


111°7'W 111°5'W 111°3'W 111°1'W 110°59'W 110°57'W 110°55'W 110°53'W 110°51'W 110°49'W 110°47'W 110°45'W 110°43'W 110°41'W 110°39'W 110°37'W 110°35'W 110°33'W 110°31'W

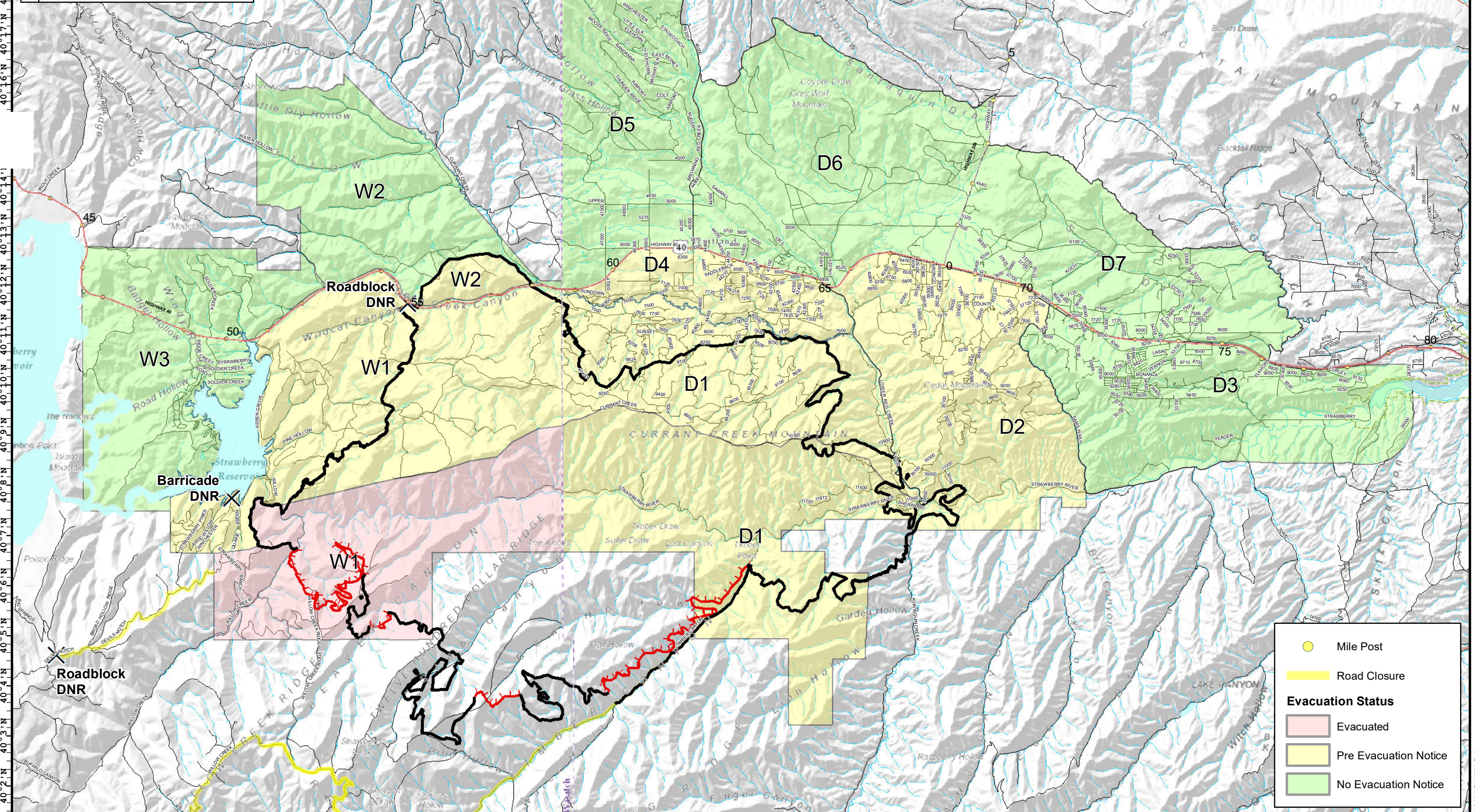
40°19'N 40°18'N 40°17'N 40°16'N 40°15'N 40°14'N 40°13'N 40°12'N 40°11'N 40°10'N 40°9'N 40°8'N 40°7'N 40°6'N 40°5'N 40°4'N 40°3'N 40°2'N



COMMUNITY

Dollar Ridge
 UT-NES-200383
 07/18/2018 day shift
 56,734 acres
 as of 07/14/2018, 2208 Hrs







Team 5

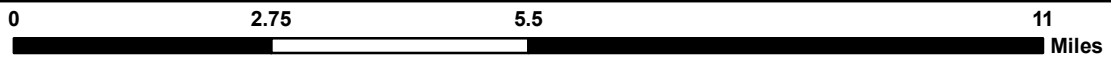


-  Mile Post
-  Road Closure

Evacuation Status

-  Evacuated
-  Pre Evacuation Notice
-  No Evacuation Notice

 **Coordinate System: NAD 1983 UTM Zone 12N**
Map Scale: 1:130,000, 1 inch = 10,833 feet



Admin
 7/17/2018, 23:51 Hrs

COMMUNITY