

110°48'W 110°47'W 110°46'W 110°45'W 110°44'W 110°43'W 110°42'W

# Dollar Ridge

UT-NES-200383  
07/18/2018 day shift  
56,734 acres  
as of 07/14/2018, 2208 Hrs



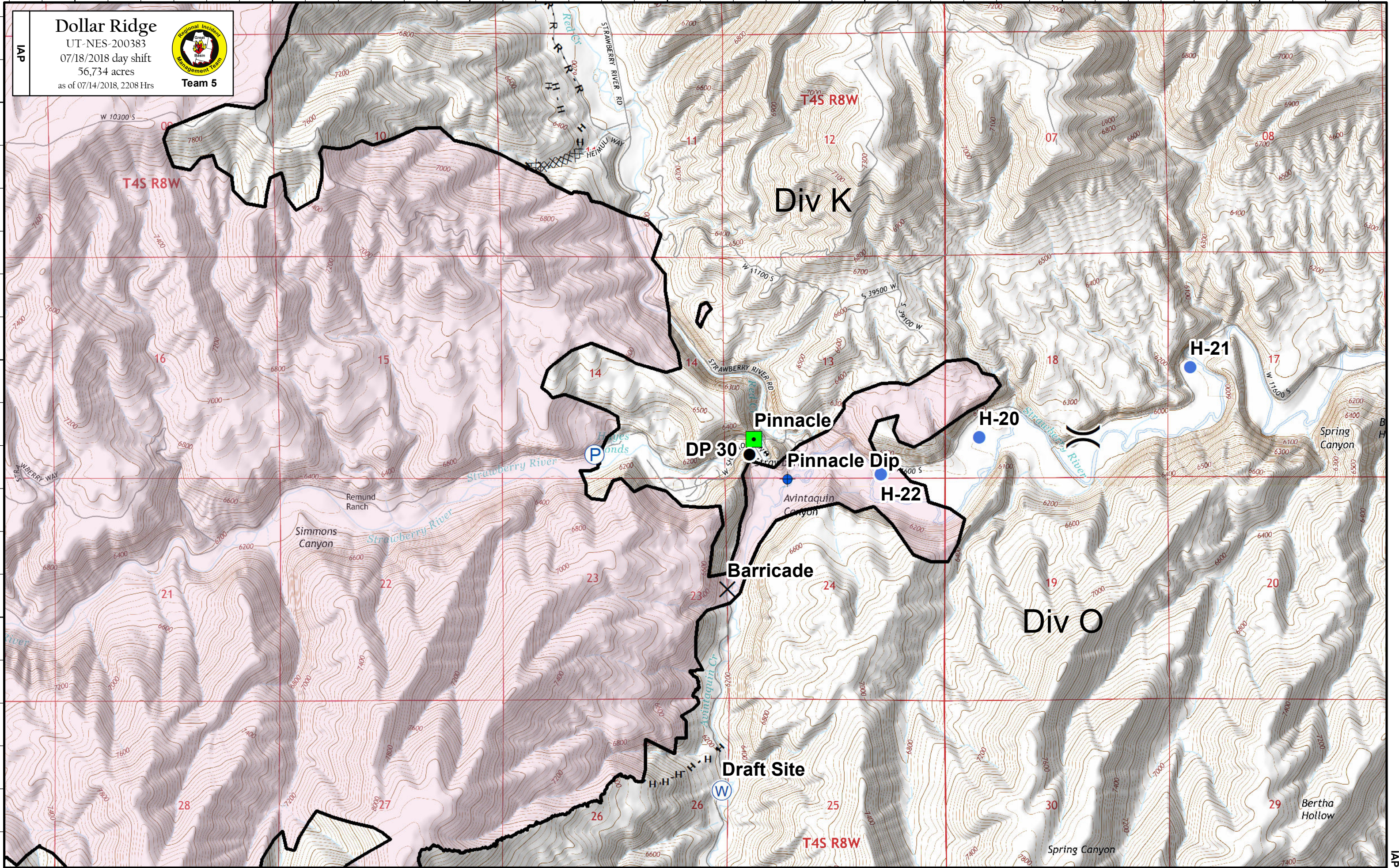
IAP

40°9'N

40°8'N

40°7'N

IAP



T4S R8W

Div K

T4S R8W

H-21

Pinnacle

H-20

DP 30

Pinnacle Dip

H-22

Barricade

Div O

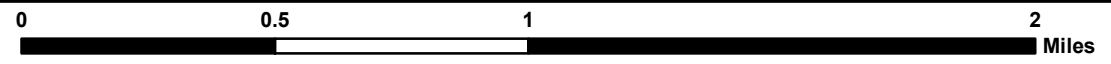
Draft Site

T4S R8W

Spring Canyon

Bertha Hollow

Coordinate System: NAD 1983 UTM Zone 12N  
Map Scale: 1:24,000, 1 inch = 2,000 feet



Admin  
7/17/2018, 22:01 Hrs