


111°7'W 111°5'W 111°3'W 111°1'W 110°59'W 110°57'W 110°55'W 110°53'W 110°51'W 110°49'W 110°47'W 110°45'W 110°43'W 110°41'W 110°39'W 110°37'W 110°35'W 110°33'W 110°31'W

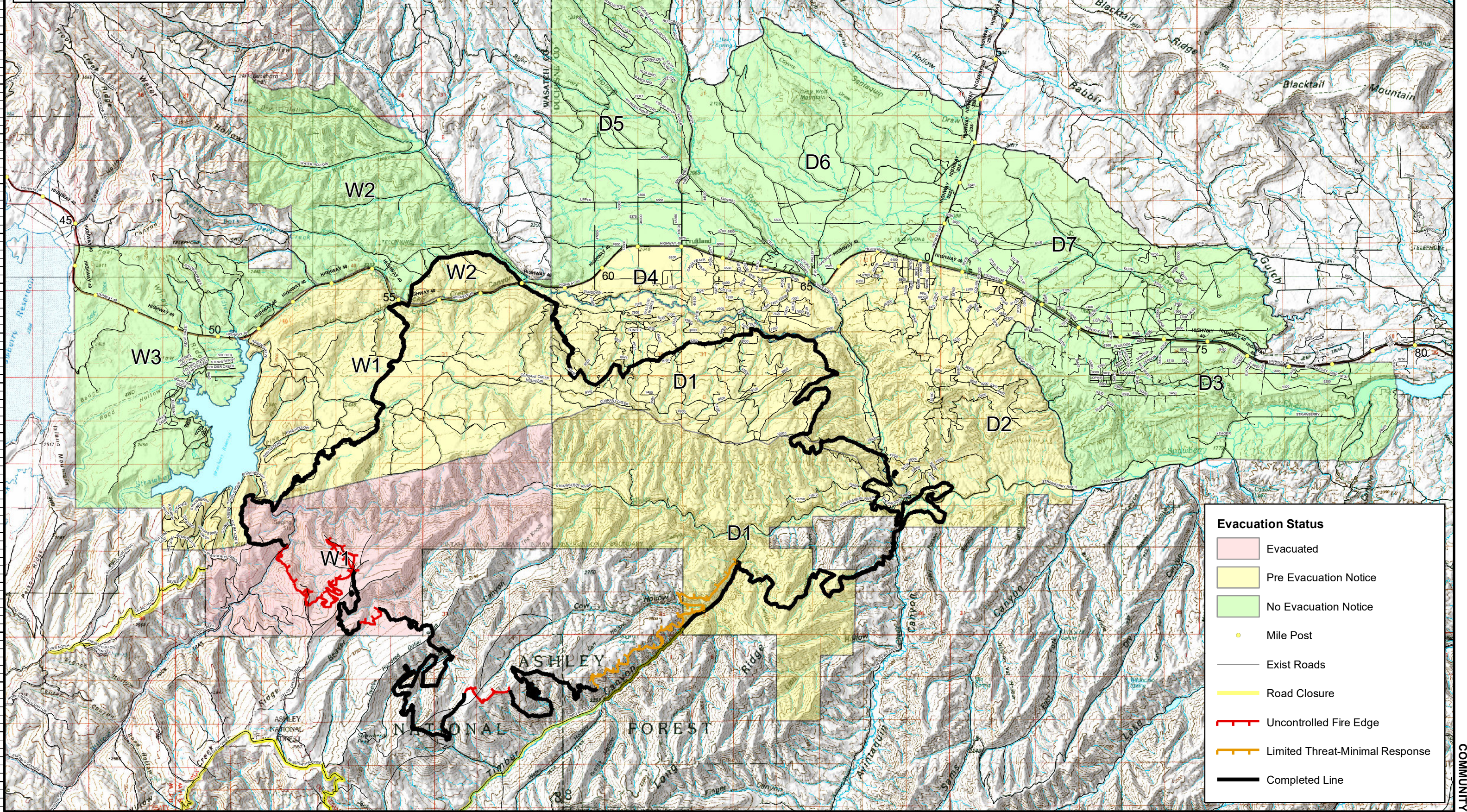
40°19'N 40°18'N 40°17'N 40°16'N 40°15'N 40°14'N 40°13'N 40°12'N 40°11'N 40°10'N 40°9'N 40°8'N 40°7'N 40°6'N 40°5'N 40°4'N 40°3'N 40°2'N

**COMMUNITY**

**Dollar Ridge**  
 UT-NES-200383  
 07/19/2018 day shift  
 56,747 acres  
 as of 07/18/2018, 0226 Hrs



**Team 5**



**Evacuation Status**

- Evacuated
- Pre Evacuation Notice
- No Evacuation Notice
- Mile Post
- Exist Roads
- Road Closure
- Uncontrolled Fire Edge
- Limited Threat-Minimal Response
- Completed Line

**Coordinate System:** NAD 1983 UTM Zone 12N  
**Map Scale:** 1:130,000, 1 inch = 10,833 feet

