
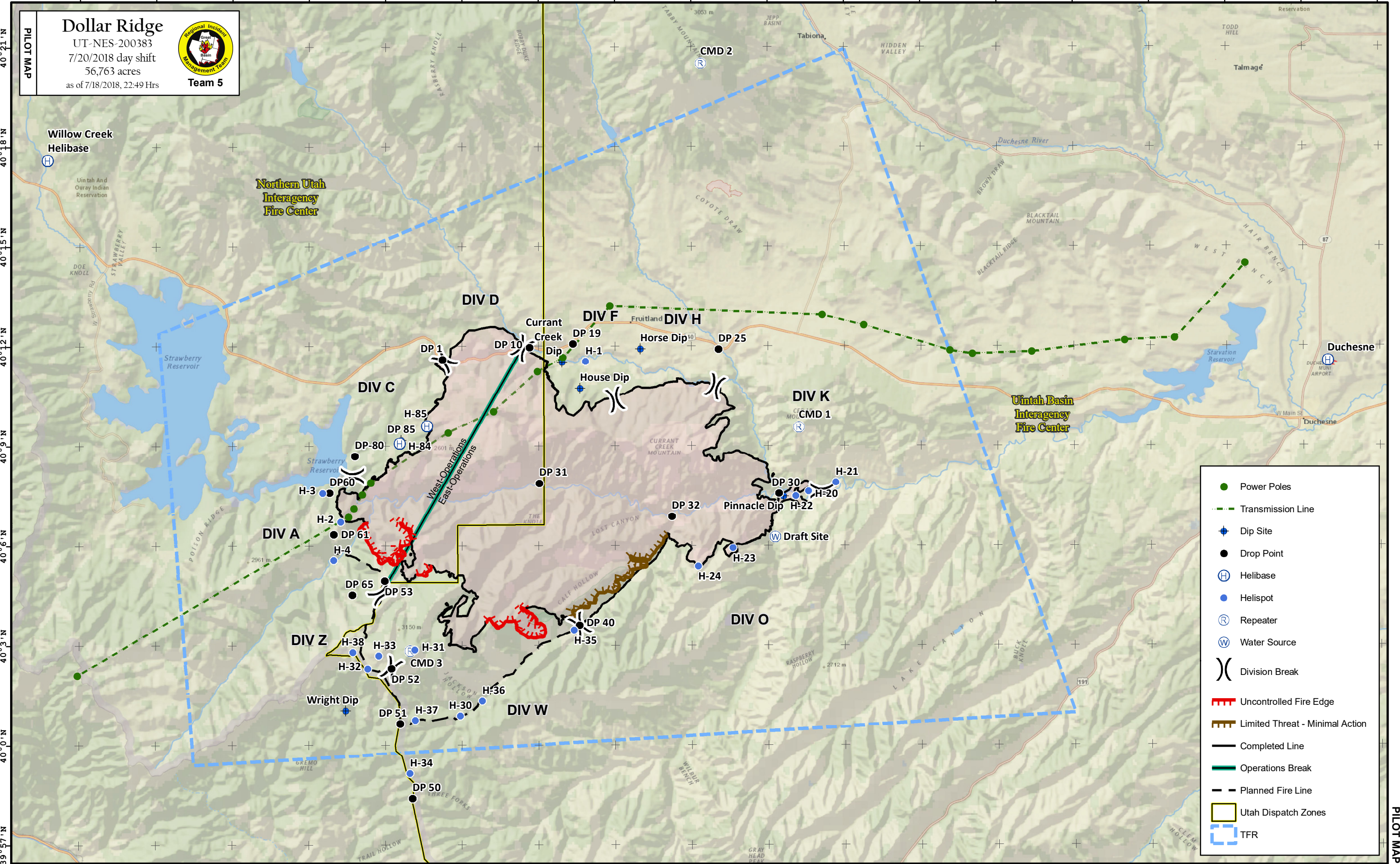


PILLOT MAP

Dollar Ridge
 UT-NES-200383
 7/20/2018 day shift
 56,763 acres
 as of 7/18/2018, 22:49 Hrs



Team 5



- Power Poles
- Transmission Line
- Dip Site
- Drop Point
- Helibase
- Helispot
- Repeater
- Water Source
- Division Break
- Uncontrolled Fire Edge
- Limited Threat - Minimal Action
- Completed Line
- Operations Break
- Planned Fire Line
- Utah Dispatch Zones
- TFR

| FeatureCategory | Label | LatWGS84_DDM | LongWGS84_DDM |
|------------------------|-------------------|---------------------|----------------------|
| Camp | Three Forks Spike | 39° 58.805' N | 110° 58.811' W |
| Dip Site | Currant Creek Dip | 40° 11.570' N | 110° 53.080' W |
| Dip Site | House Dip | 40° 10.780' N | 110° 52.370' W |
| Dip Site | Horse Dip | 40° 11.960' N | 110° 50.010' W |
| Dip Site | Pinnacle Dip | 40° 7.530' N | 110° 44.400' W |
| Dip Site | DP 85 | 40° 9.220' N | 110° 59.382' W |
| Dip Site | Wright Dip | 40° 1.070' N | 111° 1.550' W |
| Drop Point | DP 31 | 40° 7.932' N | 110° 53.971' W |
| Drop Point | DP 32 | 40° 6.935' N | 110° 48.788' W |
| Drop Point | DP 10 | 40° 12.009' N | 110° 54.352' W |
| Drop Point | DP 1 | 40° 11.651' N | 110° 57.764' W |
| Drop Point | DP 19 | 40° 12.117' N | 110° 52.658' W |
| Drop Point | DP 25 | 40° 11.962' N | 110° 46.952' W |
| Drop Point | DP 30 | 40° 7.625' N | 110° 44.592' W |
| Drop Point | DP 65 | 40° 4.570' N | 111° 1.301' W |
| Drop Point | DP60 | 40° 7.637' N | 111° 2.193' W |
| Drop Point | DP-80 | 40° 8.738' N | 111° 1.200' W |
| Drop Point | DP 51 | 40° 0.690' N | 110° 59.427' W |
| Drop Point | DP 50 | 39° 58.451' N | 110° 58.938' W |
| Drop Point | DP 52 | 40° 2.349' N | 110° 59.771' W |
| Drop Point | DP 53 | 40° 4.982' N | 111° 0.033' W |
| Drop Point | DP 40 | 40° 3.657' N | 110° 52.408' W |
| Drop Point | DP 61 | 40° 6.388' N | 111° 2.023' W |
| Helibase | Duchesne | 40° 11.571' N | 110° 23.053' W |
| Helibase | H-85 | 40° 9.649' N | 110° 58.375' W |
| Helibase | H-84 | 40° 9.128' N | 110° 59.443' W |
| Helispot | H-23 | 40° 5.990' N | 110° 46.390' W |
| Helispot | H-2 | 40° 6.766' N | 111° 1.757' W |
| Helispot | H-30 | 40° 0.930' N | 110° 57.070' W |
| Helispot | H-31 | 40° 2.920' N | 110° 58.850' W |
| Helispot | H-32 | 40° 2.340' N | 111° 0.690' W |
| Helispot | H-33 | 40° 2.740' N | 111° 0.260' W |
| Helispot | H-3 | 40° 7.630' N | 111° 2.460' W |
| Helispot | H-24 | 40° 5.440' N | 110° 47.750' W |
| Helispot | H-4 | 40° 5.610' N | 111° 2.030' W |
| Helispot | H-35 | 40° 3.520' N | 110° 52.610' W |
| Helispot | H-37 | 40° 0.790' N | 110° 58.830' W |
| Helispot | H-36 | 40° 1.380' N | 110° 56.210' W |
| Helispot | H-38 | 40° 2.840' N | 111° 1.280' W |
| Helispot | H-34 | 39° 59.200' N | 110° 59.040' W |
| Incident Command Post | ICP | 40° 9.494' N | 110° 24.061' W |
| Repeater | CMD 2 | 40° 20.561' N | 110° 47.628' W |
| Repeater | CMD 1 | 40° 9.619' N | 110° 43.798' W |
| Repeater | CMD 3 | 40° 2.888' N | 110° 59.025' W |
| Water Source | Draft Site | 40° 6.321' N | 110° 44.735' W |