


111°22'W 111°20'W 111°18'W 111°16'W 111°14'W 111°12'W 111°10'W 111°8'W 111°6'W 111°4'W 111°2'W 111°0'W 110°58'W 110°56'W 110°54'W 110°52'W 110°50'W 110°48'W 110°46'W 110°44'W 110°42'W 110°40'W 110°38'W 110°36'W 110°34'W 110°32'W 110°30'W 110°28'W 110°26'W 110°24'W 110°22'W

40°22'N 40°20'N 40°18'N 40°16'N 40°14'N 40°12'N 40°10'N 40°8'N 40°6'N 40°4'N 40°2'N 40°0'N 39°58'N 39°56'N 39°54'N 39°52'N 39°50'N 39°48'N

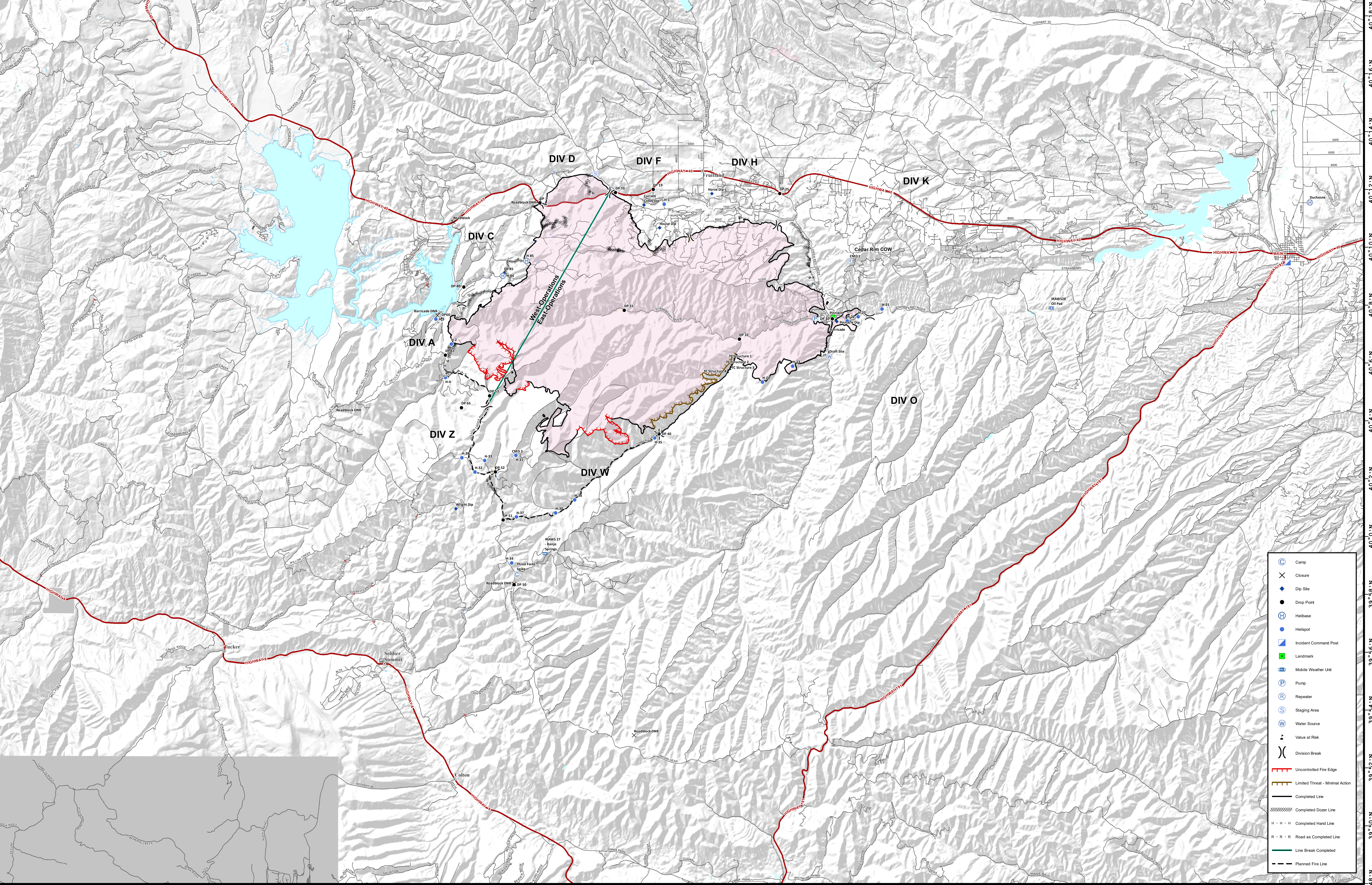
**TRANSPORTATION**

# Dollar Ridge

UT-NES-200383  
07/20/2018 day shift  
56,763 acres  
as of 07/18/2018, 2249 Hrs



**Team 5**



	Camp
	Close
	Drop Site
	Drop Point
	Helibase
	Helispot
	Incident Command Post
	Landmark
	Mobile Weather Unit
	Pump
	Repeater
	Staging Area
	Water Source
	Value at Risk
	Division Break
	Uncontrolled Fire Edge
	Limited Threat - Minimal Action
	Completed Line
	Completed Dozer Line
	Completed Hand Line
	Road as Completed Line
	Line Break Completed
	Planned Fire Line

**NORTH**  
Coordinate System: NAD 1983 UTM Zone 12N  
Map Scale: 1:75,000, 1 inch = 6,250 feet

0 1.5 3 6 Miles

TRANSPORTATION