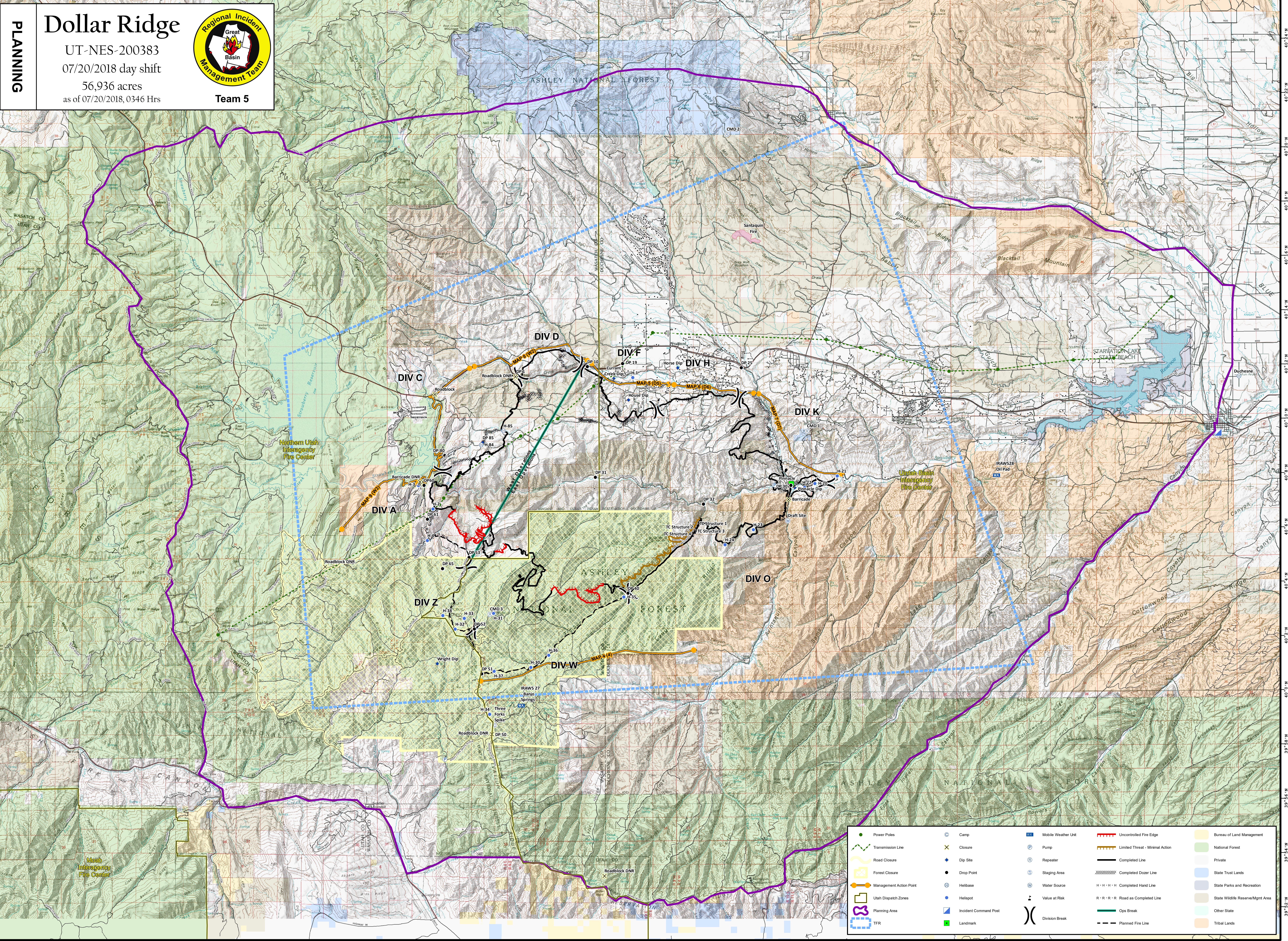


111°22'W 111°20'W 111°18'W 111°16'W 111°14'W 111°12'W 111°10'W 111°8'W 111°6'W 111°4'W 111°2'W 111°0'W 110°58'W 110°56'W 110°54'W 110°52'W 110°50'W 110°48'W 110°46'W 110°44'W 110°42'W 110°40'W 110°38'W 110°36'W 110°34'W 110°32'W 110°30'W 110°28'W 110°26'W 110°24'W 110°22'W

PLANNING

Dollar Ridge

UT-NES-200383
07/20/2018 day shift
56,936 acres
as of 07/20/2018, 0346 Hrs



Coordinate System: NAD 1983 UTM Zone 12N
Map Scale: 1:75,000, 1 inch = 6,250 feet

0 1.5 3 6 Miles

Power Poles	Camp	Mobile Weather Unit	Uncontrolled Fire Edge	Bureau of Land Management
Transmission Line	Closure	Pump	Limited Threat - Minimal Action	National Forest
Road Closure	Dip Site	Repeater	Completed Line	Private
Forest Closure	Drop Point	Staging Area	Completed Dozer Line	State Trust Lands
Management Action Point	Helibase	Water Source	H-H-H-H Completed Hand Line	State Parks and Recreation
Utah Dispatch Zones	Helipod	Value at Risk	R-R-R-R Road as Completed Line	State Wildlife Reserve/Mgmt Area
Planning Area	Incident Command Post	Division Break	Ops Break	Other State
TFR	Landmark		Planned Fire Line	Tribal Lands

PLANNING