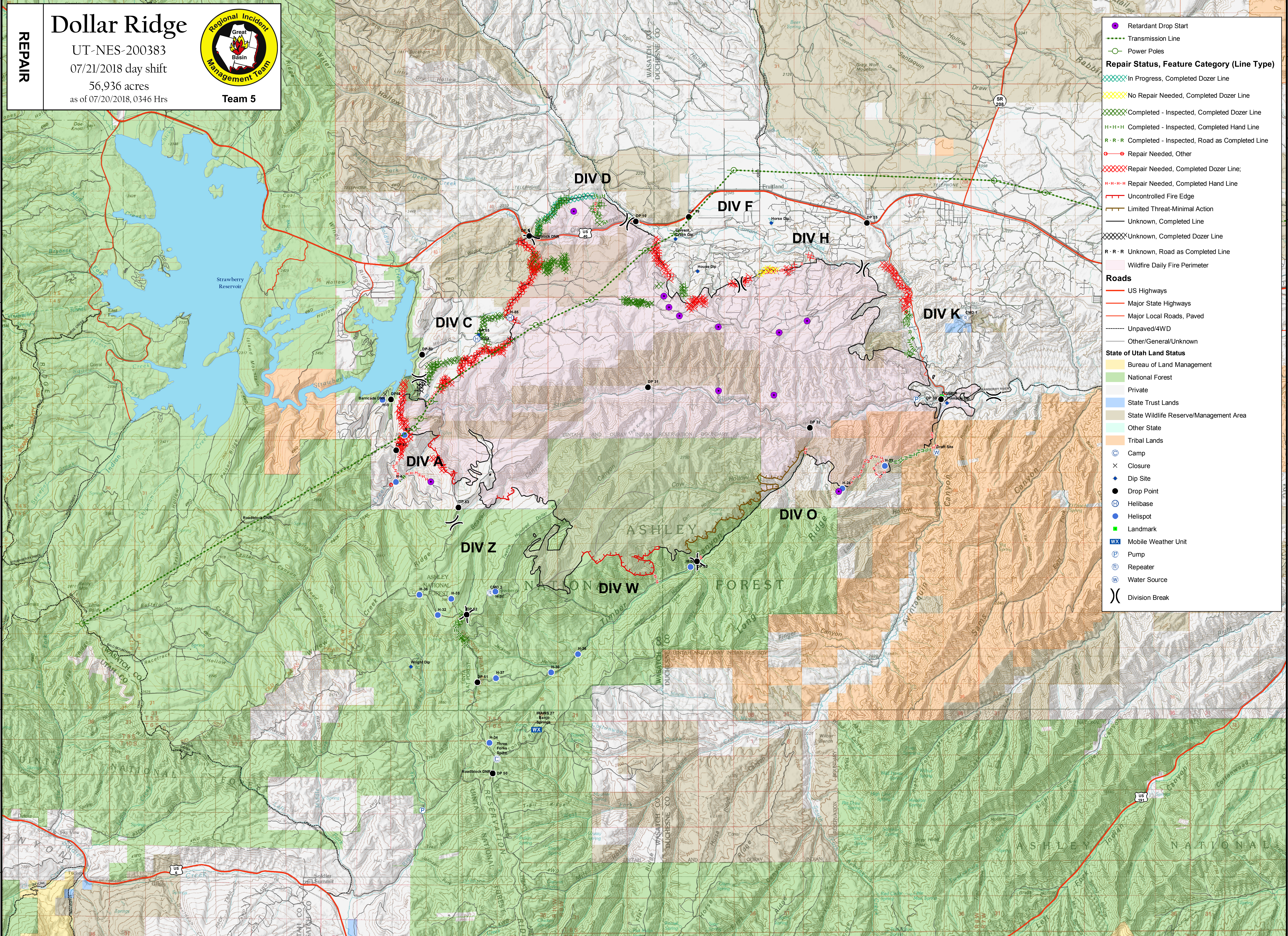



111°14'W 111°12'W 111°10'W 111°8'W 111°6'W 111°4'W 111°2'W 111°0'W 110°58'W 110°56'W 110°54'W 110°52'W 110°50'W 110°48'W 110°46'W 110°44'W 110°42'W 110°40'W 110°38'W 110°36'W 110°34'W



REPAIR

Dollar Ridge

UT-NES-200383
07/21/2018 day shift
56,936 acres
as of 07/20/2018, 0346 Hrs



Team 5

Repair Status, Feature Category (Line Type)

- Retardant Drop Start
- Transmission Line
- Power Poles
- ▨ In Progress, Completed Dozer Line
- ▨ No Repair Needed, Completed Dozer Line
- ▨ Completed - Inspected, Completed Dozer Line
- H-H-H Completed - Inspected, Completed Hand Line
- R-R-R Completed - Inspected, Road as Completed Line
- Repair Needed, Other
- ▨ Repair Needed, Completed Dozer Line;
- H-H-H Repair Needed, Completed Hand Line
- Uncontrolled Fire Edge
- Limited Threat-Minimal Action
- Unknown, Completed Line
- ▨ Unknown, Completed Dozer Line
- R-R-R Unknown, Road as Completed Line

Roads

- US Highways
- Major State Highways
- Major Local Roads, Paved
- Unpaved/4WD
- Other/General/Unknown

State of Utah Land Status

- Bureau of Land Management
- National Forest
- Private
- State Trust Lands
- State Wildlife Reserve/Management Area
- Other State
- Tribal Lands

Other Symbols

- ⊙ Camp
- ⊗ Closure
- ⊕ Dip Site
- Drop Point
- ⊕ Helibase
- Helispot
- Landmark
- WX Mobile Weather Unit
- ⊕ Pump
- ⊕ Repeater
- ⊕ Water Source
-) Division Break

Coordinate System: NAD 1983 UTM Zone 12N
Map Scale: 1:50,000, 1 inch = 4,167 feet

0 1 2 4 Miles

7/20/2018 2:07 PM
REPAIR