


111°22'W 111°20'W 111°18'W 111°16'W 111°14'W 111°12'W 111°10'W 111°8'W 111°6'W 111°4'W 111°2'W 111°0'W 110°58'W 110°56'W 110°54'W 110°52'W 110°50'W 110°48'W 110°46'W 110°44'W 110°42'W 110°40'W 110°38'W 110°36'W 110°34'W 110°32'W 110°30'W 110°28'W 110°26'W 110°24'W 110°22'W

40°22'N 40°20'N 40°18'N 40°16'N 40°14'N 40°12'N 40°10'N 40°8'N 40°6'N 40°4'N 40°2'N 40°0'N 39°58'N 39°56'N 39°54'N 39°52'N 39°50'N 39°48'N

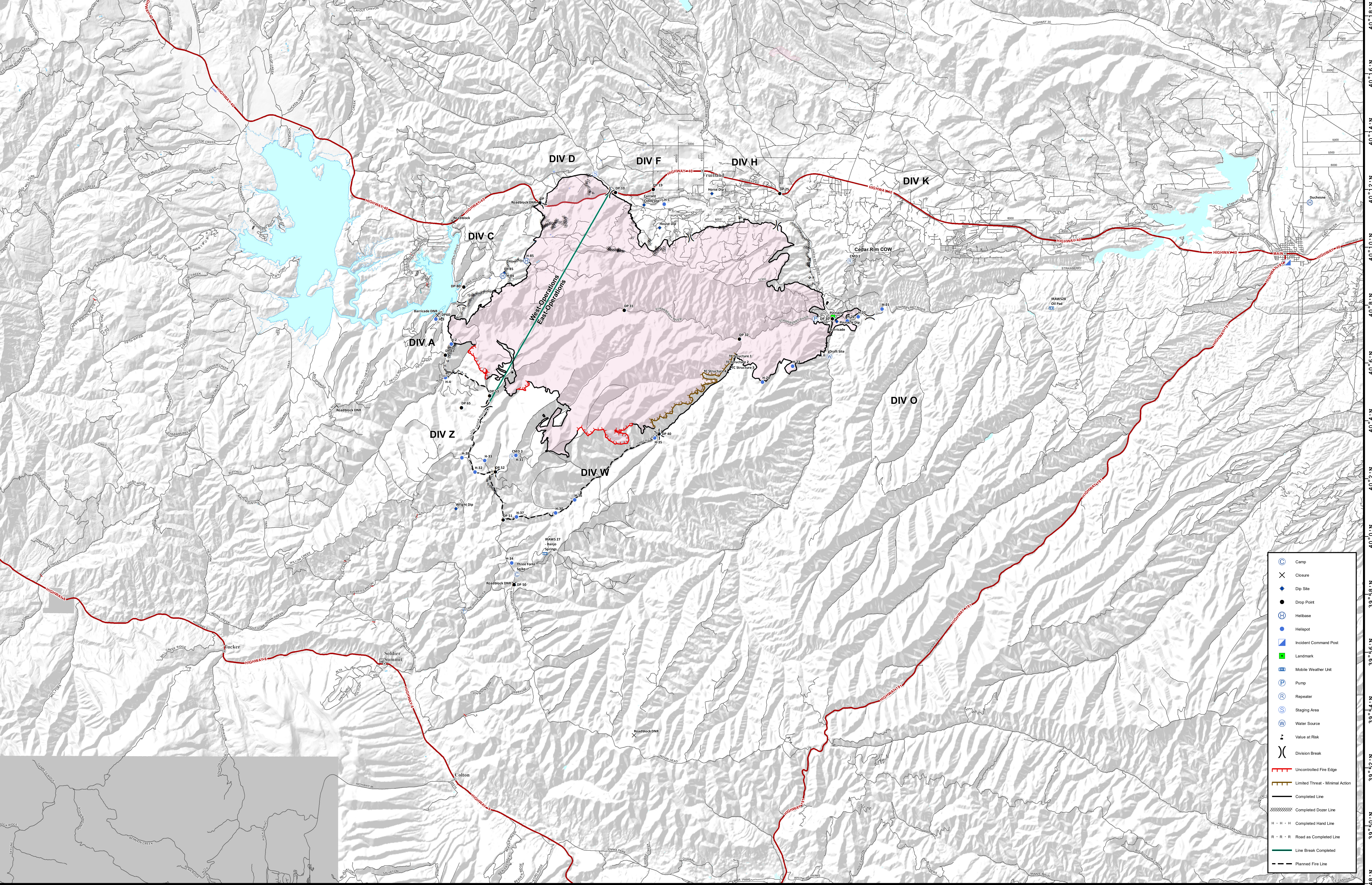
**TRANSPORTATION**

# Dollar Ridge

UT-NES-200383  
07/21/2018 day shift  
56,936 acres  
as of 07/20/2018, 0346 Hrs



**Team 5**



**Coordinate System:** NAD 1983 UTM Zone 12N  
**Map Scale:** 1:75,000, 1 inch = 6,250 feet

0 1.5 3 6 Miles

TRANSPORTATION