

110°56'W

110°55'W

110°54'W

110°53'W

110°52'W

110°51'W

Northern Utah Interagency Fire Center  
Utah Basin Interagency Fire Center

ASHLEY NATIONAL FOREST

ASHLEY NATIONAL FOREST

The Knolls

Bull Hollow

Cow Hollow

Calf Hollow

Sagers Spring

Calf Hollow

Cow Hollow

Div O

DP:40

T4S R9W

T4S R9W

WASATCH CO  
DUCHESSNE CO

IAP

# Dollar Ridge

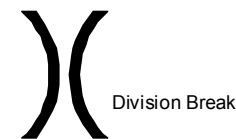
UT-NES-200383  
07/23/2018 day shift  
57,051 acres  
as of 07/22/2018, 0329 Hrs



Team 5

● Drop Point

● Helispot



Division Break

Uncontrolled Fire Edge

Limited Threat-Minimal Action

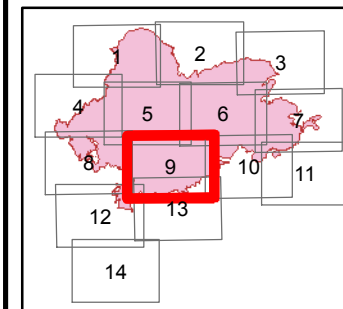
Completed Line

H - H Completed Hand Line

R - R Road as Completed Line

Planned Fire Line

Wildfire Daily Fire Perimeter



IAP Maps Page 9 of 14

Coordinate System: NAD 1983 UTM Zone 12N  
Map Scale: 1:24,000, 1 inch = 2,000 feet

0 0.5 1 2 Miles

admin  
7/22/2018, 20:19 Hrs