

PROGRESSION

Dollar Ridge

UT-NES-200383

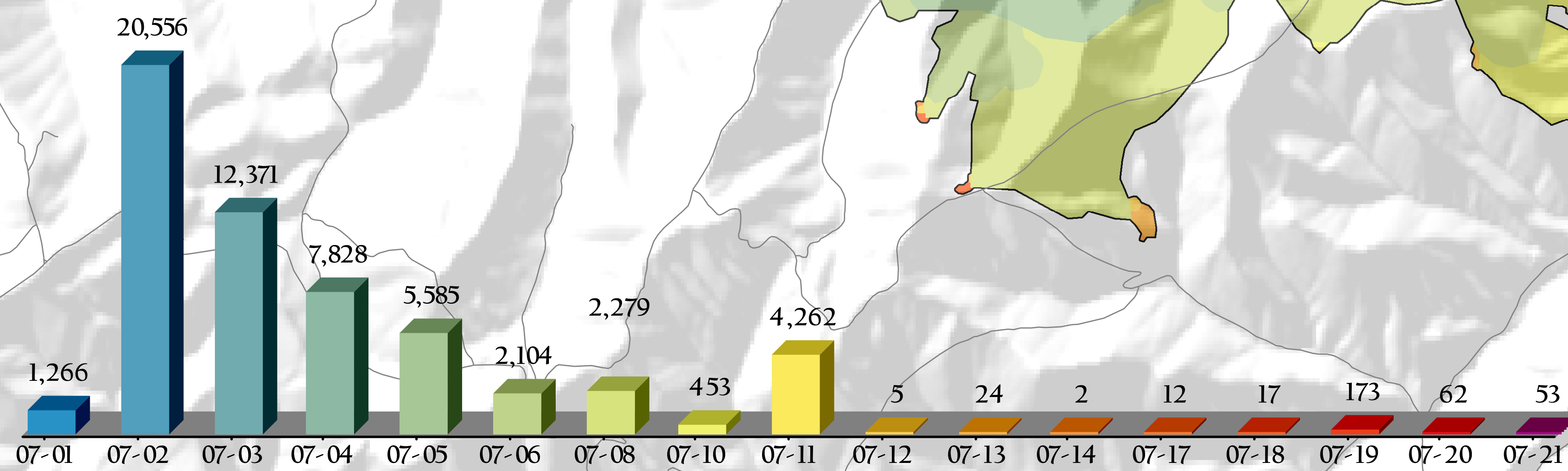
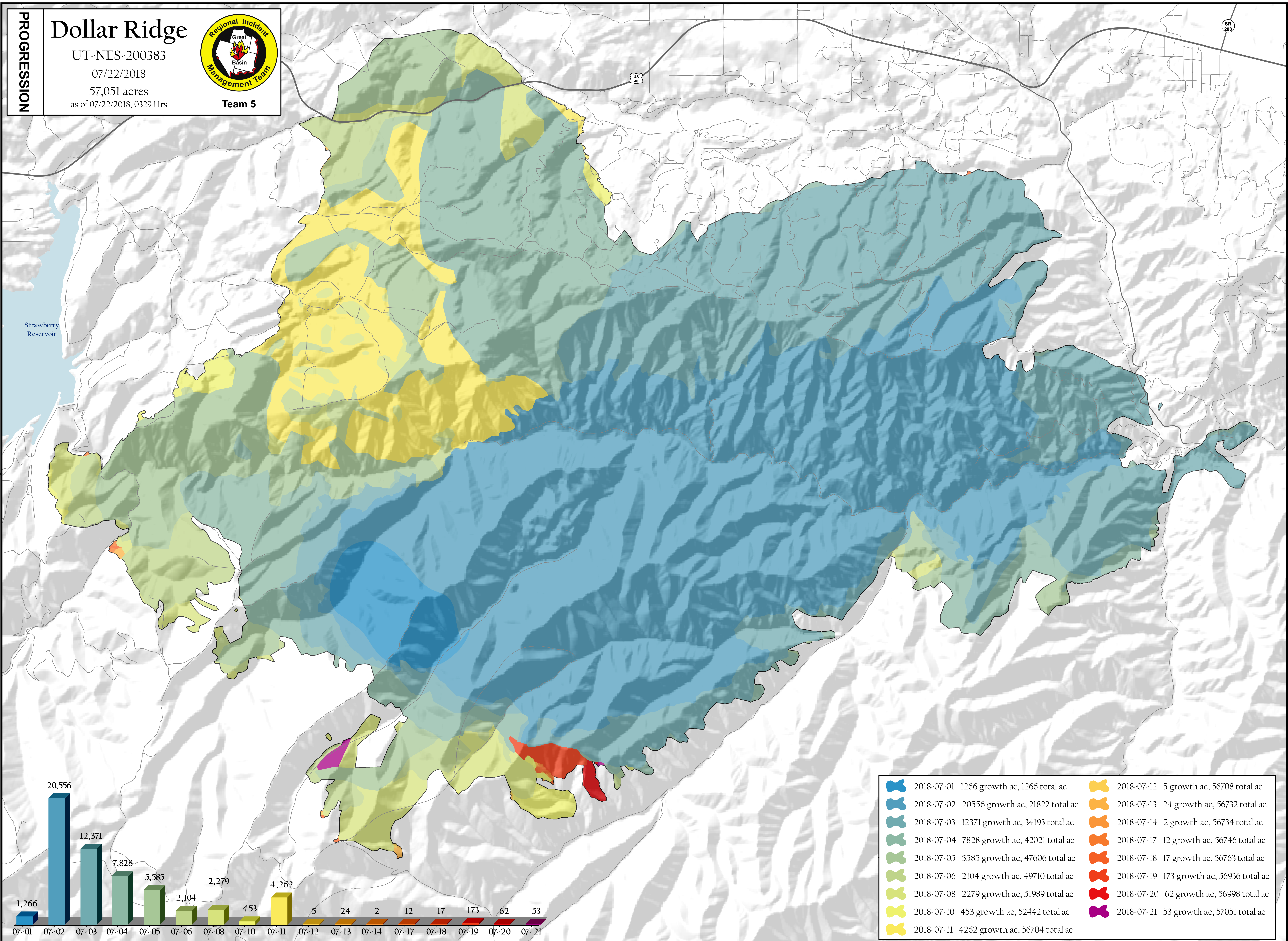
07/22/2018

57,051 acres
as of 07/22/2018, 0329 Hrs



Team 5

Strawberry Reservoir



	2018-07-01	1266 growth ac, 1266 total ac		2018-07-12	5 growth ac, 56708 total ac
	2018-07-02	20556 growth ac, 21822 total ac		2018-07-13	24 growth ac, 56732 total ac
	2018-07-03	12371 growth ac, 34193 total ac		2018-07-14	2 growth ac, 56734 total ac
	2018-07-04	7828 growth ac, 42021 total ac		2018-07-17	12 growth ac, 56746 total ac
	2018-07-05	5585 growth ac, 47606 total ac		2018-07-18	17 growth ac, 56763 total ac
	2018-07-06	2104 growth ac, 49710 total ac		2018-07-19	173 growth ac, 56936 total ac
	2018-07-08	2279 growth ac, 51989 total ac		2018-07-20	62 growth ac, 56998 total ac
	2018-07-10	453 growth ac, 52442 total ac		2018-07-21	53 growth ac, 57051 total ac
	2018-07-11	4262 growth ac, 56704 total ac			

Coordinate System: NAD 1983 UTM Zone 12N
Map Scale: 1:24,000, 1 inch = 2,000 feet



7/22/2018, 17:26 Hrs
PROGRESSION