
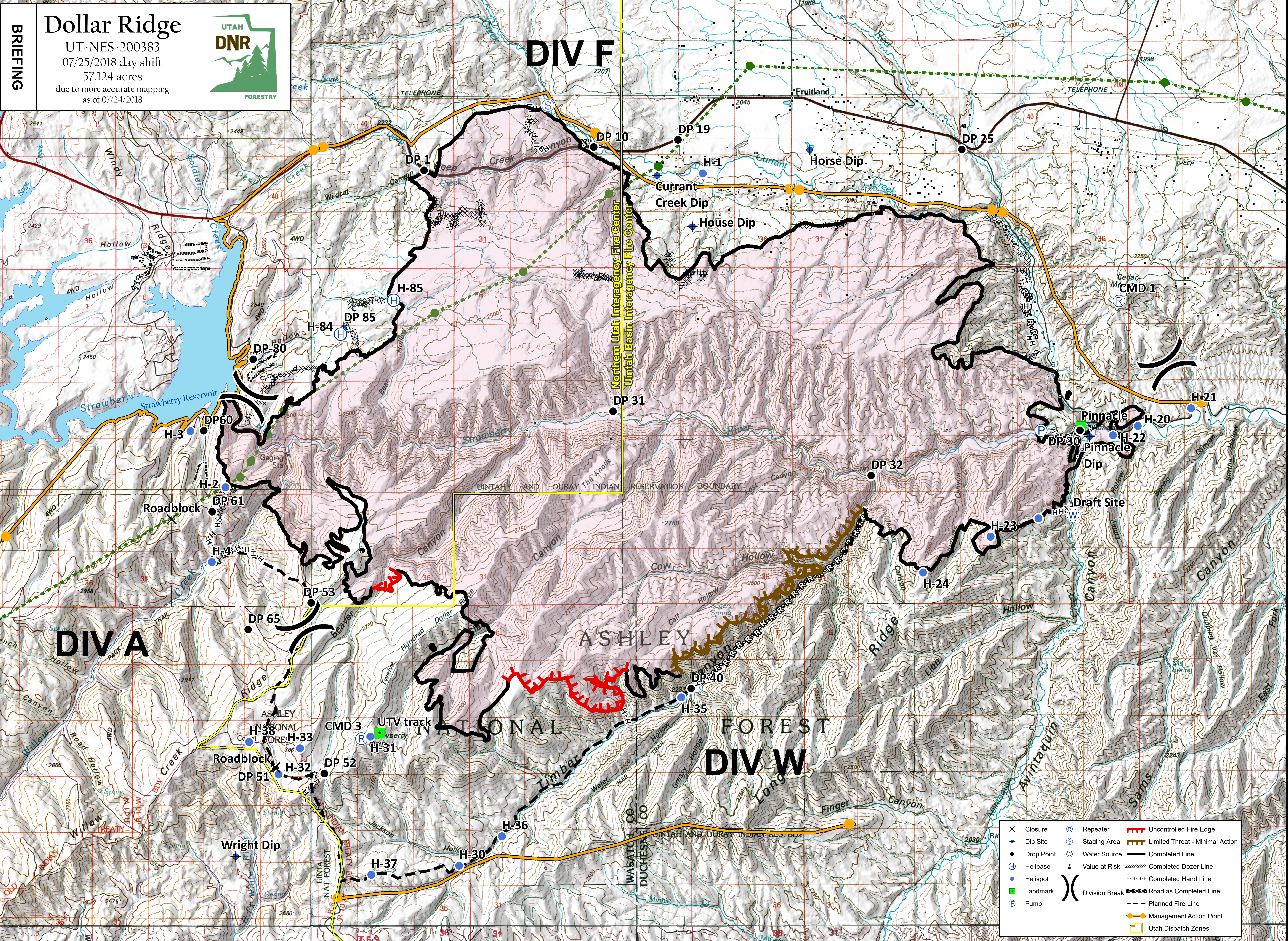


111°6'W 111°4'W 111°2'W 111°0'W 110°58'W 110°56'W 110°54'W 110°52'W 110°50'W 110°48'W 110°46'W 110°44'W 110°42'W

**BRIEFING**

# Dollar Ridge

UT-NES-200383  
07/25/2018 day shift  
57,124 acres  
due to more accurate mapping  
as of 07/24/2018

# DIVA

# DIV F

# DIV W

✕	Closure	Ⓡ	Repeater	🔴	Uncontrolled Fire Edge
⬇	Dip Site	Ⓢ	Staging Area	🟡	Limited Threat - Minimal Action
●	Drop Point	🌊	Water Source	—	Completed Line
Ⓜ	Helibase	⚠	Value at Risk	⊘	Completed Dozer Line
Ⓜ	Helispot	⚠	Value at Risk	⊘	Completed Hand Line
📍	Landmark	⚠	Value at Risk	⊘	Road as Completed Line
Ⓜ	Pump	⚠	Value at Risk	⊘	Planned Fire Line
Ⓜ	Management Action Point	⚠	Value at Risk	⊘	Utah Dispatch Zones

Coordinate System: NAD 1983 UTM Zone 12N  
Map Scale: 1:31,985, 1 inch = 2,632 feet

