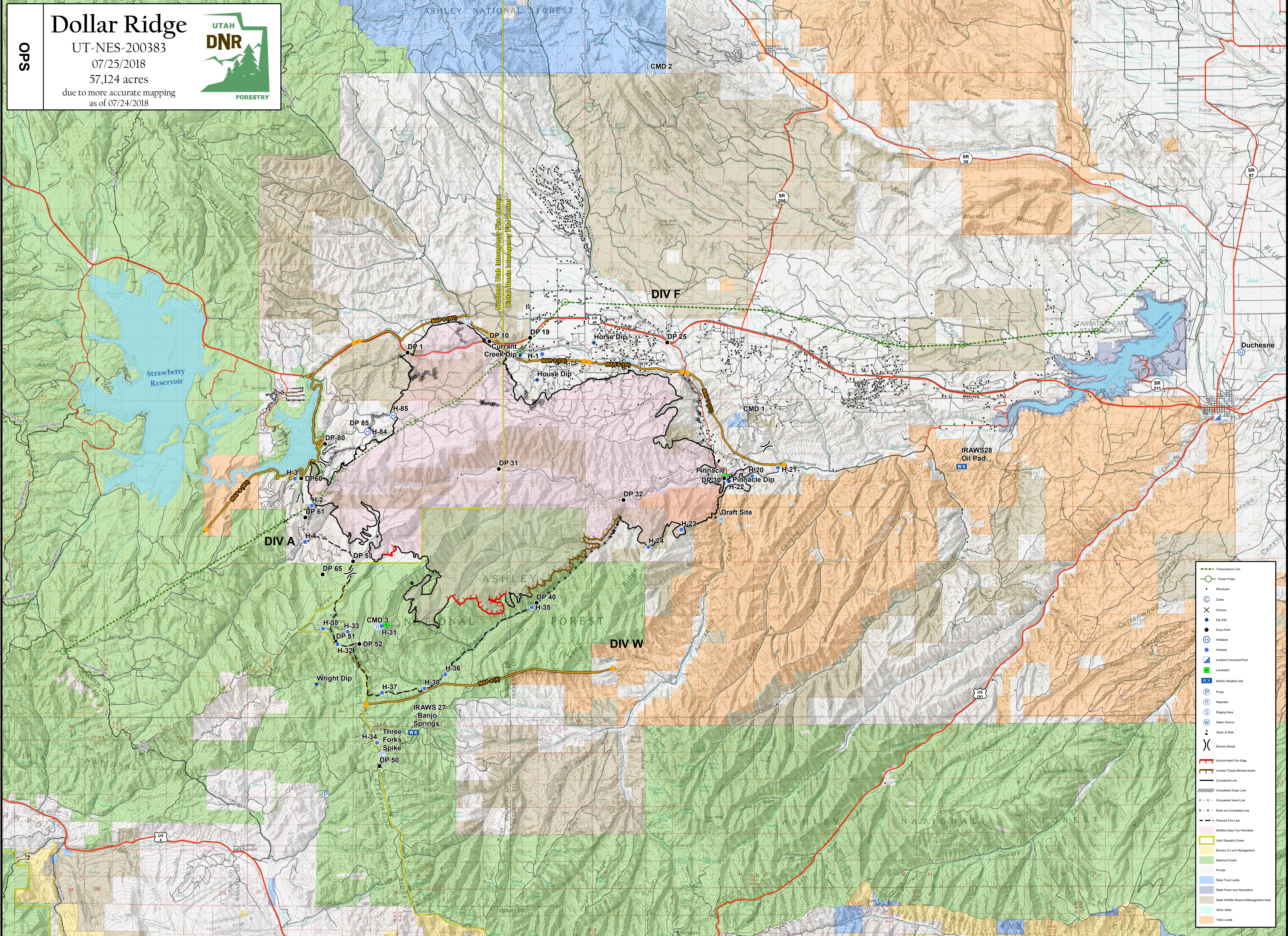


111°44'W 111°42'W 111°40'W 111°38'W 111°36'W 111°34'W 111°32'W 111°30'W 111°28'W 111°26'W 111°24'W 111°22'W 111°20'W 111°18'W 111°16'W 111°14'W 111°12'W 111°10'W 111°8'W 111°6'W 111°4'W 111°2'W 111°0'W 110°58'W 110°56'W 110°54'W 110°52'W 110°50'W 110°48'W 110°46'W 110°44'W 110°42'W 110°40'W 110°38'W 110°36'W 110°34'W 110°32'W 110°30'W 110°28'W 110°26'W 110°24'W 110°22'W

OPS

Dollar Ridge

UT-NES-200383
07/25/2018
57,124 acres
due to more accurate mapping
as of 07/24/2018



- Transmission Line
- Power Poles
- Structures
- Camp
- Close
- Dip Site
- Drop Point
- Helibase
- Helispot
- Incident Command Post
- Landmark
- Mobile Weather Unit
- Pump
- Repeater
- Staging Area
- Water Source
- Value at Risk
- Division Break
- Uncontrolled Fire Edge
- Limited Threat-Minimal Action
- Completed Line
- Completed Outer Line
- H - H - Completed Hand Line
- R - R - Road as Completed Line
- Planned Fire Line
- Wildfire Daily Fire Perimeter
- Utah Dispatch Zones
- Bureau of Land Management
- National Forest
- Private
- State Trust Lands
- State Parks and Recreation
- State Wildlife Reserve/Management Area
- Other State
- Tribal Lands

Coordinate System: NAD 1983 UTM Zone 12N
Map Scale: 1:65,000, 1 inch = 5,417 feet

