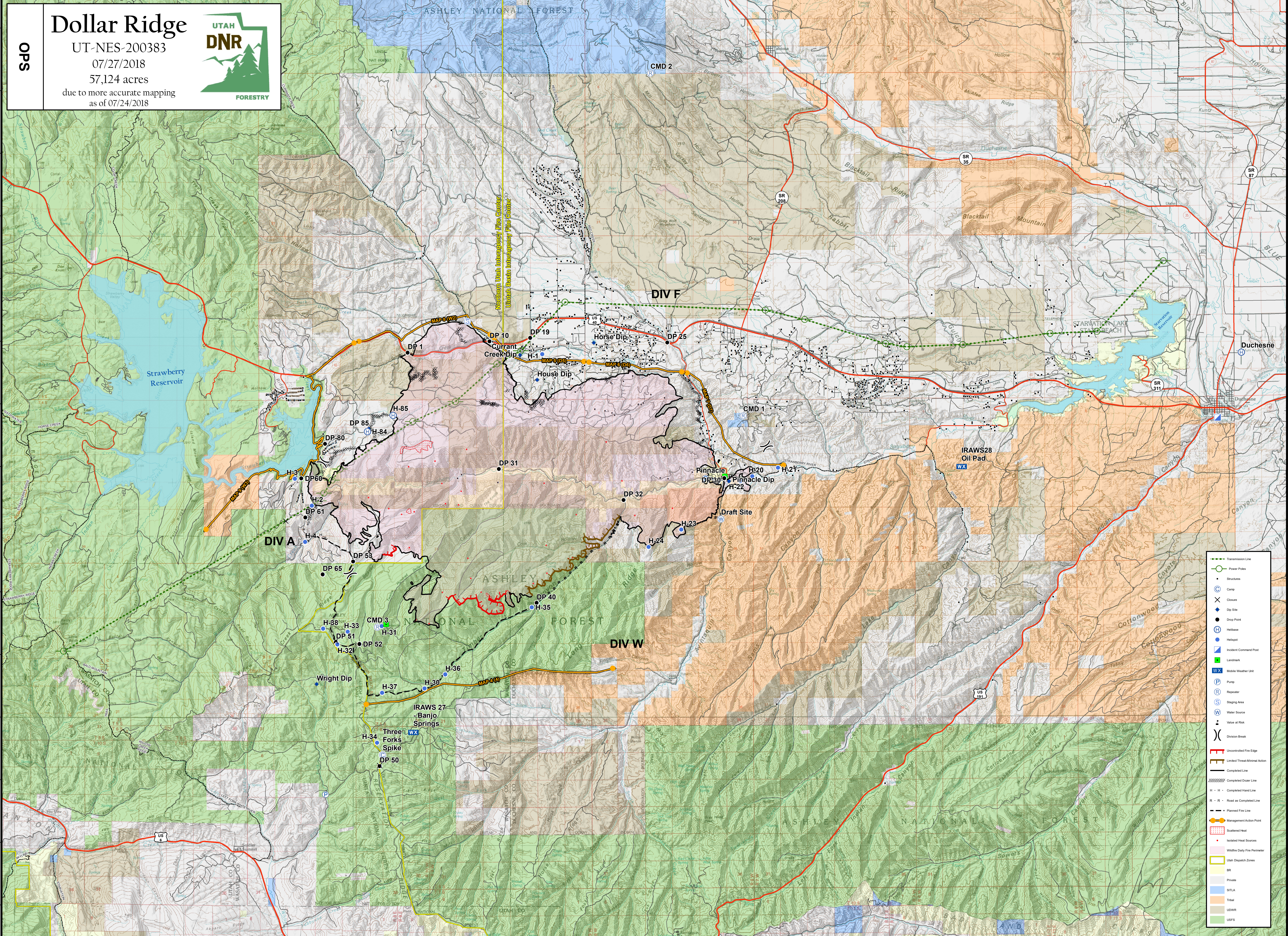


111°24'W 111°22'W 111°20'W 111°18'W 111°16'W 111°14'W 111°12'W 111°10'W 111°8'W 111°6'W 111°4'W 111°2'W 111°0'W 110°58'W 110°56'W 110°54'W 110°52'W 110°50'W 110°48'W 110°46'W 110°44'W 110°42'W 110°40'W 110°38'W 110°36'W 110°34'W 110°32'W 110°30'W 110°28'W 110°26'W 110°24'W 110°22'W

OPS

Dollar Ridge

UT-NES-200383
07/27/2018
57,124 acres
due to more accurate mapping
as of 07/24/2018



- Transmission Line
- Power Poles
- Structures
- Camp
- Closure
- Dip Site
- Drop Post
- Helibase
- Helipad
- Incident Command Post
- Landmark
- WX Mobile Weather Unit
- Pump
- Repeater
- Staging Area
- Water Source
- Value at Risk
- Division Break
- Uncontrolled Fire Edge
- Limited Threat Minimal Action
- Completed Line
- Completed Doser Line
- H - H - Completed Hand Line
- R - R - Road as Completed Line
- Planned Fire Line
- Management Action Point
- Scattered Heat
- Isolated Heat Sources
- Wildfire Daily Fire Perimeter
- Utah Dispatch Zones
- BR
- Private
- BT/LA
- Tribal
- UDWR
- USFS

Coordinate System: NAD 1983 UTM Zone 12N
Map Scale: 1:65,000, 1 inch = 5,417 feet

