


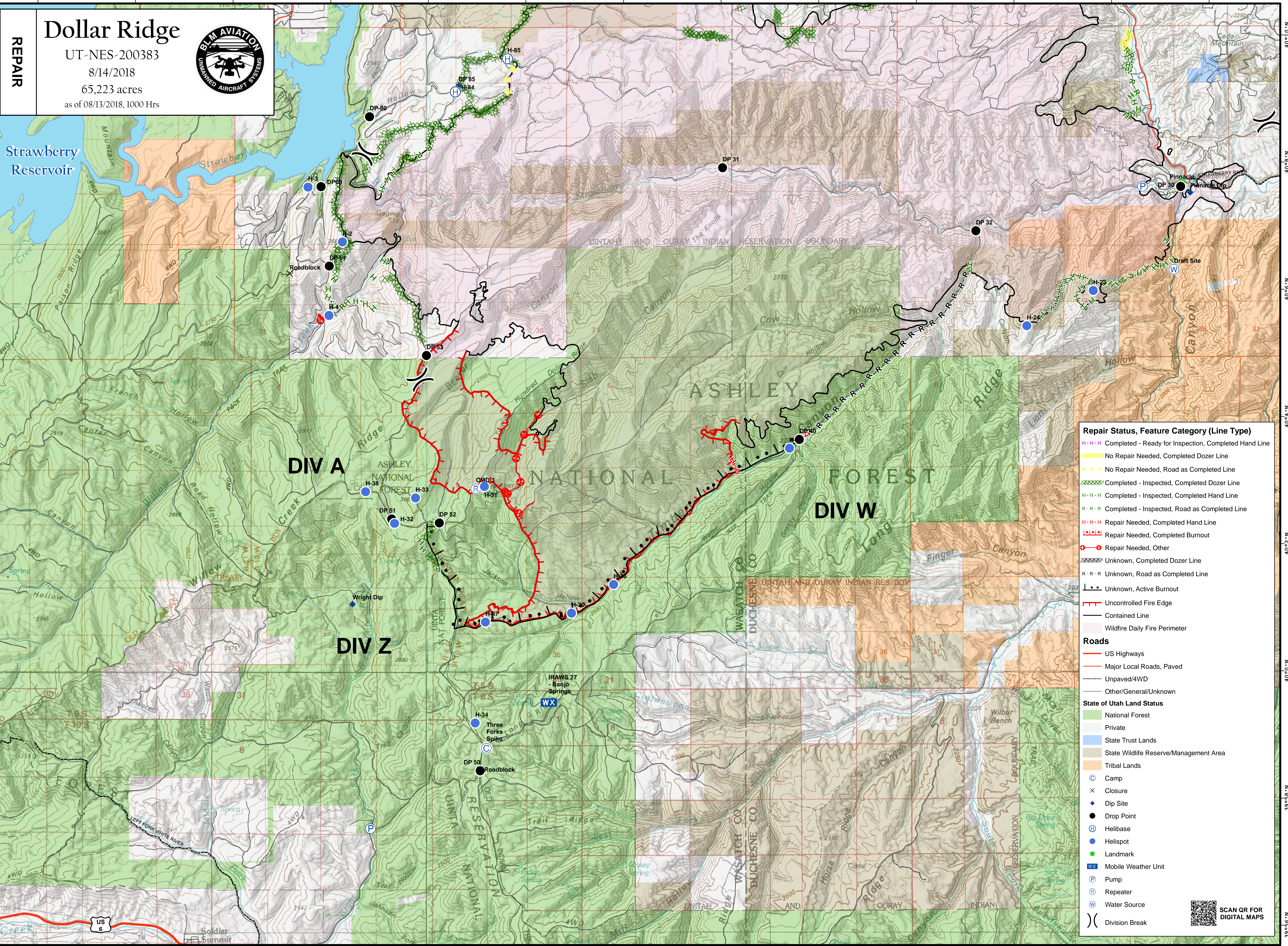
**REPAIR**

# Dollar Ridge

UT-NES-200383  
 8/14/2018  
 65,223 acres  
 as of 08/13/2018, 1000 Hrs



Strawberry Reservoir



**Repair Status, Feature Category (Line Type)**

- Completed - Ready for Inspection, Completed Hand Line
- No Repair Needed, Completed Dozer Line
- No Repair Needed, Road as Completed Line
- Completed - Inspected, Completed Dozer Line
- Completed - Inspected, Completed Hand Line
- Completed - Inspected, Road as Completed Line
- Repair Needed, Completed Hand Line
- Repair Needed, Completed Burnout
- Repair Needed, Other
- Unknown, Completed Dozer Line
- Unknown, Road as Completed Line
- Unknown, Active Burnout
- Uncontrolled Fire Edge
- Contained Line
- Wildfire Daily Fire Perimeter

**Roads**

- US Highways
- Major Local Roads, Paved
- Unpaved/4WD
- Other/General/Unknown

**State of Utah Land Status**

- National Forest
- Private
- State Trust Lands
- State Wildlife Reserve/Management Area
- Tribal Lands

**Other Symbols**

- Camp
- × Closure
- + Dip Site
- Drop Point
- Helibase
- Helispot
- Landmark
- WX Mobile Weather Unit
- P Pump
- R Repeater
- W Water Source
- ) Division Break

Coordinate System: NAD 1983 UTM Zone 12N  
 Map Scale: 1:32,000, 1 inch = 2,667 feet

0 0.5 1 2 Miles

