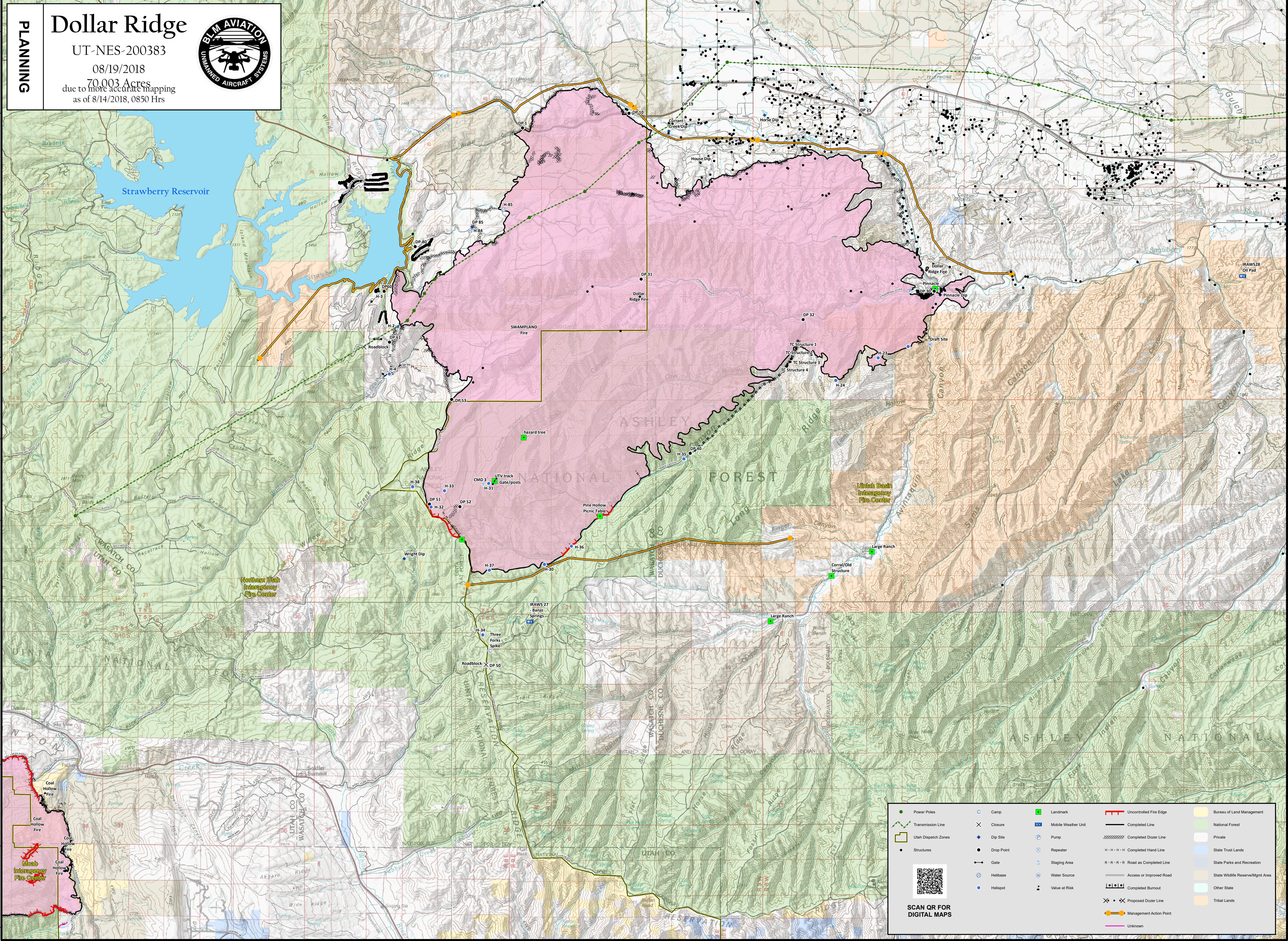


111°24'W 111°22'W 111°20'W 111°18'W 111°16'W 111°14'W 111°12'W 111°10'W 110°58'W 110°56'W 110°54'W 110°52'W 110°50'W 110°48'W 110°46'W 110°44'W 110°42'W 110°40'W 110°38'W 110°36'W 110°34'W

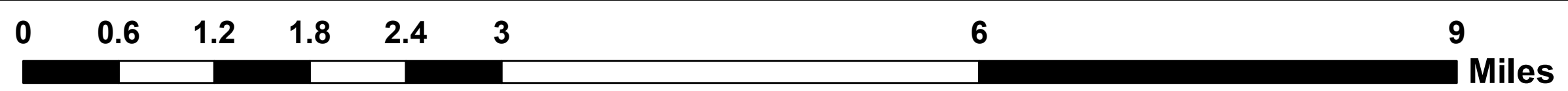
PLANNING

Dollar Ridge

UT-NES-200383
08/19/2018
70,003 Acres
due to more accurate mapping
as of 8/14/2018, 0850 Hrs



Coordinate System: NAD 1983 UTM Zone 12N
Map Scale: 1:50,000, 1 inch = 4,167 feet



Power Poles	Camp	Landmark	Uncontrolled Fire Edge	Bureau of Land Management
Transmission Line	Closure	Mobile Weather Unit	Completed Line	National Forest
Utah Dispatch Zones	Dip Site	Pump	Completed Dozer Line	Private
Structures	Drop Point	Repeater	Completed Hand Line	State Trust Lands
	Gate	Staging Area	Road as Completed Line	State Parks and Recreation
	Helibase	Water Source	Access or Improved Road	State Wildlife Reserve/Mgmt Area
	Helispot	Value at Risk	Completed Burnout	Other State
			Proposed Dozer Line	Tribal Lands
			Management Action Point	Unknown

SCAN QR FOR DIGITAL MAPS