

115°51'0"W

115°50'0"W

115°49'0"W

115°48'0"W

115°47'0"W

44°22'0"N

44°21'0"N

44°20'0"N

44°19'0"N

44°18'0"N

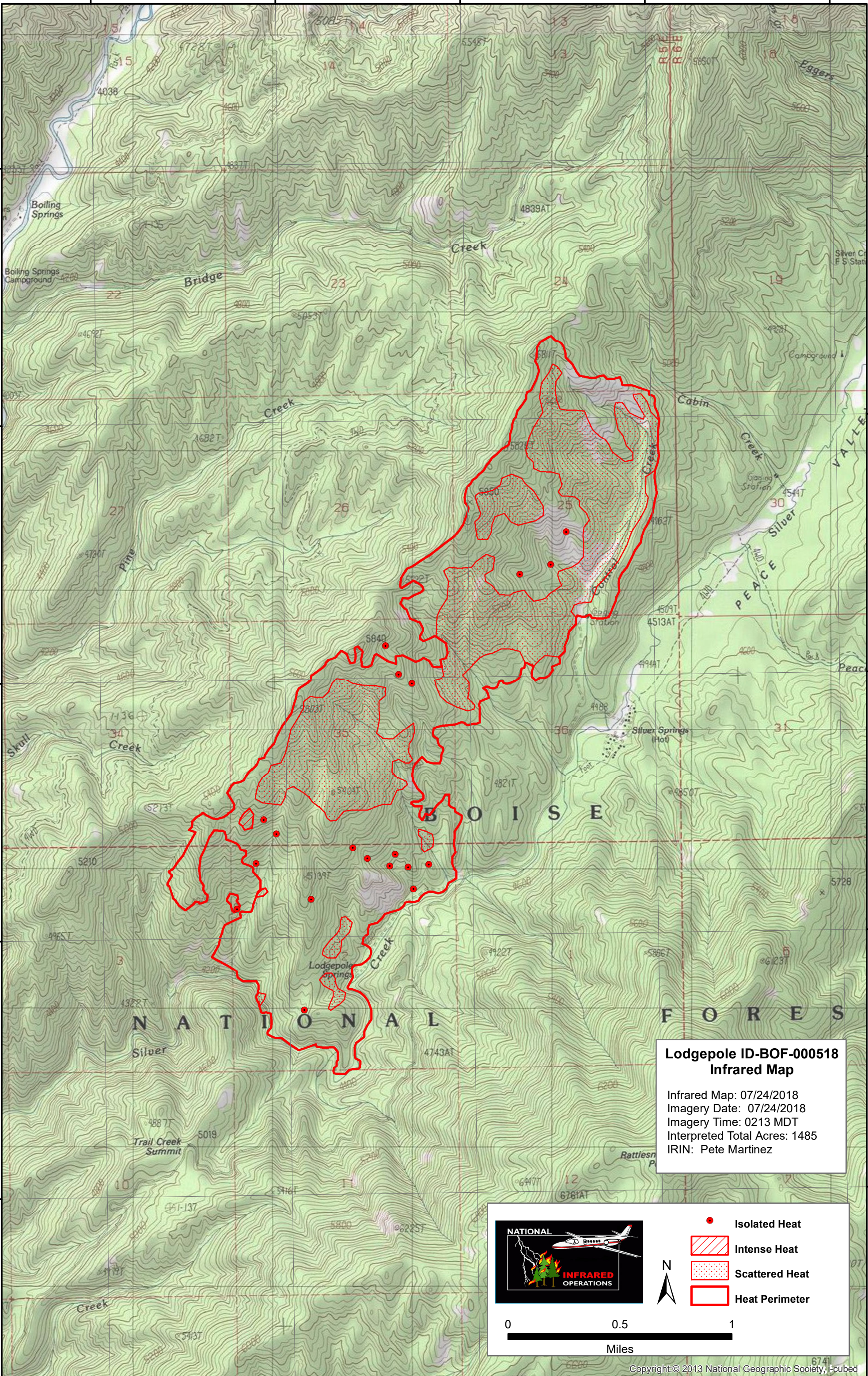
44°22'0"N

44°21'0"N

44°20'0"N

44°19'0"N

44°18'0"N



**Lodgepole ID-BOF-000518
Infrared Map**

Infrared Map: 07/24/2018
 Imagery Date: 07/24/2018
 Imagery Time: 0213 MDT
 Interpreted Total Acres: 1485
 IRIN: Pete Martinez

NATIONAL INFRARED OPERATIONS

- Isolated Heat
- Intense Heat
- Scattered Heat
- Heat Perimeter

N

0 0.5 1
Miles