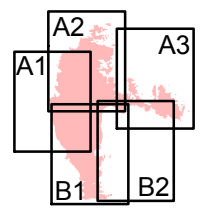
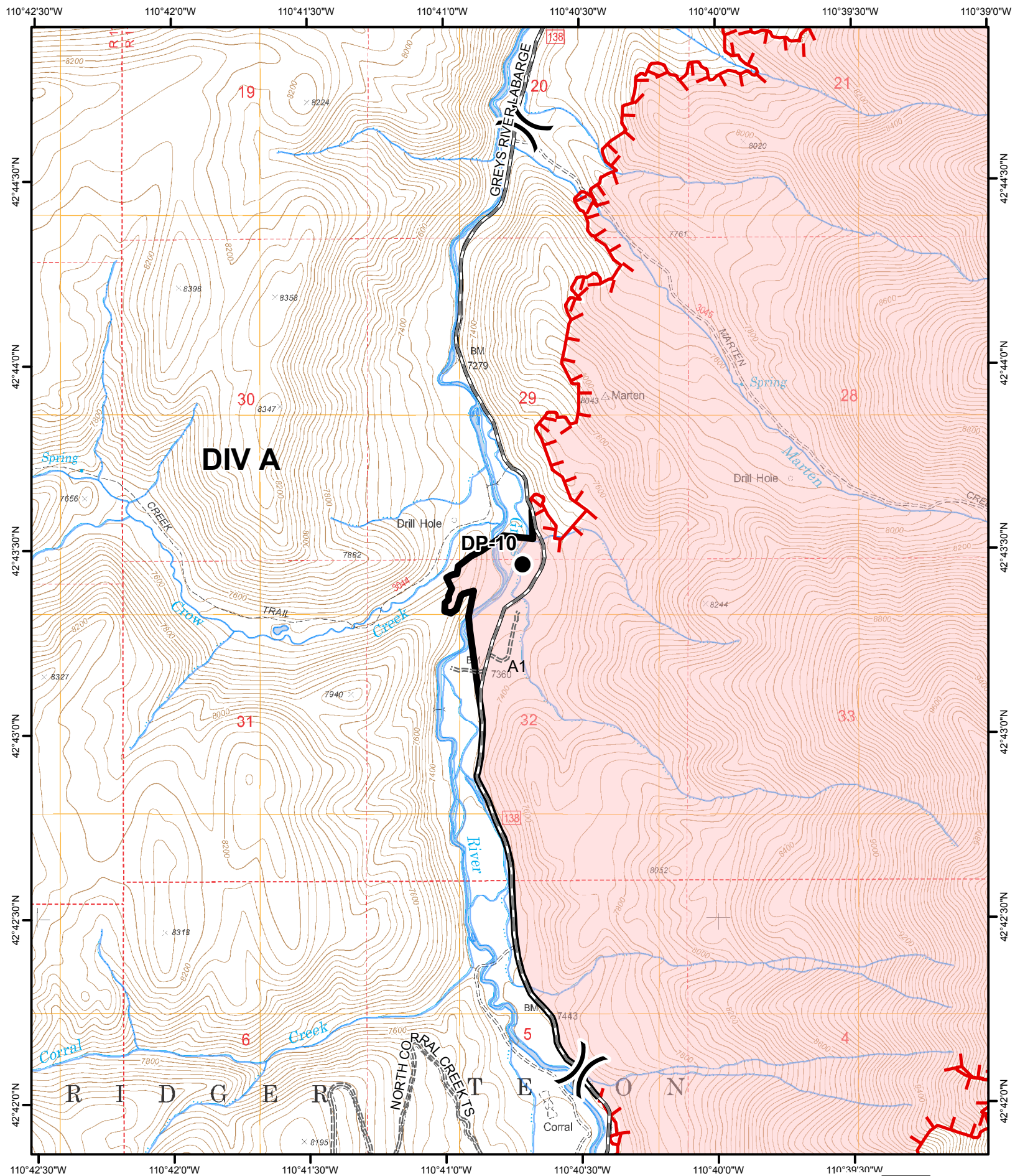


Marten Creek Fire
IAP Index
 WY-BTF-001825
 9/23/2018
5,602 ACRES

- Division Break
- Roads
- Uncontrolled Fire Edge
- Completed Line
- Fire Area

0 0.5 1 Miles



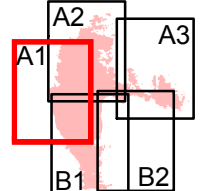


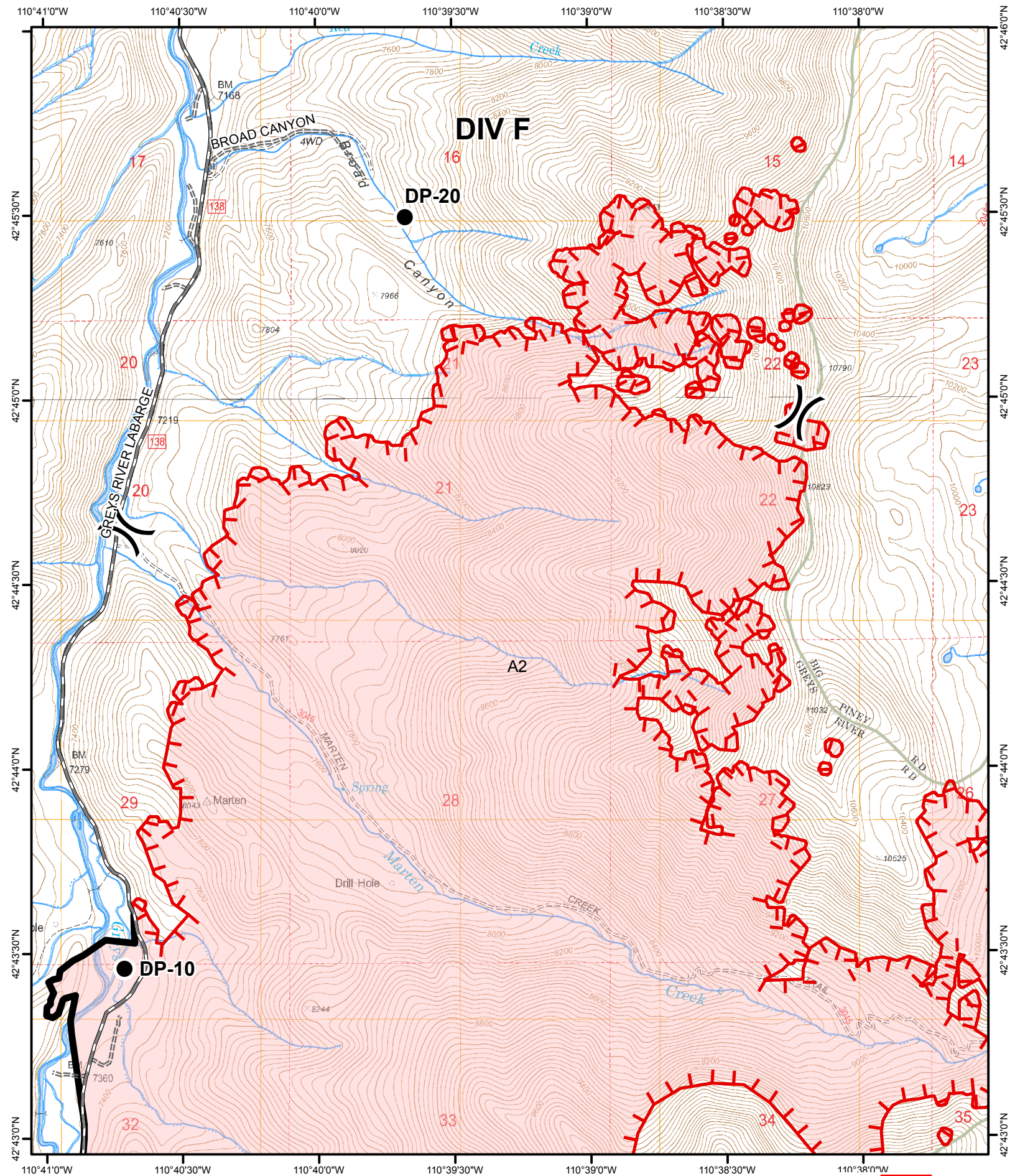
Marten Creek Fire
IAP Tile: A1
 WY-BTF-001825
 9/23/2018
5,602 ACRES

- Drop Point
- Uncontrolled Fire Edge
- Gravel Surface
- Completed Line
- Native Material
- Fire Area

N

0 5 10 Miles





Marten Creek Fire
IAP Tile: A2
 WY-BTF-001825
 9/23/2018
5,602 ACRES

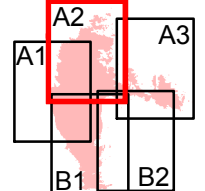
- Drop Point
- Uncontrolled Fire Edge
- Gravel Surface
- Native Material
- Completed Line
- Fire Area

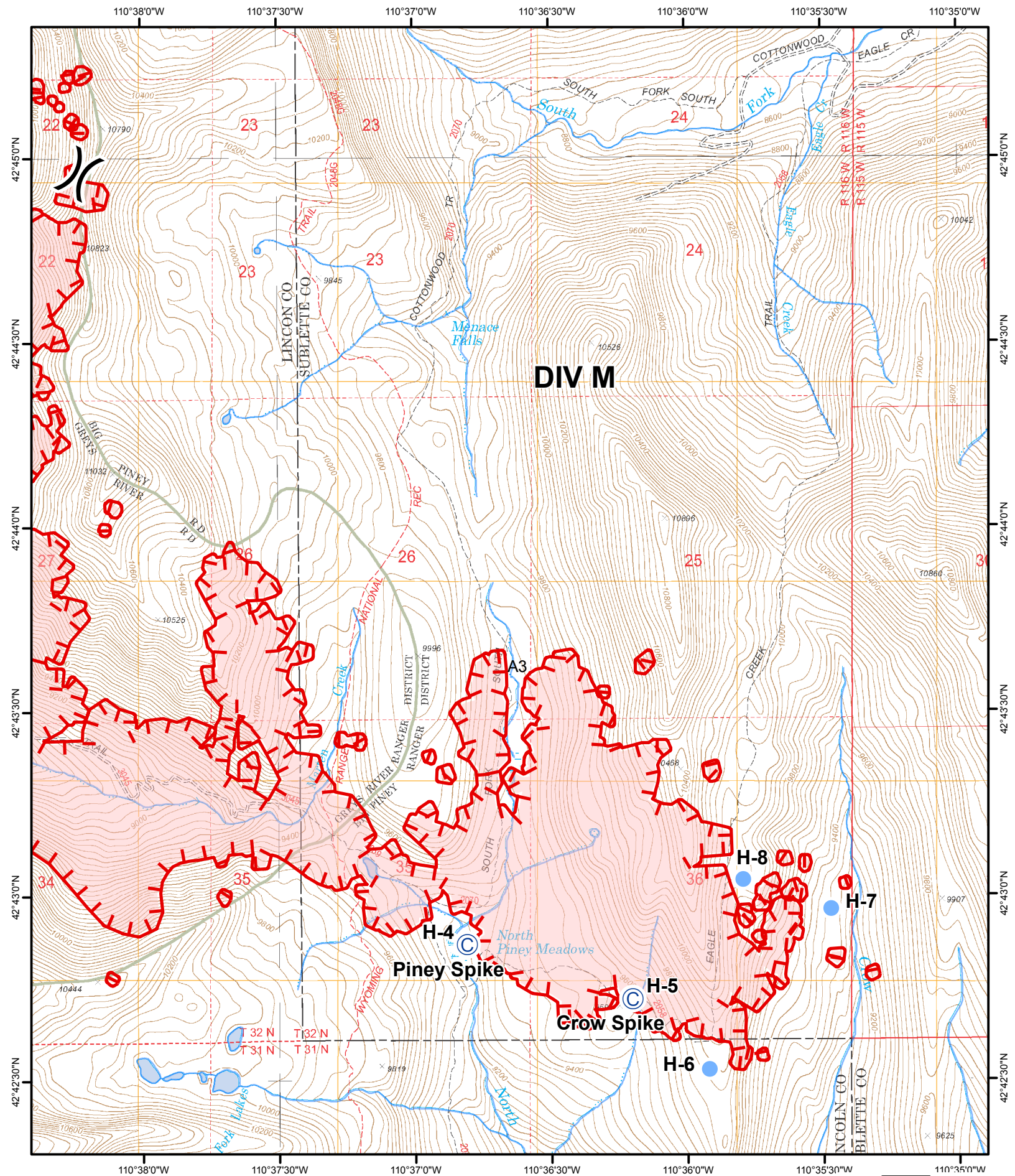








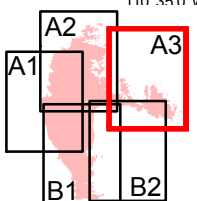




Marten Creek Fire
IAP Tile: A3
 WY-BTF-001825
 9/23/2018
5,602 ACRES

- Camp
- Uncontrolled Fire Edge
- Fire Area
- Helispot

0 5 10 Miles



DIV M

Piney Spike

Crow Spike

H-4

H-5

H-8

H-7

H-6

A3

LINCOLN CO
 SUBLETTE CO

WYOMING

GRAND RIVER RANGER DISTRICT

PINEY RANGER DISTRICT

SOUTH

North Piney Meadows

Trail Creek

Manace Falls

TRAIL CR

TRAIL CR

TRAIL CR

TRAIL CR

TRAIL CR

TRAIL CR

TRAIL CR

TRAIL CR

TRAIL CR

SOUTH FORK SOUTH FORK

South Fork

South Fork

South Fork

South Fork

South Fork

South Fork

South Fork

South Fork

South Fork

South Fork

South Fork

South Fork

South Fork

South Fork

South Fork

South Fork

South Fork

South Fork

South Fork

South Fork

South Fork

South Fork

South Fork

South Fork

South Fork

South Fork

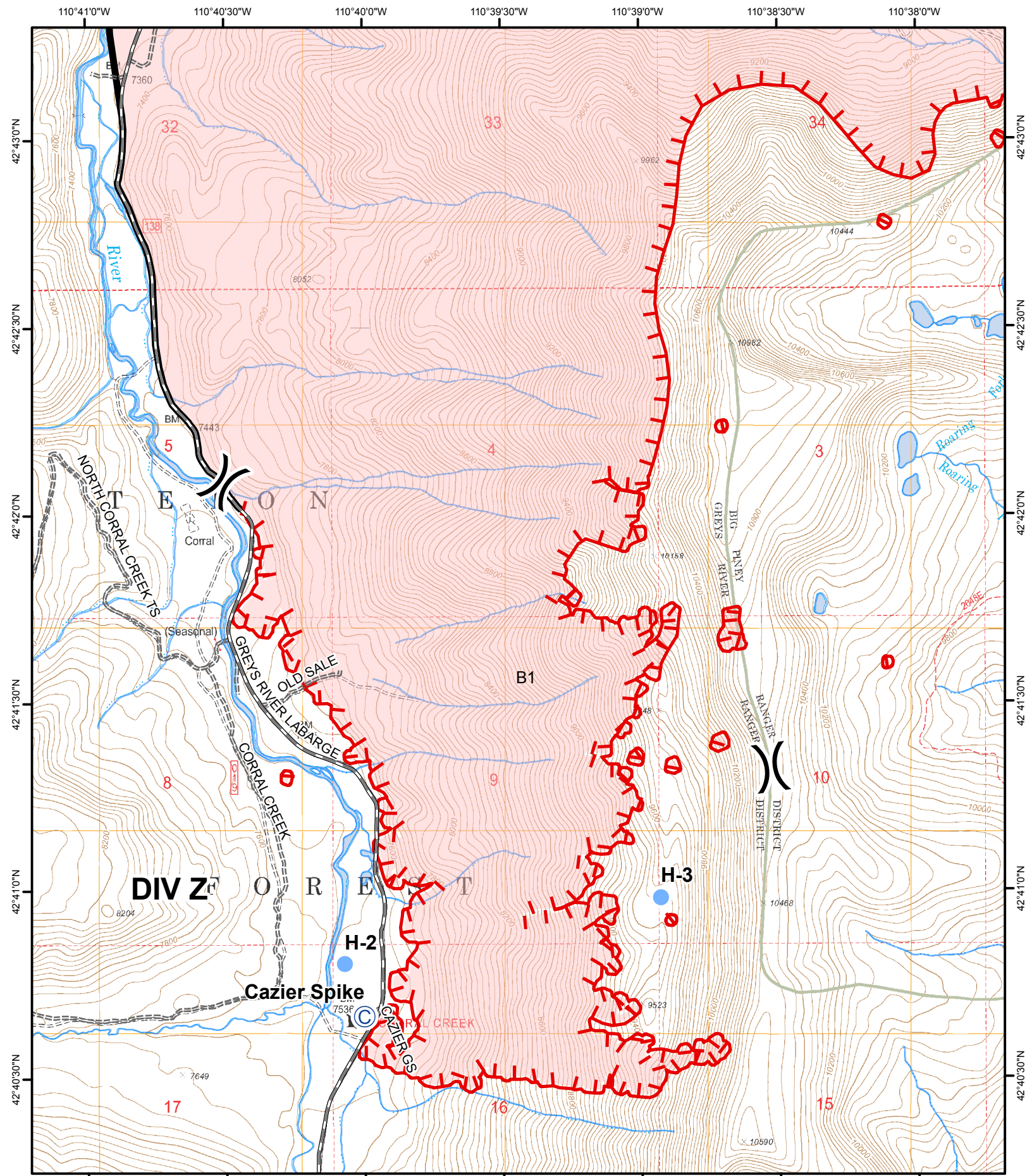
South Fork

South Fork

South Fork

South Fork

South Fork



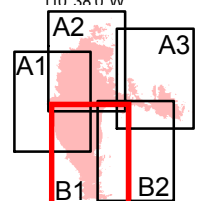
Marten Creek Fire
IAP Tile: B1
 WY-BTF-001825
 9/23/2018
5,602 ACRES

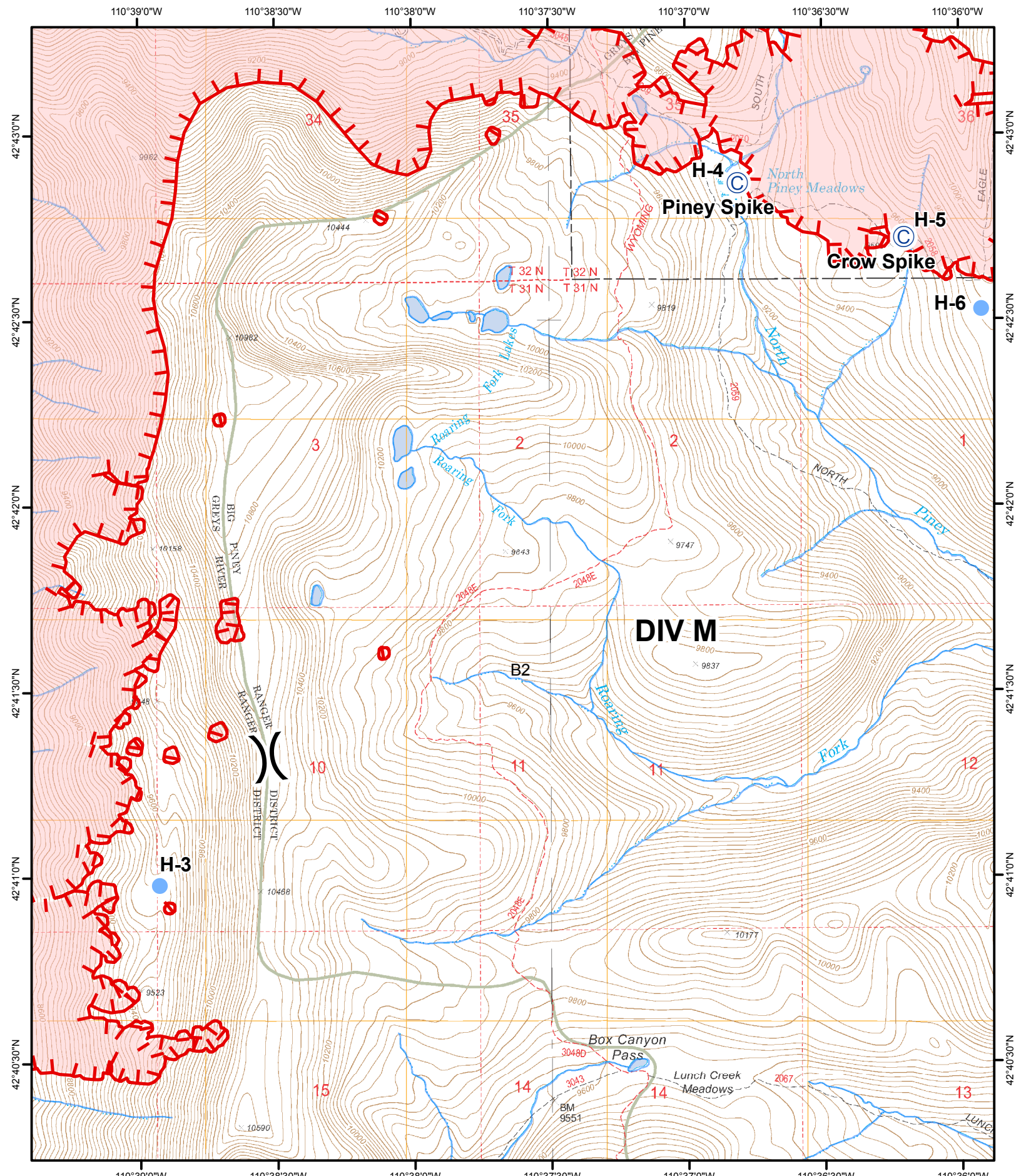
- Camp
- Helispot
- Gravel Surface
- Native Material
- Uncontrolled Fire Edge
- Completed Line
- Fire Area

0 5 10 Miles

Emergency Incident Management Team

N





Marten Creek Fire
IAP Tile: B2
 WY-BTF-001825
 9/23/2018
5,602 ACRES

- Camp
- Uncontrolled Fire Edge
- Fire Area
- Helispot

0 5 10 Miles

