

110°44'30"W 110°44'0"W 110°43'30"W 110°43'0"W 110°42'30"W 110°42'0"W 110°41'30"W 110°41'0"W 110°40'30"W 110°40'0"W 110°39'30"W 110°39'0"W 110°38'30"W 110°38'0"W 110°37'30"W 110°37'0"W 110°36'30"W 110°36'0"W 110°35'30"W 110°35'0"W 110°34'30"W

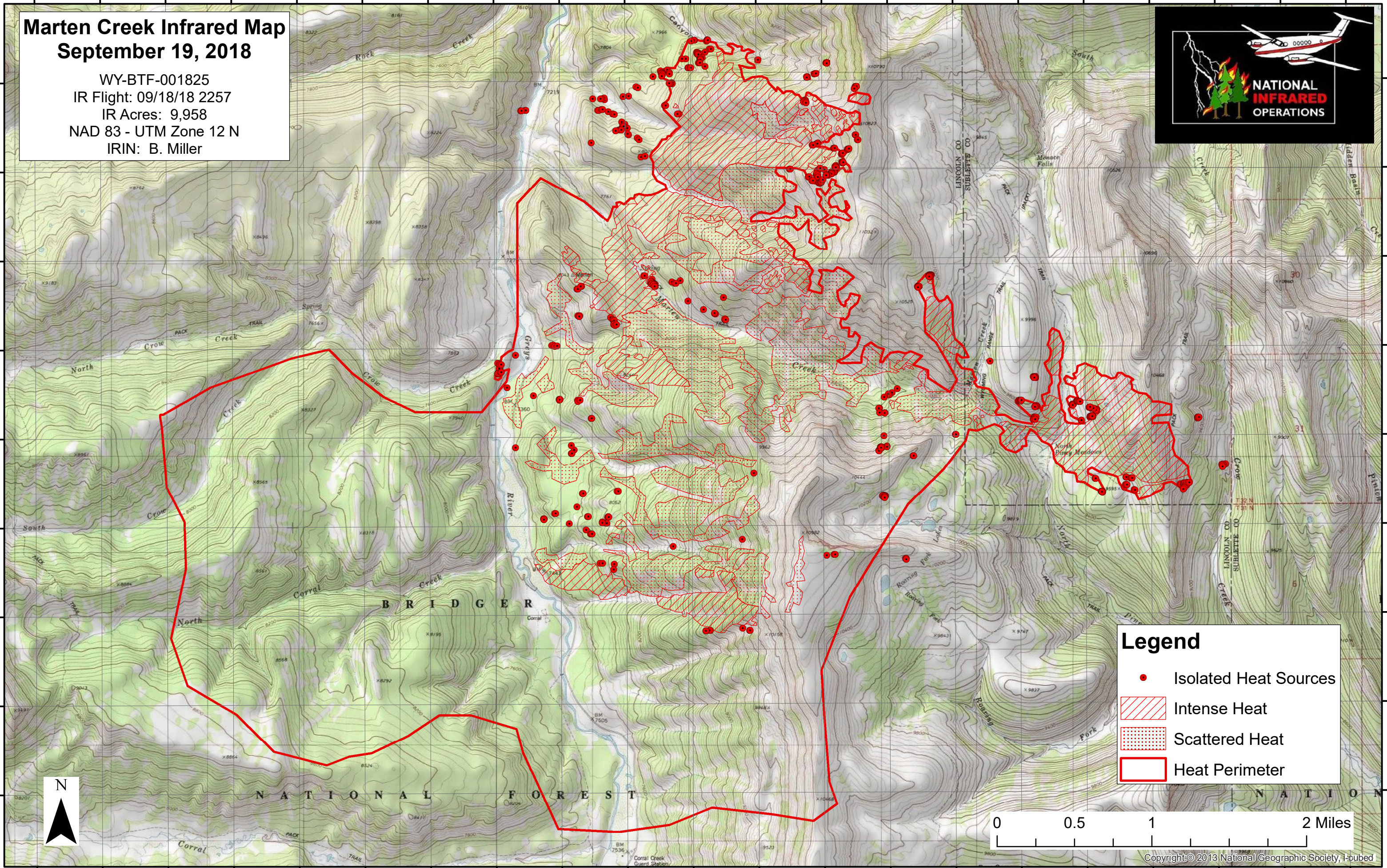
Marten Creek Infrared Map September 19, 2018

WY-BTF-001825
IR Flight: 09/18/18 2257
IR Acres: 9,958
NAD 83 - UTM Zone 12 N
IRIN: B. Miller



42°45'0"N
42°44'30"N
42°44'0"N
42°43'30"N
42°43'0"N
42°42'30"N
42°42'0"N
42°41'30"N
42°41'0"N

42°45'0"N
42°44'30"N
42°44'0"N
42°43'30"N
42°43'0"N
42°42'30"N
42°42'0"N
42°41'30"N
42°41'0"N



Legend

- Isolated Heat Sources
- Intense Heat
- Scattered Heat
- Heat Perimeter



110°44'30"W 110°44'0"W 110°43'30"W 110°43'0"W 110°42'30"W 110°42'0"W 110°41'30"W 110°41'0"W 110°40'30"W 110°40'0"W 110°39'30"W 110°39'0"W 110°38'30"W 110°38'0"W 110°37'30"W 110°37'0"W 110°36'30"W 110°36'0"W 110°35'30"W 110°35'0"W 110°34'30"W