
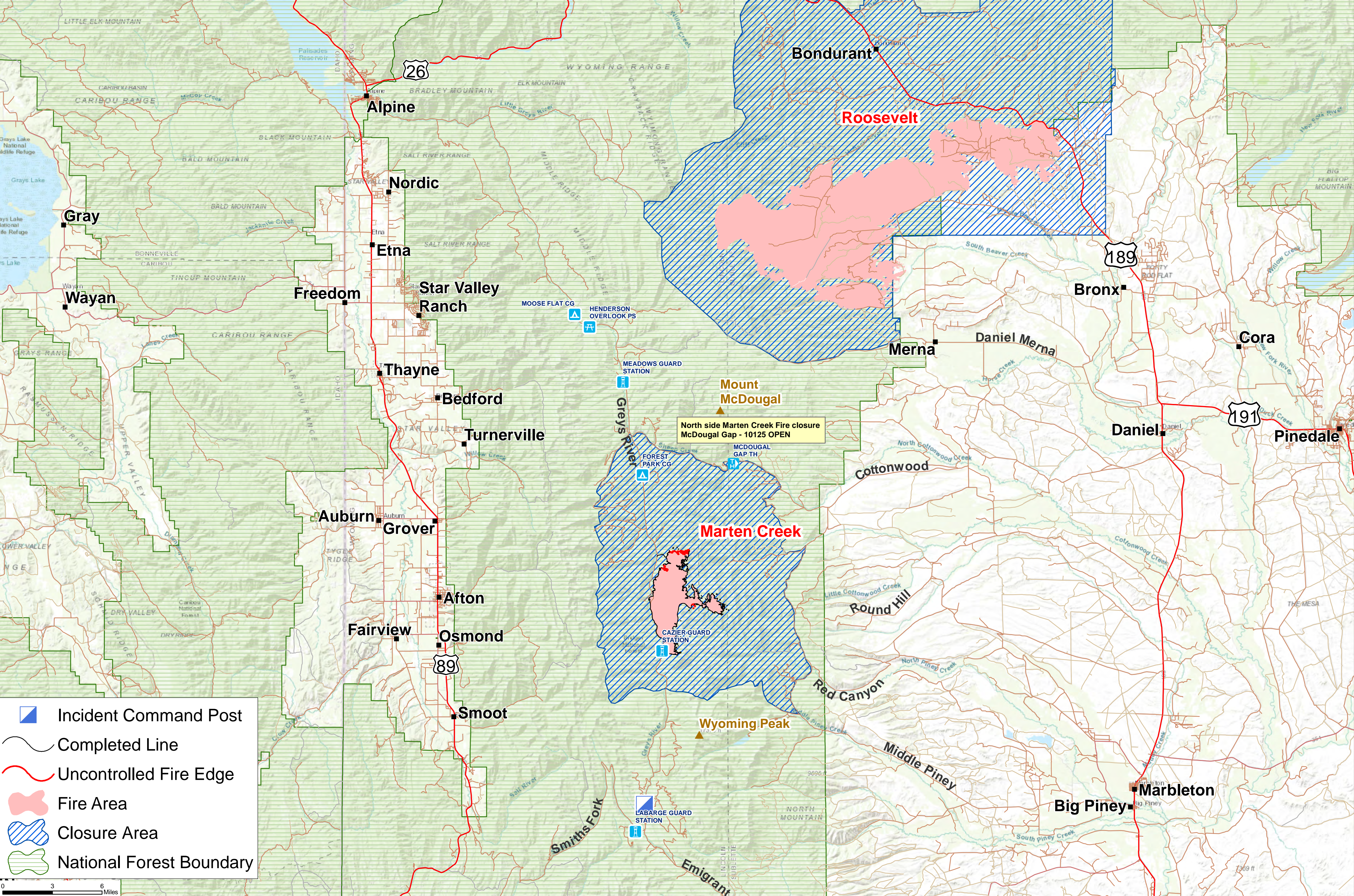








**Public Information Map**  
**Marten Creek Fire**  
**WY-BTF-001825**  
**9/29/2018**  
**6,486 ACRES**



East side Marten Creek Fire closure  
 Foster Meadow - 10344 OPEN  
 Foster Meadow Spur - 10344A OPEN  
 Wyoming Range - 10046 OPEN  
 South Cottonwood - 10050 to jct. of Lander Creek 103500 OPEN  
 Lander Creek - 103500 to jct. of Lander Creek Spur - 103500A OPEN



-  Incident Command Post
-  Completed Line
-  Uncontrolled Fire Edge
-  Fire Area
-  Closure Area
-  National Forest Boundary

