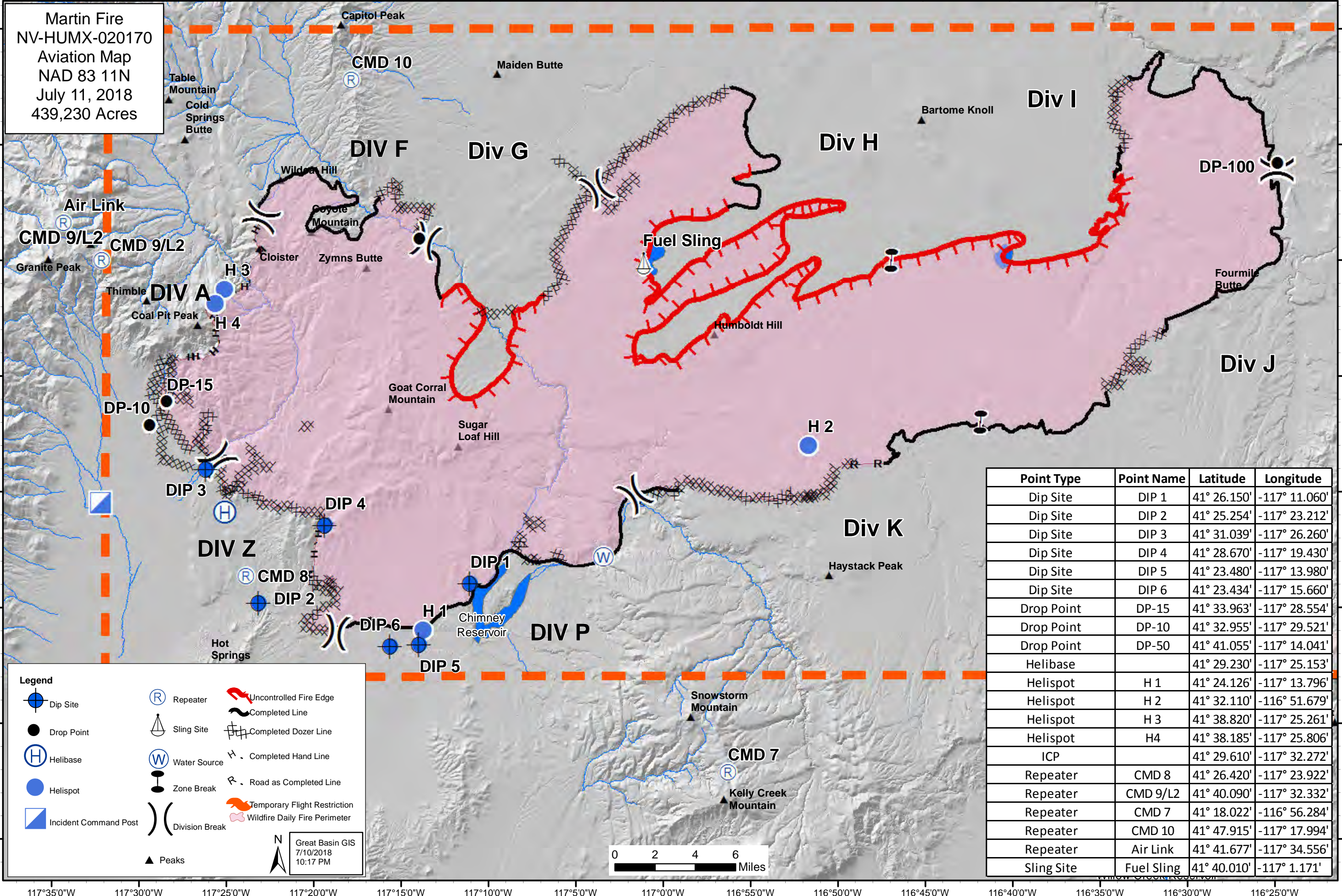


**Martin Fire**  
 NV-HUMX-020170  
 Aviation Map  
 NAD 83 11N  
 July 11, 2018  
 439,230 Acres



**Legend**

- Dip Site (Blue circle with 'D')
- Drop Point (Black circle)
- Helibase (Blue circle with 'H')
- Helispot (Blue circle)
- Incident Command Post (Blue square)
- Repeater (Blue circle with 'R')
- Sling Site (Sailboat icon)
- Water Source (Blue circle with 'W')
- Zone Break (Black circle with vertical line)
- Peaks (Black triangle)
- Uncontrolled Fire Edge (Red dashed line)
- Completed Line (Solid black line)
- Completed Dozer Line (Cross-hatched line)
- Completed Hand Line (Line with 'H' markers)
- Road as Completed Line (Line with 'R' markers)
- Temporary Flight Restriction (Orange dashed line)
- Wildfire Daily Fire Perimeter (Pink dashed line)
- Division Break (Thick black line with 'X' marks)

Great Basin GIS  
 7/10/2018  
 10:17 PM

Point Type	Point Name	Latitude	Longitude
Dip Site	DIP 1	41° 26.150'	-117° 11.060'
Dip Site	DIP 2	41° 25.254'	-117° 23.212'
Dip Site	DIP 3	41° 31.039'	-117° 26.260'
Dip Site	DIP 4	41° 28.670'	-117° 19.430'
Dip Site	DIP 5	41° 23.480'	-117° 13.980'
Dip Site	DIP 6	41° 23.434'	-117° 15.660'
Drop Point	DP-15	41° 33.963'	-117° 28.554'
Drop Point	DP-10	41° 32.955'	-117° 29.521'
Drop Point	DP-50	41° 41.055'	-117° 14.041'
Helibase		41° 29.230'	-117° 25.153'
Helispot	H 1	41° 24.126'	-117° 13.796'
Helispot	H 2	41° 32.110'	-116° 51.679'
Helispot	H 3	41° 38.820'	-117° 25.261'
Helispot	H 4	41° 38.185'	-117° 25.806'
ICP		41° 29.610'	-117° 32.272'
Repeater	CMD 8	41° 26.420'	-117° 23.922'
Repeater	CMD 9/L2	41° 40.090'	-117° 32.332'
Repeater	CMD 7	41° 18.022'	-116° 56.284'
Repeater	CMD 10	41° 47.915'	-117° 17.994'
Repeater	Air Link	41° 41.677'	-117° 34.556'
Sling Site	Fuel Sling	41° 40.010'	-117° 1.171'

