

Mesa Operations Map

ID-PAF-000270

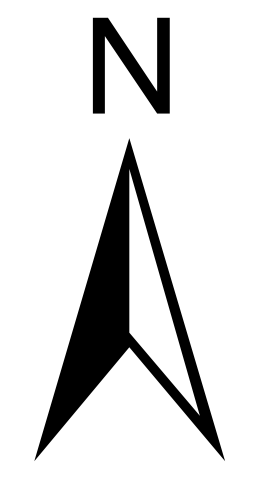
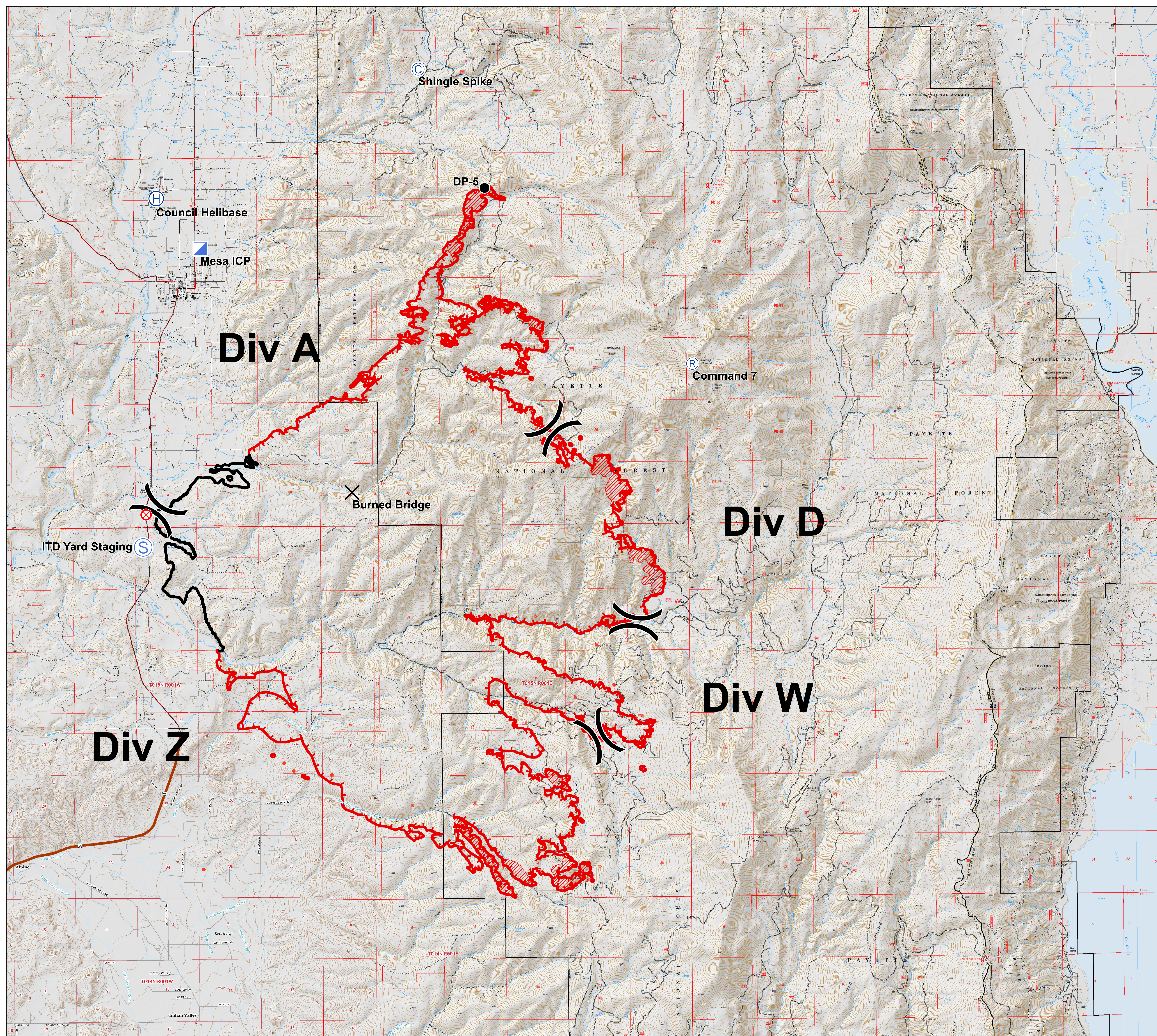
July 30, 2018

Approx. 27,099 acres

- Ⓒ Camp
- × Closure
- Drop Point
- ⊗ Fire Origin
- Ⓔ Helibase
- ▣ Incident Command Post
- Ⓔ Repeater
- Ⓔ Staging Area
- Other
-) (Division Break
- ▬ Uncontrolled Fire Edge
- ▬ Completed Line

IR July 29, 2018. 2007 hrs

- Isolated Heat Sources
- ▨ Intense Heat



Coordinate System: NAD 1983 UTM Zone 11N
Map created at 7/29/2018 2357 Hrs