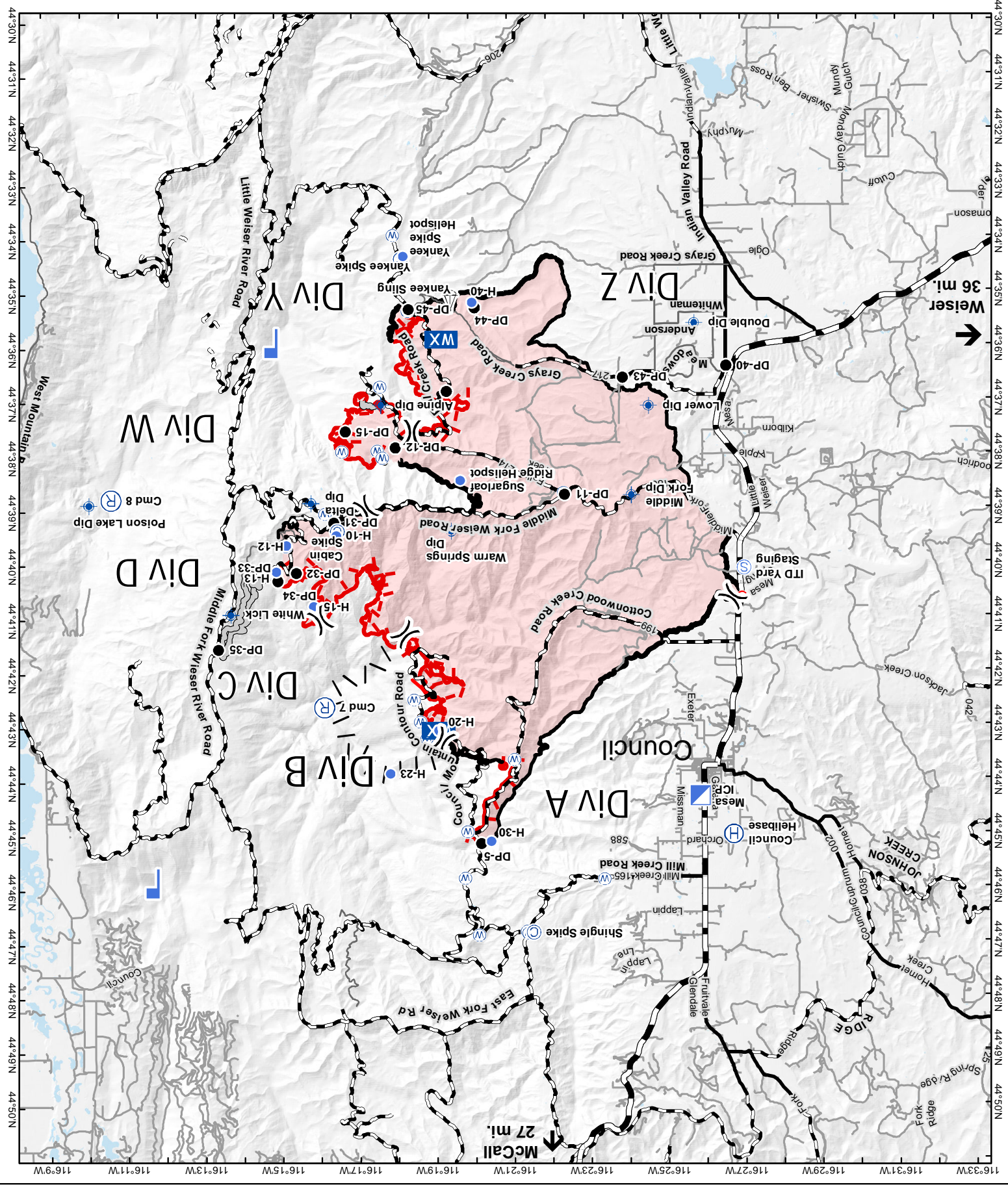


Mesa Fire Transportation Map ID-PAF-000270 August 9, 2018

- Camp
- Dip Site
- Drop Point
- Fire Origin
- Helibase
- Helispot
- Incident Command Post
- Lookout
- Repeater
- Sling Site
- Staging Area
- Water Source
- WX (Weather Unit)
- Proposed Burnout
- Completed Line
- Uncontrolled Fire Edge
- Active Burnout
- Access or Improved Road



NAD83 UTM Z11N



44°30'N
44°31'N
44°32'N
44°33'N
44°34'N
44°35'N
44°36'N
44°37'N
44°38'N
44°39'N
44°40'N
44°41'N
44°42'N
44°43'N
44°44'N
44°45'N
44°46'N
44°47'N
44°48'N
44°49'N
44°50'N

116°33'W
116°34'W
116°35'W
116°36'W
116°37'W
116°38'W
116°39'W
116°40'W
116°41'W
116°42'W
116°43'W
116°44'W
116°45'W
116°46'W
116°47'W
116°48'W
116°49'W
116°50'W

MESA FIRE

ID-PAF-000270

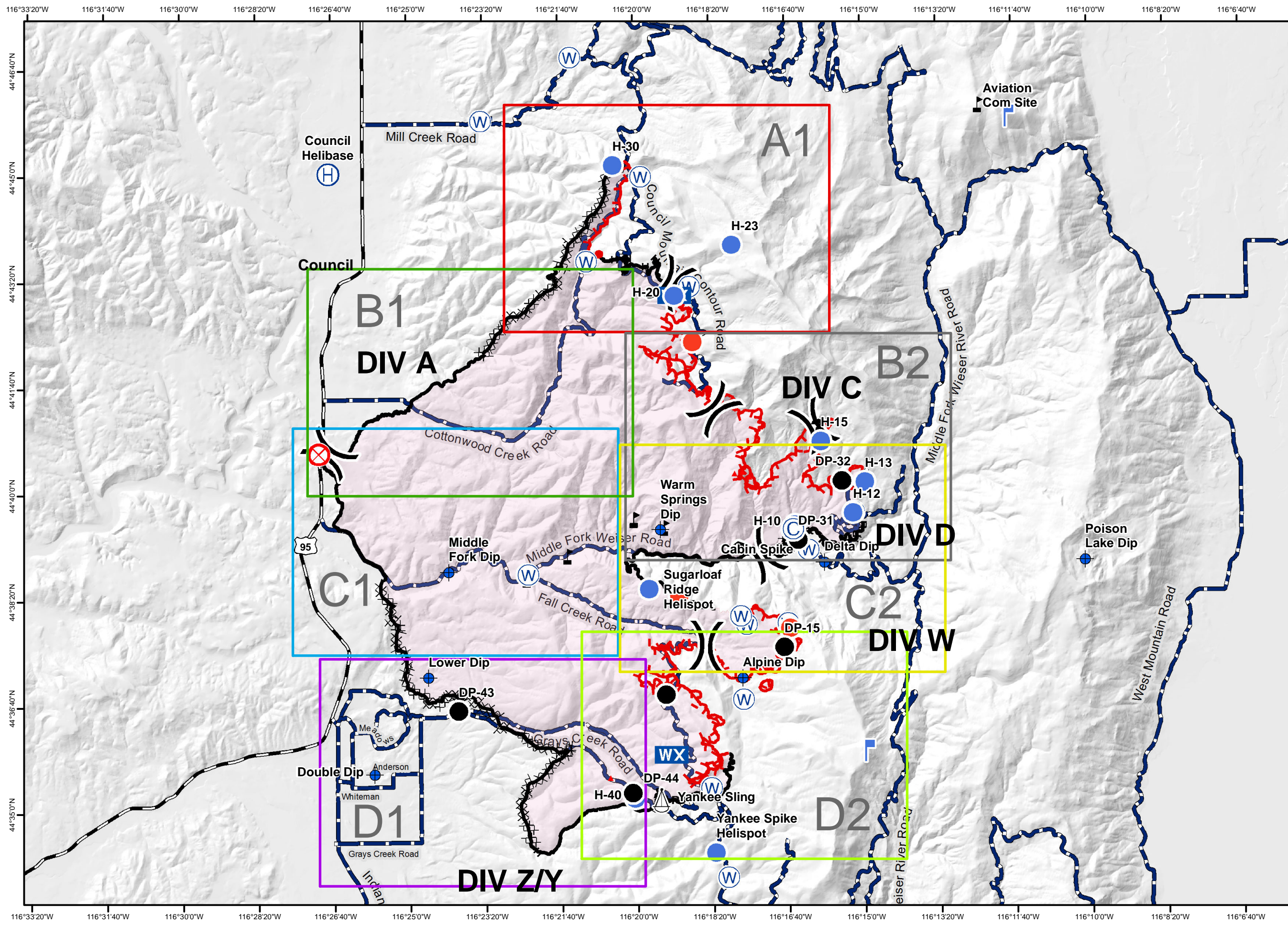
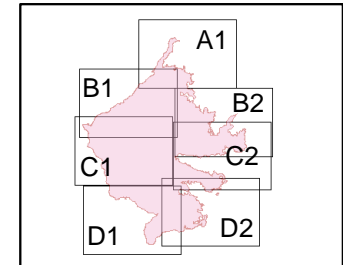
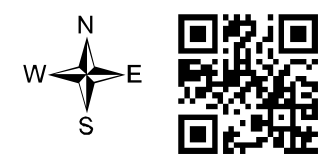
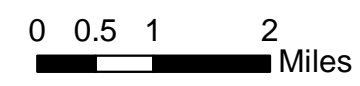
August 9, 2018



IAP MAP

33,984 acres

- Safety - Hazards
- Repeater
- Camp
- Staging Area
- Drop Point
- Infrastructure
- Dip Site
- Structures
- Fire Origin
- Division Break
- Water Source
- Lookout
- Recreation Site
- Facilities
- Communication Site
- Helibase
- ICP
- Main Road
- Dozer Opened Road
- Handline
- Completed Line
- Uncontrolled Fire Edge
- Dozer Line
- Fence
- Powerline

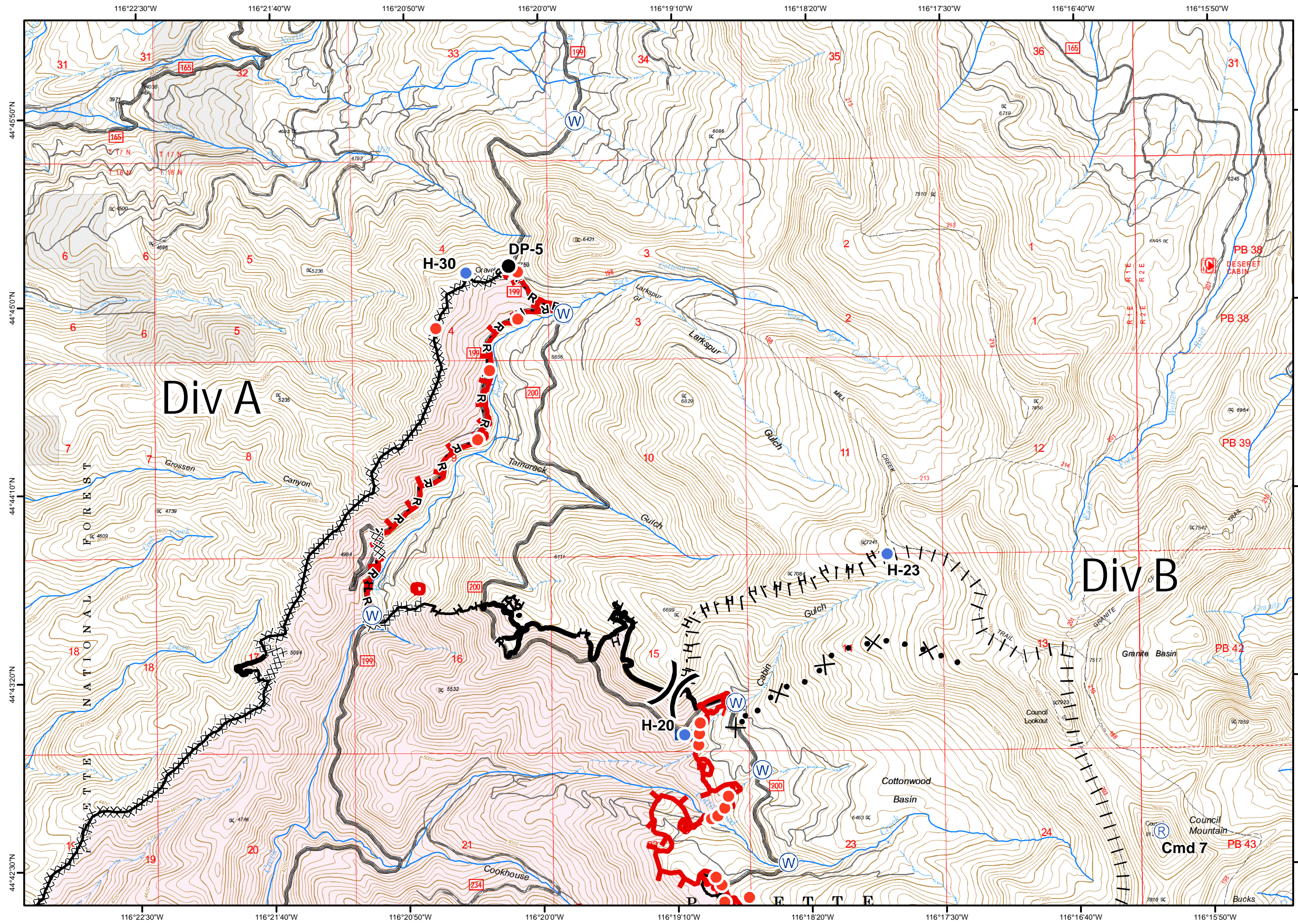


MESA FIRE

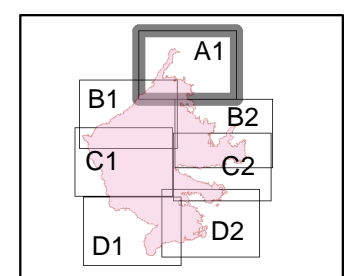
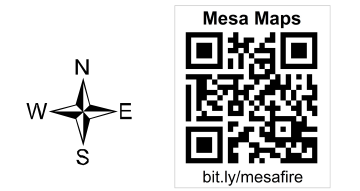
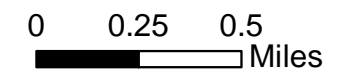
ID-PAF-000270
August 9, 2018



IAP Tile: A1
33,984 acres



- Helispot
- Drop Point
- Hot Spot
- WX Mobile Weather Unit
- Ⓡ Repeater
- Ⓜ Water Source
- H - Completed Hand Line
- XXXX Completed Dozer Line
- ┌ Uncontrolled Fire Edge
- ▬ Completed Line
- R - Road as Completed Line
- || Proposed Burnout
- └ Active Burnout
- ⊗ Proposed Dozer Line
- ▭ Fire Perimeter
- ▭ Private Lands



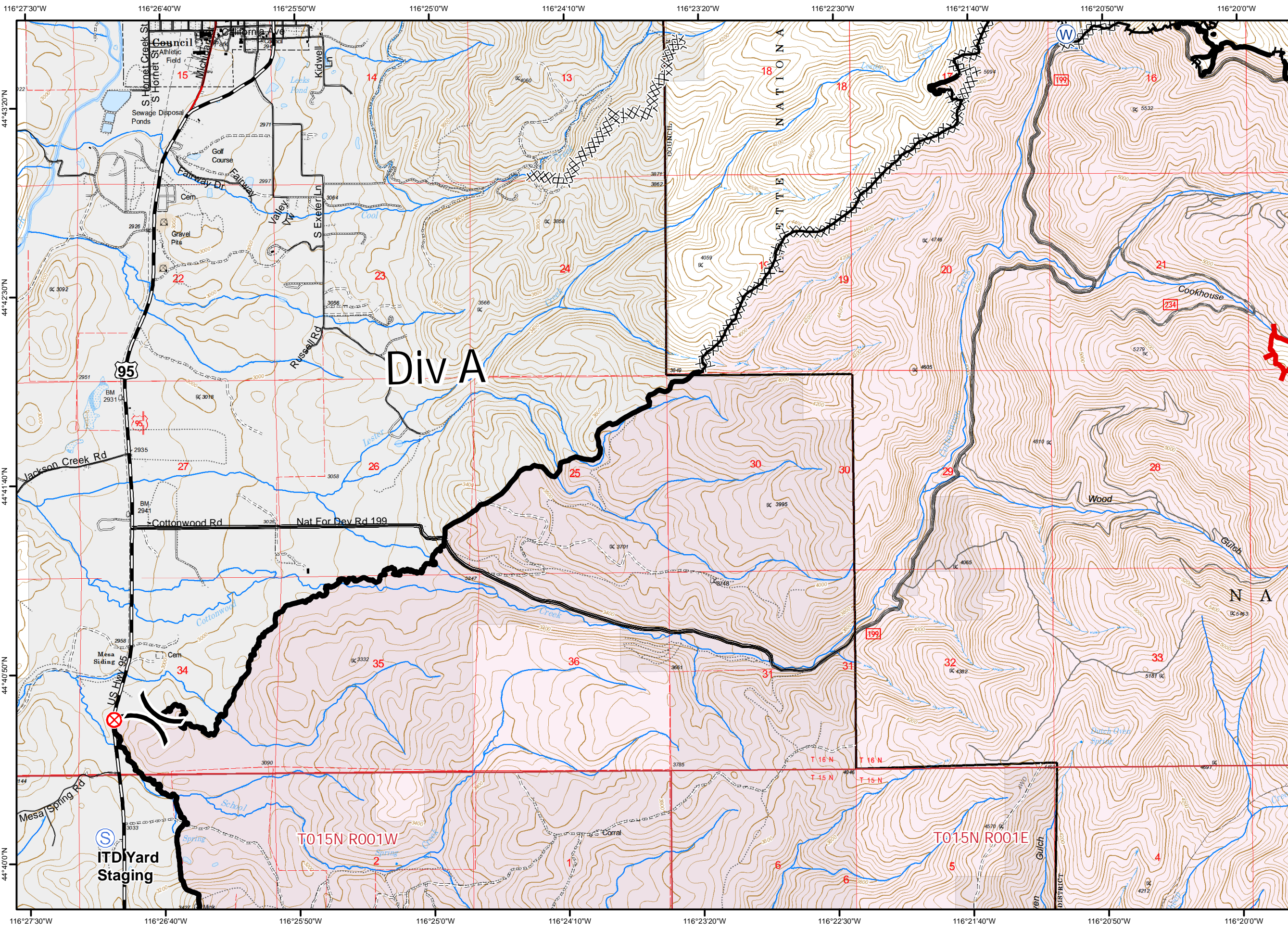
MESA FIRE

ID-PAF-000270

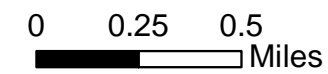
August 9, 2018



IAP Tile: B1
33,984 acres

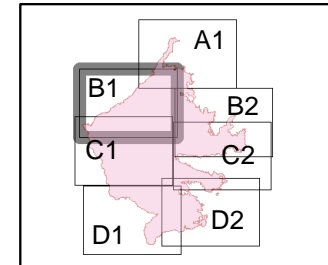


- Fire Origin: July 26, 1911tr
- Staging Area
- Water Source
- Completed Hand Line
- Completed Dozer Line
- Uncontrolled Fire Edge
- Completed Line
- Road as Completed Line
- Fire Perimeter
- Private Lands



Mesa Maps

bit.ly/mesafire



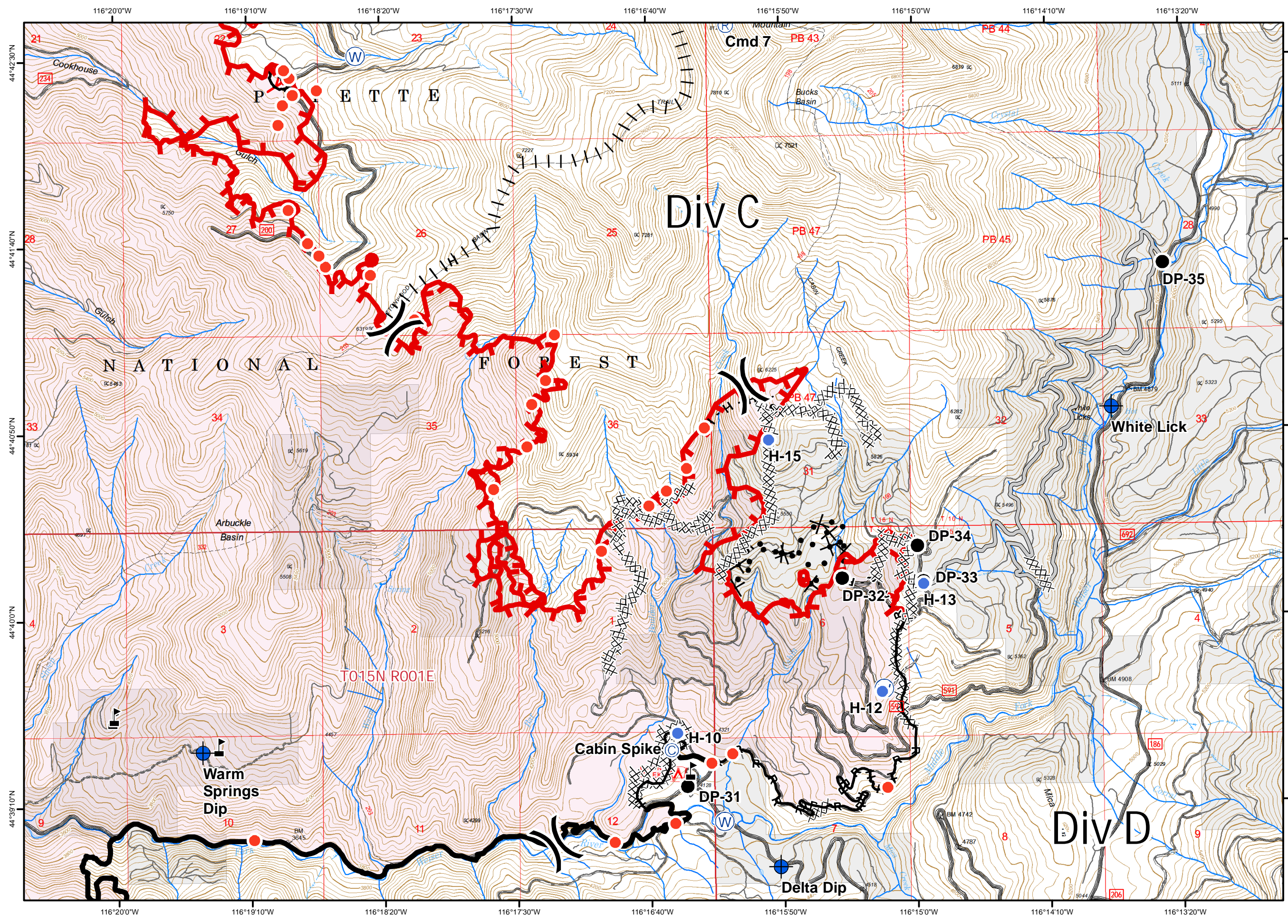
MESA FIRE

ID-PAF-000270

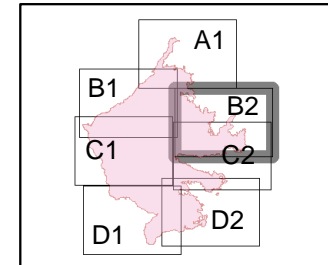
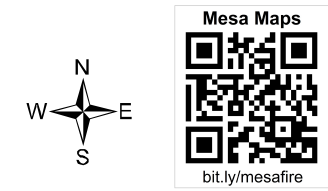
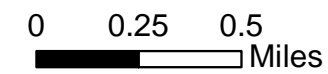
August 9, 2018



IAP Tile: B2
33,984 acres



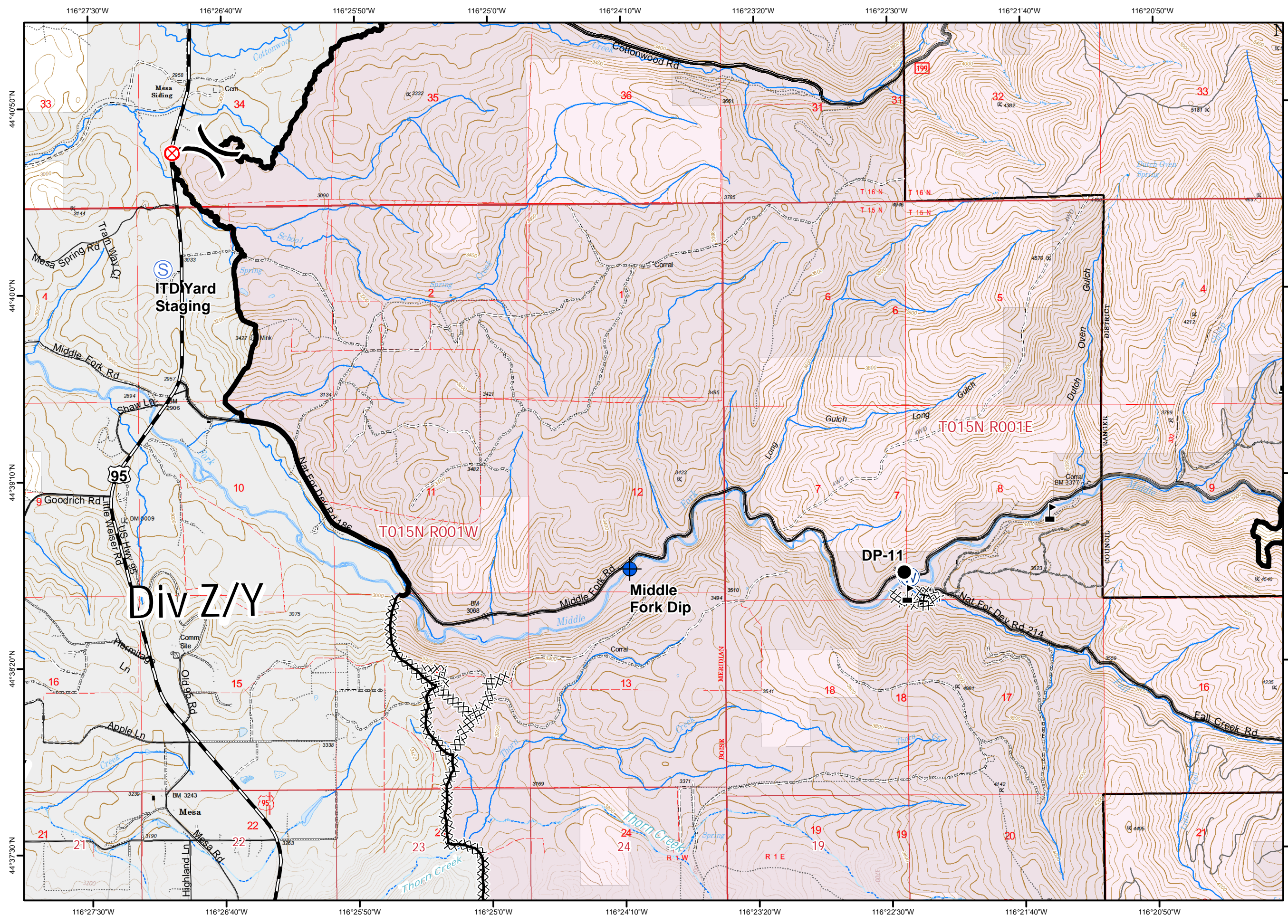
- Camp
- Dip Site
- Value at Risk
- Helispot
- Drop Point
- Hot Spot
- Repeater
- Water Source
- H - Completed Hand Line
- XXXX Completed Dozer Line
- Uncontrolled Fire Edge
- Completed Line
- R - Road as Completed Line
- Access or Improved Road
- Proposed Burnout
- Active Burnout
- Completed Burnout
- Proposed Dozer Line
- Fire Perimeter
- Private Lands



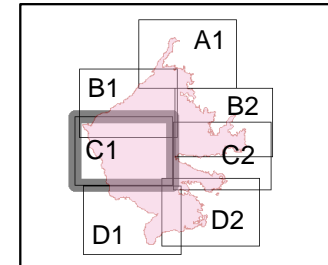
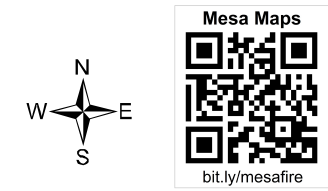
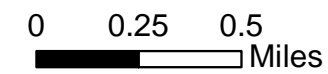
MESA FIRE ID-PAF-000270 August 9, 2018



IAP Tile: C1
33,984 acres



- Dip Site
- Value at Risk
- Drop Point
- Fire Origin: July 26, 1911hr
- Staging Area
- Water Source
- H - Completed Hand Line
- Completed Dozer Line
- Completed Line
- Fire Perimeter
- Private Lands

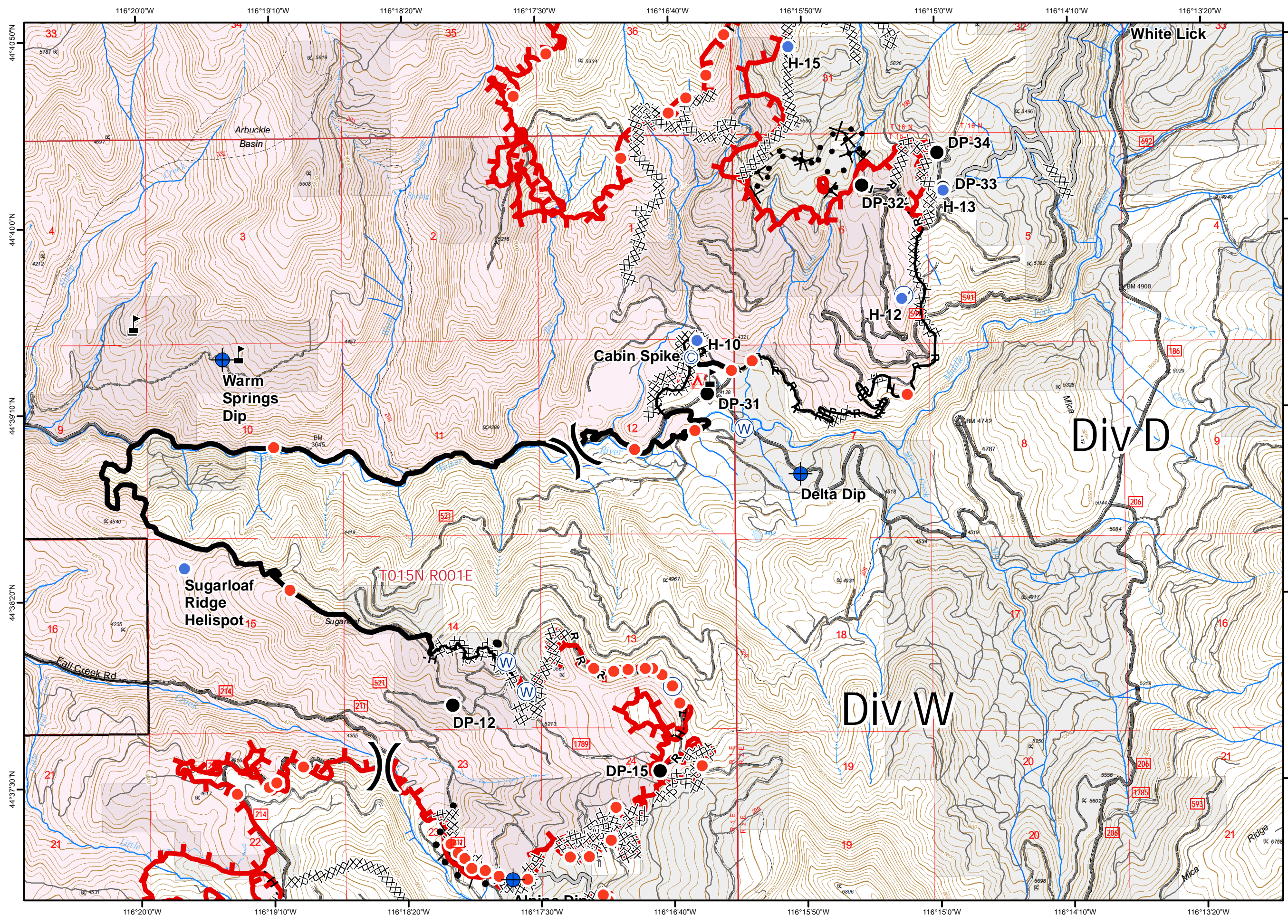


MESA FIRE

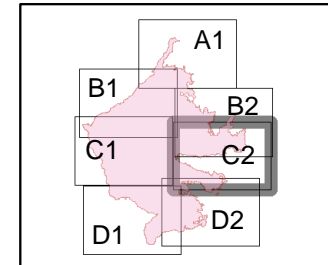
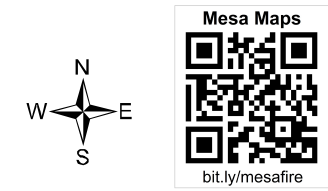
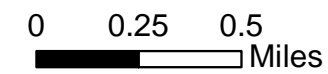
ID-PAF-000270
August 9, 2018



IAP Tile: C2
33,984 acres



- Camp
- Dip Site
- Value at Risk
- Helispot
- Drop Point
- Water Source
- H - Completed Hand Line
- Completed Dozer Line
- Uncontrolled Fire Edge
- Completed Line
- R - Road as Completed Line
- Access or Improved Road
- Completed Burnout
- Proposed Dozer Line
- Fire Perimeter
- Private Lands

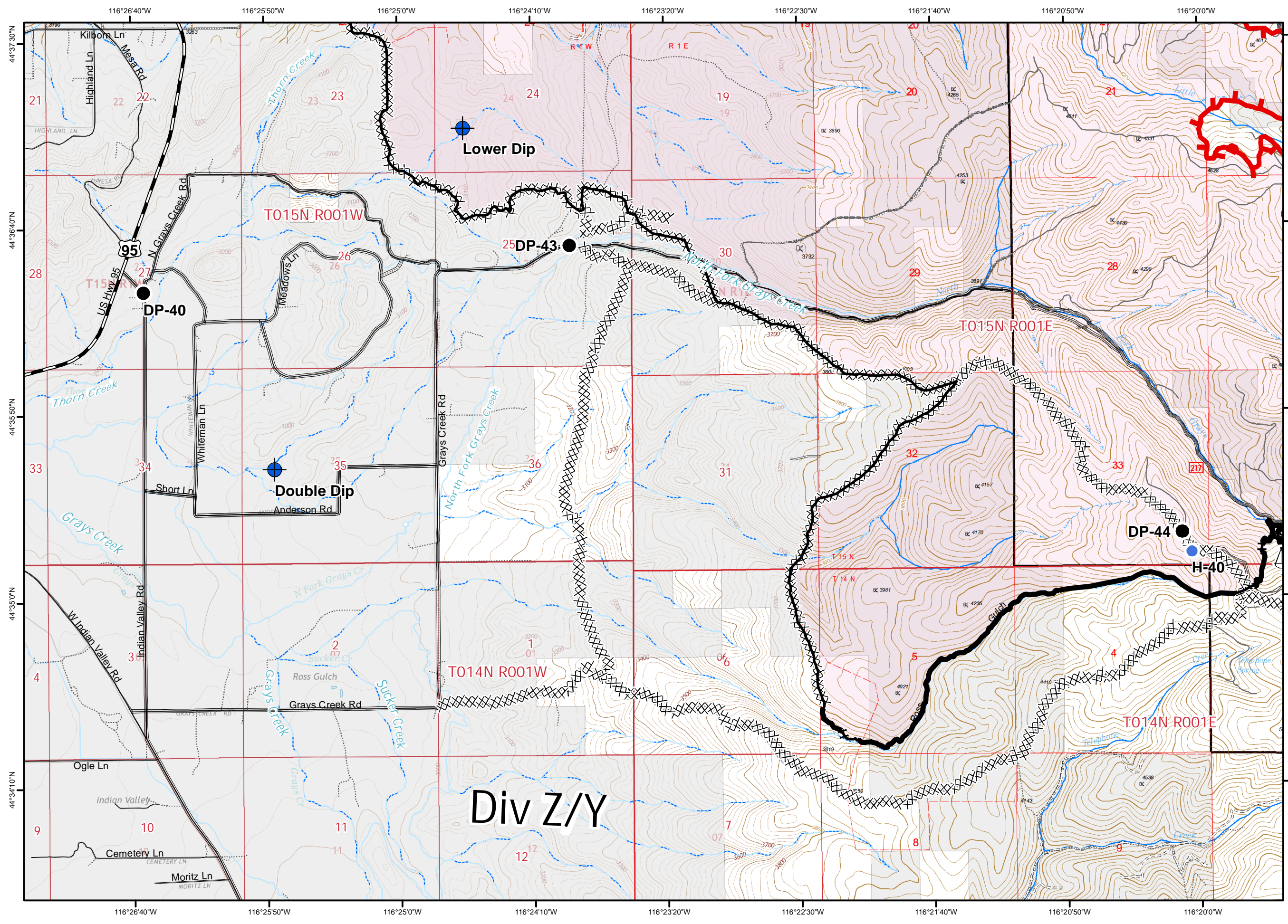


MESA FIRE

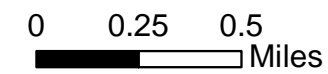
ID-PAF-000270
August 9, 2018



IAP Tile: D1
33,984 acres

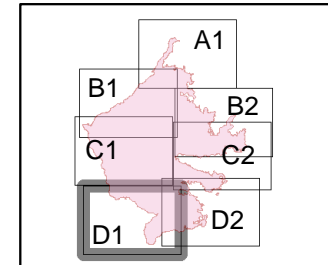


- Dip Site
- Helispot
- Drop Point
- Sling Site
- Completed Hand Line
- Completed Dozer Line
- Uncontrolled Fire Edge
- Completed Line
- Fire Perimeter
- Private Lands



Mesa Maps

bit.ly/mesafire



Div Z/Y

MESA FIRE
ID-PAF-000270
August 9, 2018



IAP Tile: D2
33,984 acres

- Camp
- Dip Site
- Helispot
- Drop Point
- Hot Spot
- Lookout
- Mobile Weather Unit
- Sling Site
- Water Source
- H - Completed Hand Line
- XXXX Completed Dozer Line
- Uncontrolled Fire Edge
- Completed Line
- R - Road as Completed Line
- Access or Improved Road
- Completed Burnout
- Fire Perimeter
- Private Lands

