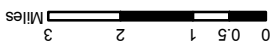


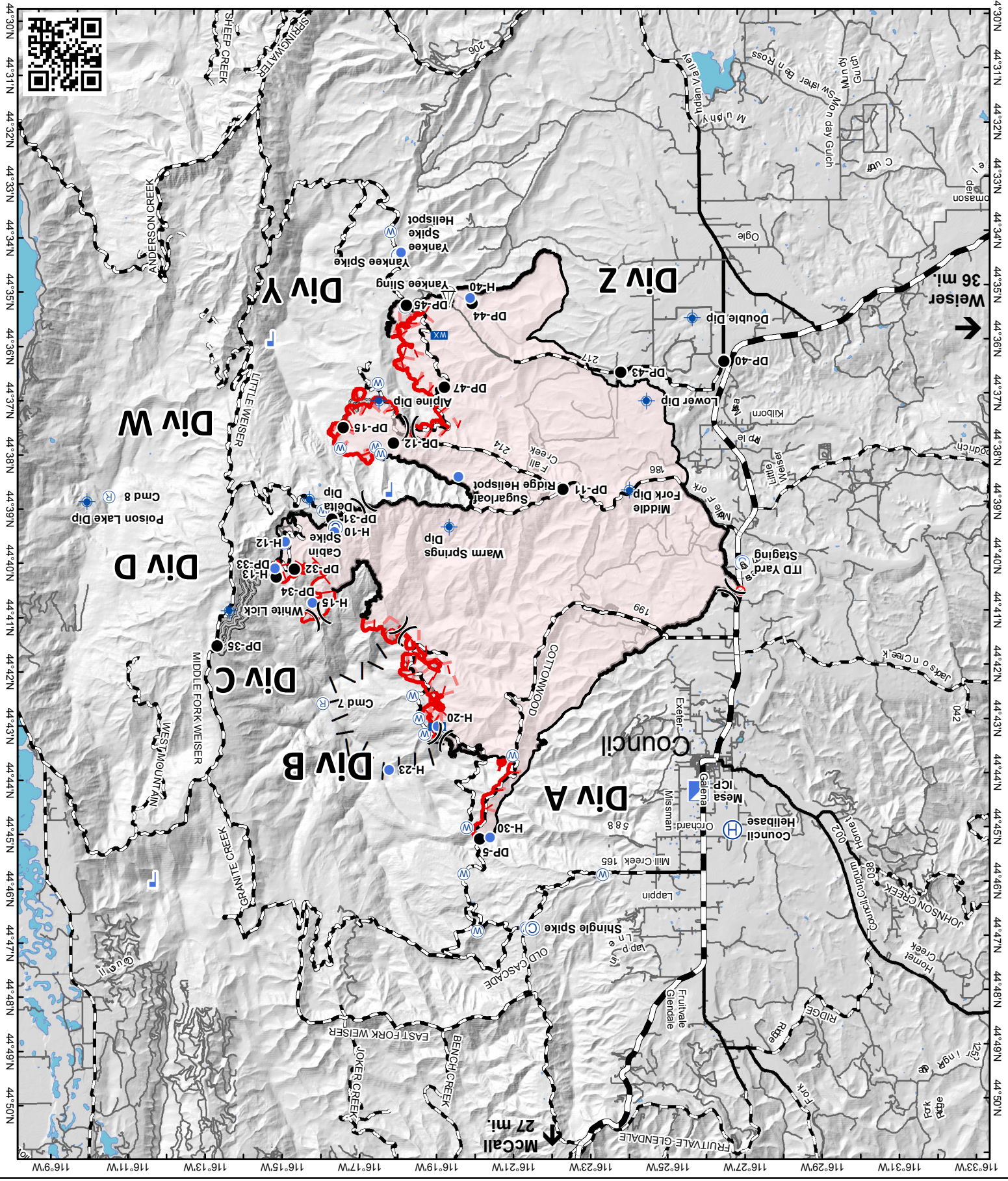


Mesa Fire Transportation Map

August 10, 2018



- Completed Line
- Uncontrolled Fire Edge
- Lake/pond; Reservoir
- Highway
- Fire Polygon
- Access or Unimproved Road
- Gravel
- Paved
- Repeater Site
- Mobile Weather Unit
- Water Source
- Lookout
- Helibase
- ICP
- Fire Origin
- Helispot
- Dip Site
- Staging Area
- Drop Point
- Sling Site
- Camp



NAD83 UTM Z11N

MESA FIRE

ID-PAF-000270

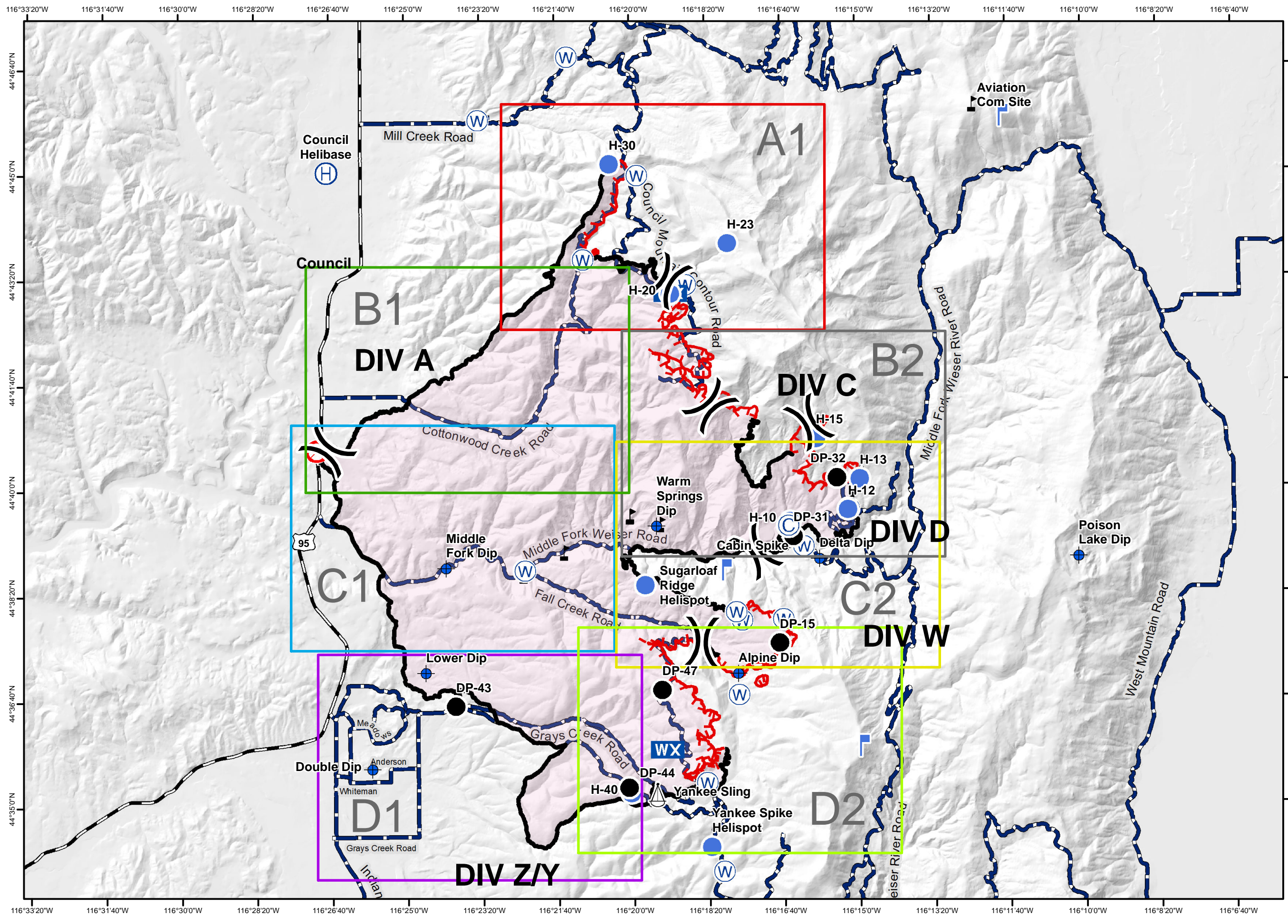
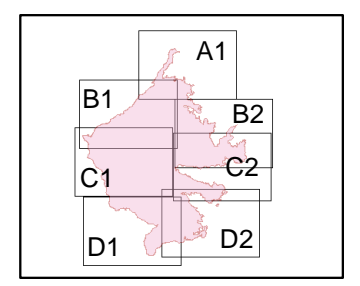
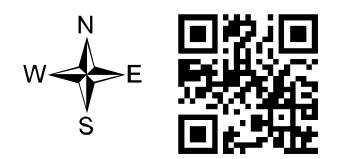
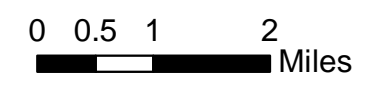
August 10, 2018



IAP MAP

34,022 acres

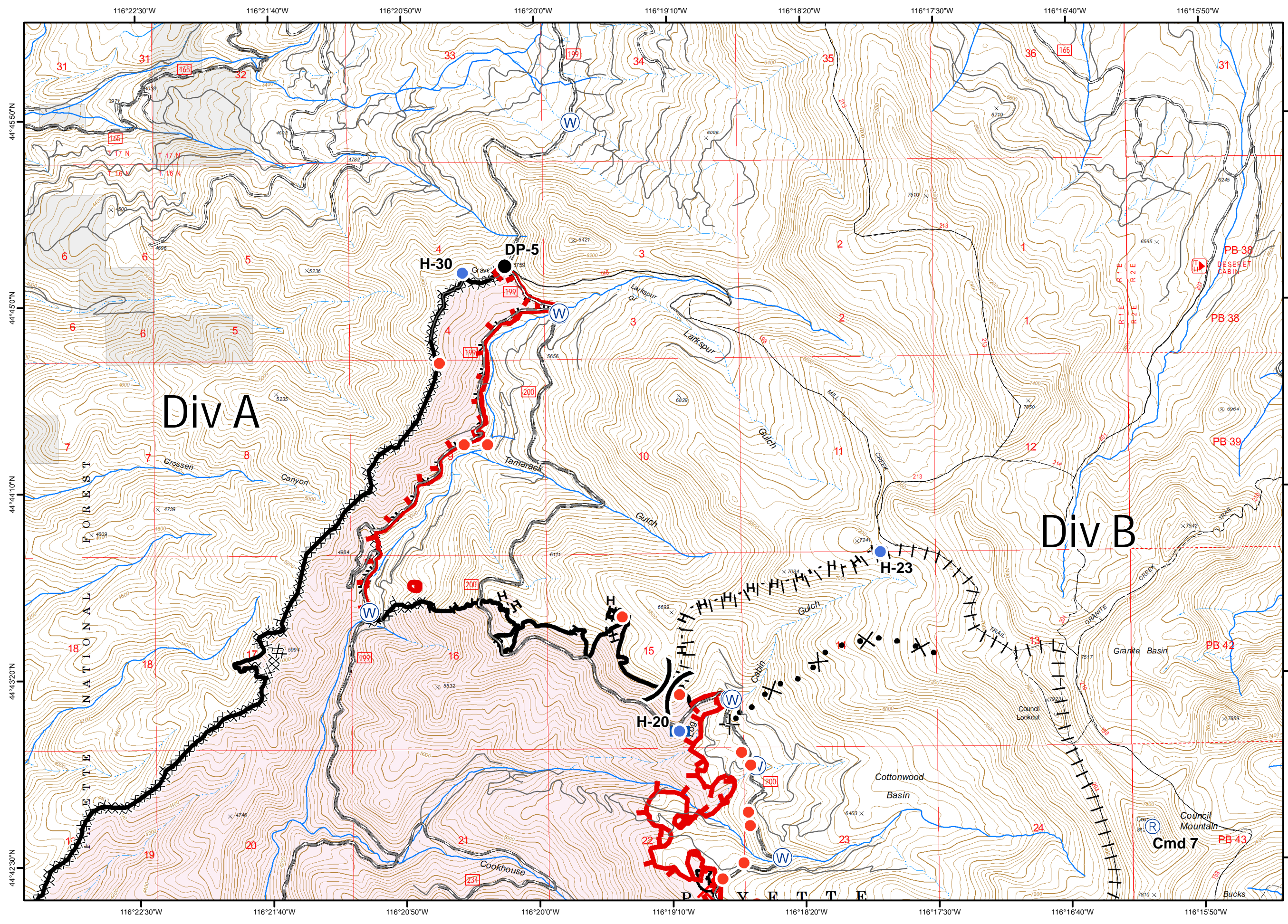
- Safety - Hazards
- Repeater
- Camp
- Staging Area
- Drop Point
- Infrastructure
- Dip Site
- Structures
- Fire Origin
- Division Break
- Water Source
- Lookout
- Recreation Site
- Facilities
- Communication Site
- Helibase
- ICP
- Main Road
- Dozer Opened Road
- Handline
- Completed Line
- Uncontrolled Fire Edge
- Dozer Line
- Fence
- Powerline



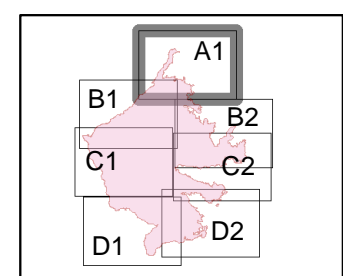
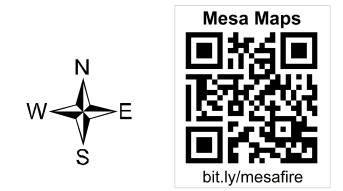
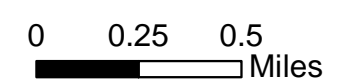
MESA FIRE ID-PAF-000270 August 10, 2018



IAP Tile: A1
34,022 acres



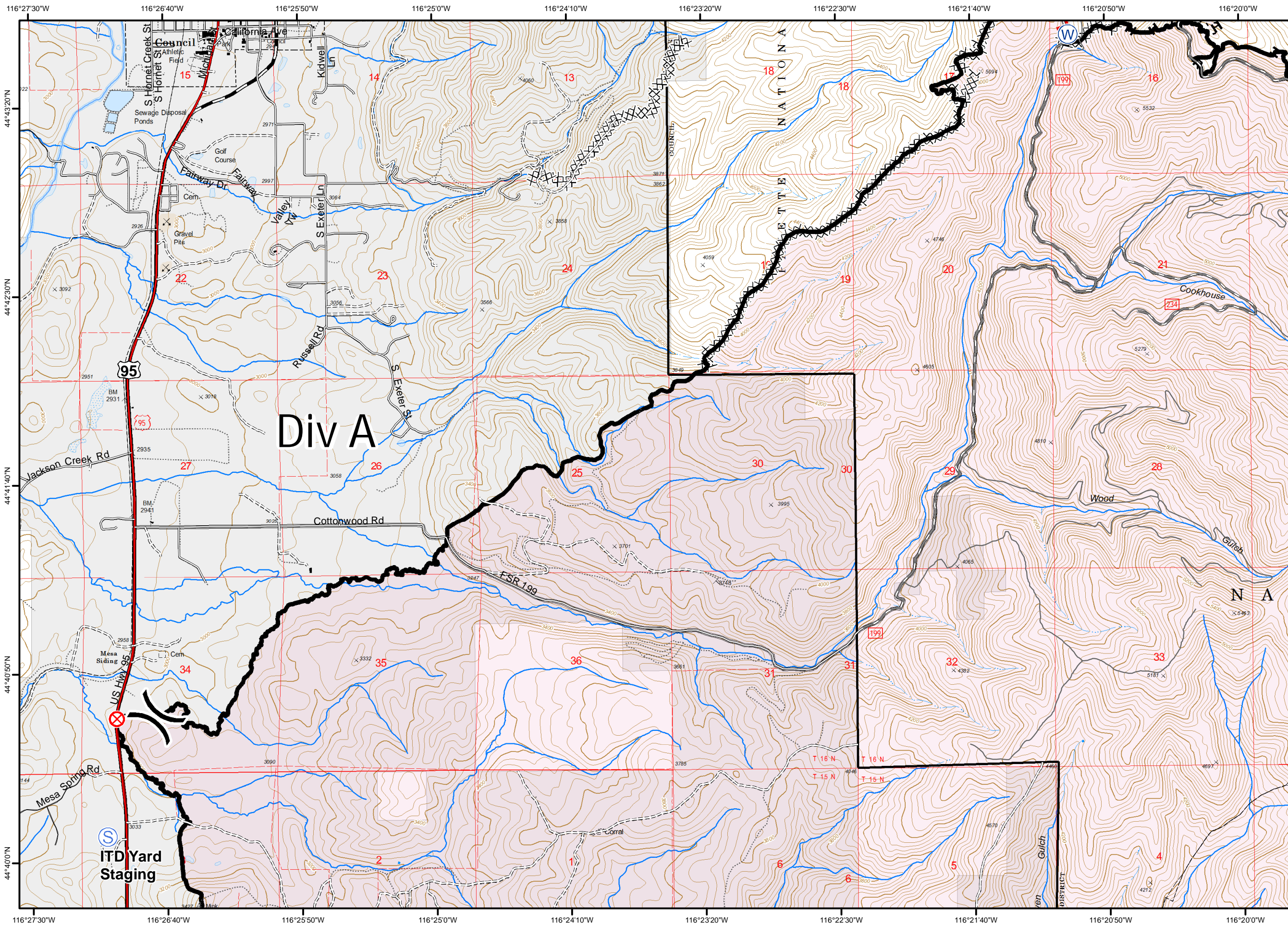
- Helispot
- Drop Point
- Hot Spot
- WX Mobile Weather Unit
- R Repeater
- W Water Source
- Contained
- Uncontrolled
- H - Completed Hand Line
- XXXX Completed Dozer Line
- R - Road as Completed Line
- Proposed Burnout
- | Active Burnout
- X Proposed Dozer Line
- Fire Perimeter
- Private Lands



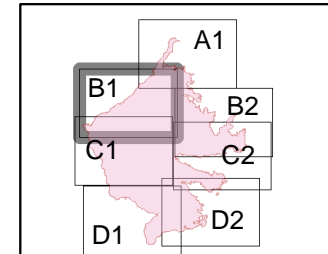
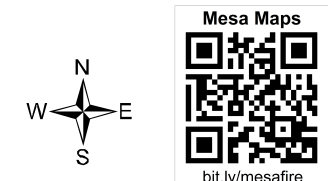
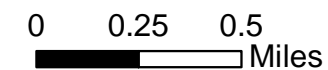
MESA FIRE ID-PAF-000270 August 10, 2018



IAP Tile: B1
34,022 acres



- Fire Origin: July 26, 1911hr
- Contained
- Uncontrolled
- Staging Area
- Completed Hand Line
- Water Source
- Completed Dozer Line
- Road as Completed Line
- Fire Perimeter
- Private Lands

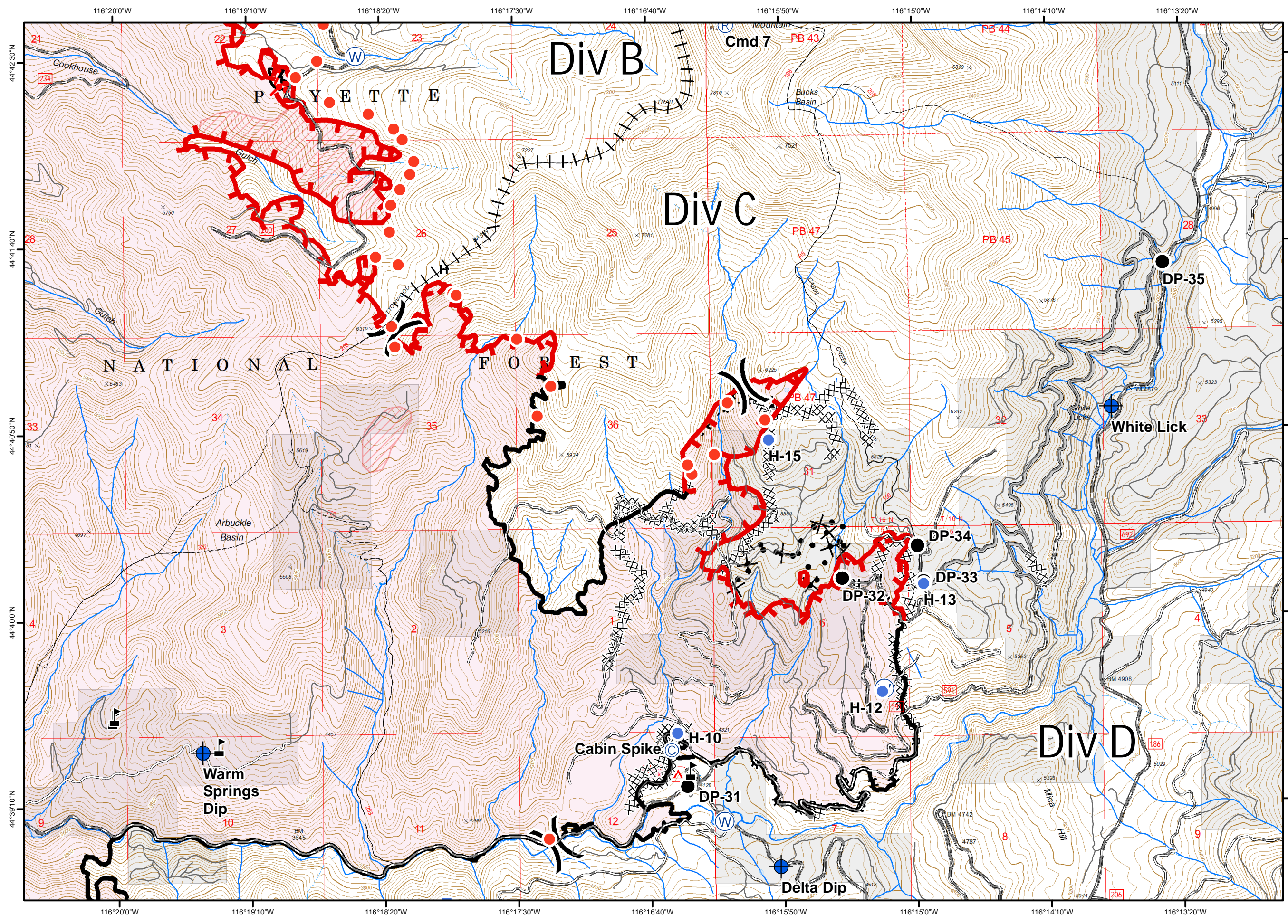
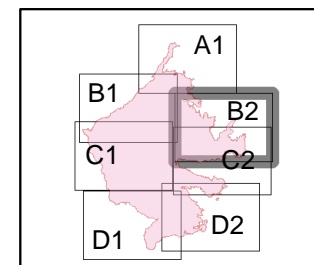
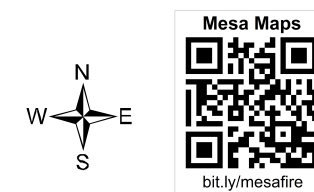
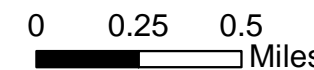


MESA FIRE ID-PAF-000270 August 10, 2018



IAP Tile: B2
34,022 acres

- | | |
|--|--|
| | |
| | |
| | |
| | |
| | |
| | |
| | |
| | |
| | |
| | |
| | |
| | |
| | |



116°20'W 116°19'10"W 116°18'20"W 116°17'30"W 116°16'40"W 116°15'50"W 116°15'0"W 116°14'10"W 116°13'20"W

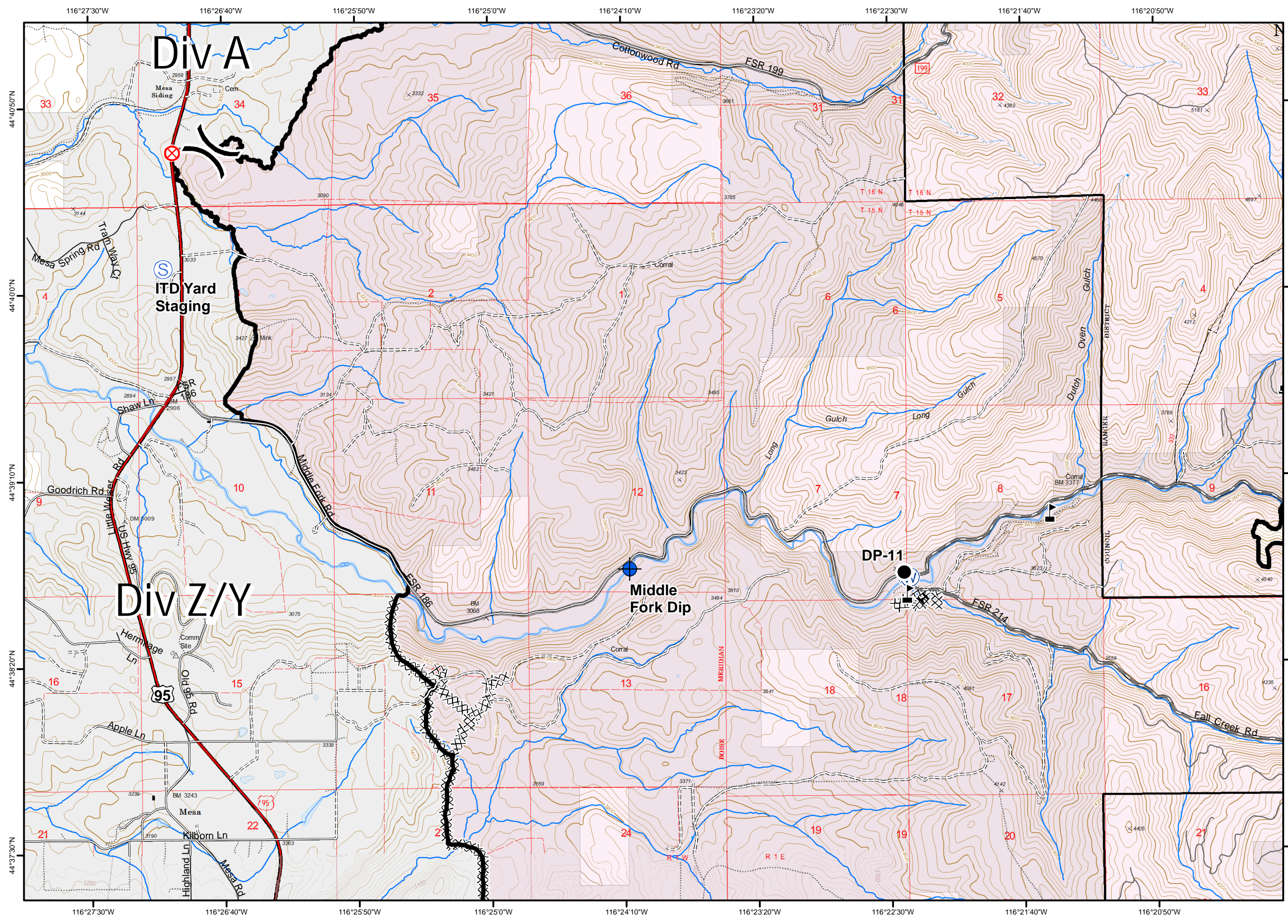
44°42'30"N
44°41'40"N
44°40'50"N
44°40'0"N
44°39'10"N

116°20'W 116°19'10"W 116°18'20"W 116°17'30"W 116°16'40"W 116°15'50"W 116°15'0"W 116°14'10"W 116°13'20"W

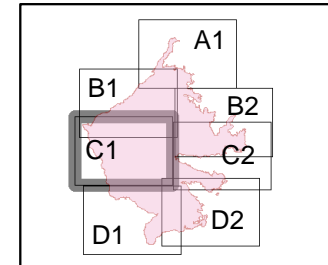
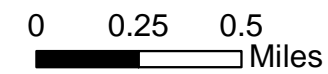
MESA FIRE ID-PAF-000270 August 10, 2018



IAP Tile: C1
34,022 acres



- Dip Site
- Value at Risk
- Drop Point
- Fire Origin: July 26, 1911hr
- Staging Area
- Water Source
- Contained
- Completed Hand Line
- Completed Dozer Line
- Fire Perimeter
- Private Lands

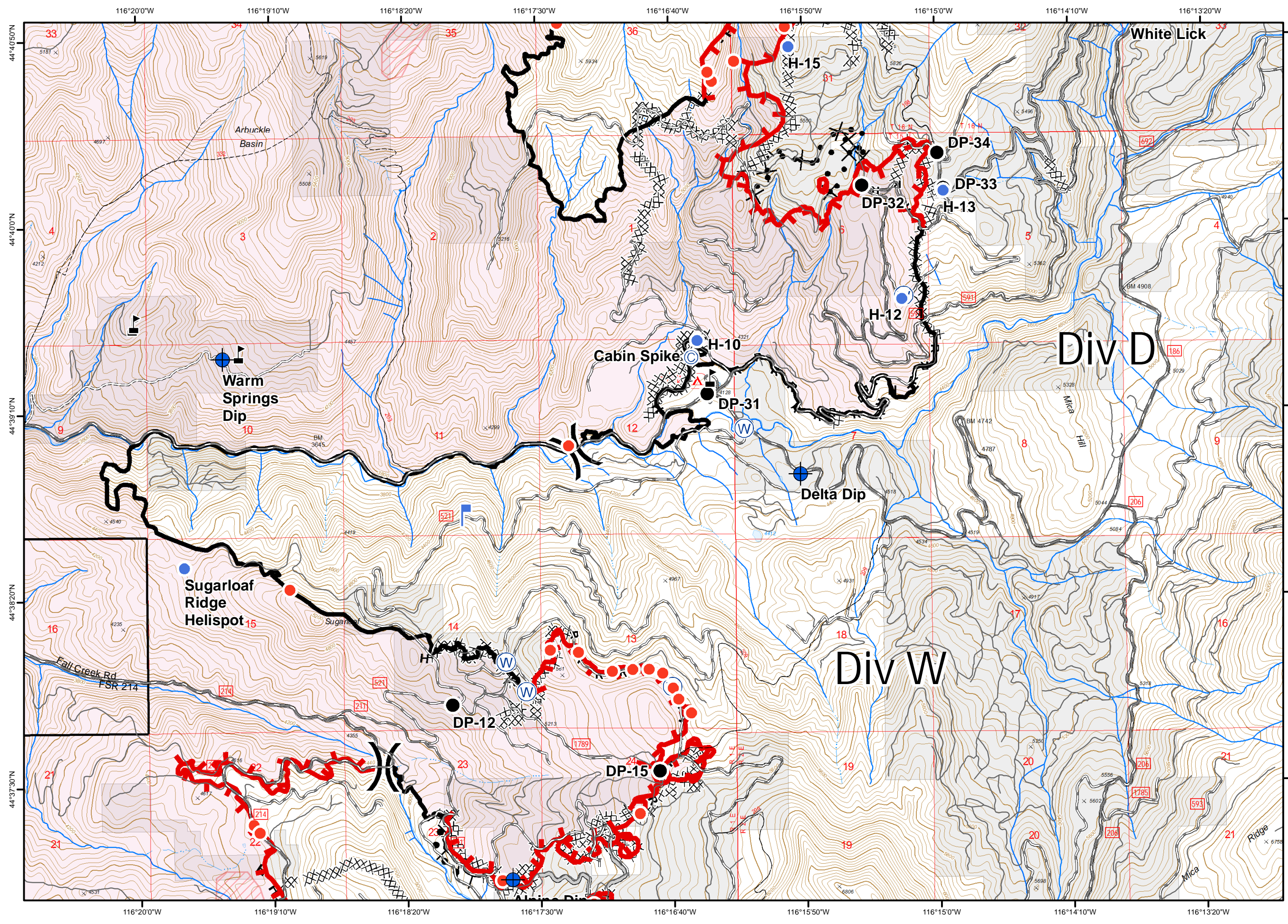
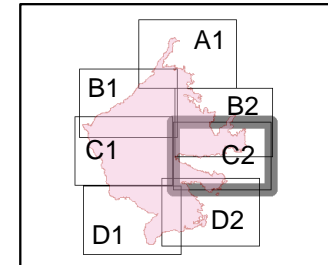
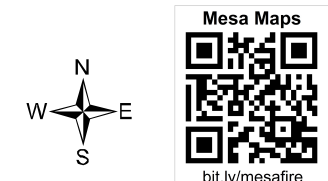
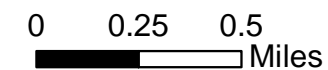


MESA FIRE ID-PAF-000270 August 10, 2018



IAP Tile: C2
34,022 acres

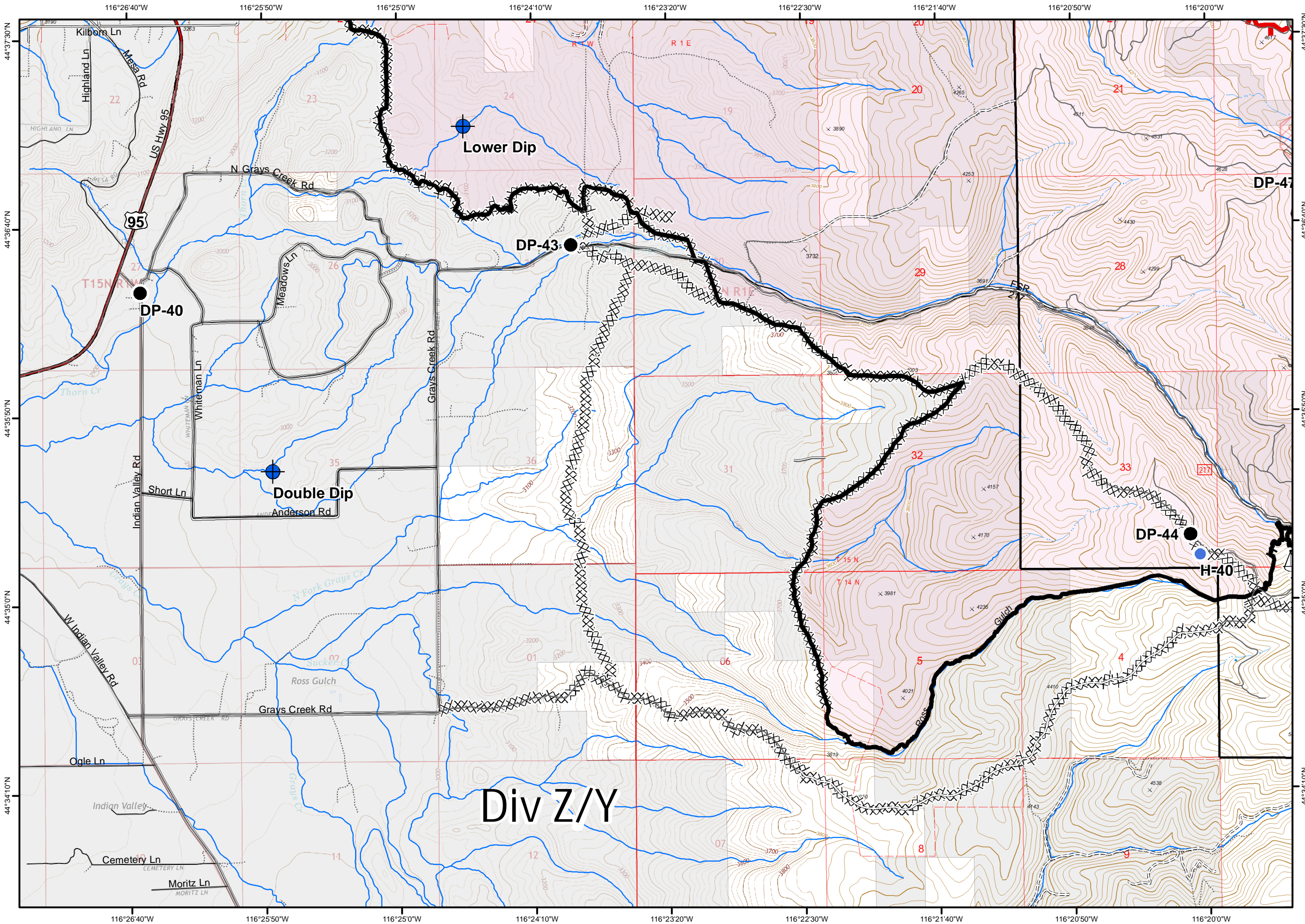
- | | | | |
|--|---------------|--|----------------------------|
| | Camp | | Contained |
| | Dip Site | | Uncontrolled |
| | Value at Risk | | H - Completed Hand Line |
| | Helispot | | Completed Dozer Line |
| | Drop Point | | R - Road as Completed Line |
| | Hot Spot | | Access or Improved Road |
| | Lookout | | Completed Burnout |
| | Water Source | | Proposed Dozer Line |
| | | | IR Intense Heat |
| | | | Fire Perimeter |
| | | | Private Lands |



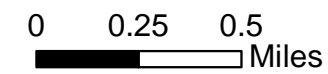
MESA FIRE ID-PAF-000270 August 10, 2018



IAP Tile: D1
34,022 acres

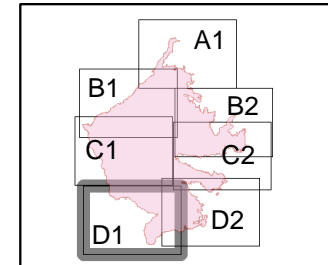


- Dip Site
- Helispot
- Drop Point
- Sling Site
- Contained
- Uncontrolled
- Completed Hand Line
- Completed Dozer Line
- IR Intense Heat
- Fire Perimeter
- Private Lands



Mesa Maps

bit.ly/mesafire



MESA FIRE
 ID-PAF-000270
 August 10, 2018



IAP Tile: D2
 34,022 acres

- Camp
- Dip Site
- Helispot
- Drop Point
- Hot Spot
- Lookout
- Mobile Weather Unit
- Sling Site
- Water Source
- Contained
- Uncontrolled
- Completed Hand Line
- Completed Dozer Line
- Road as Completed Line
- Access or Improved Road
- Completed Burnout
- IR Intense Heat
- Fire Perimeter
- Private Lands

