

# MESA FIRE

## ID-PAF-000270

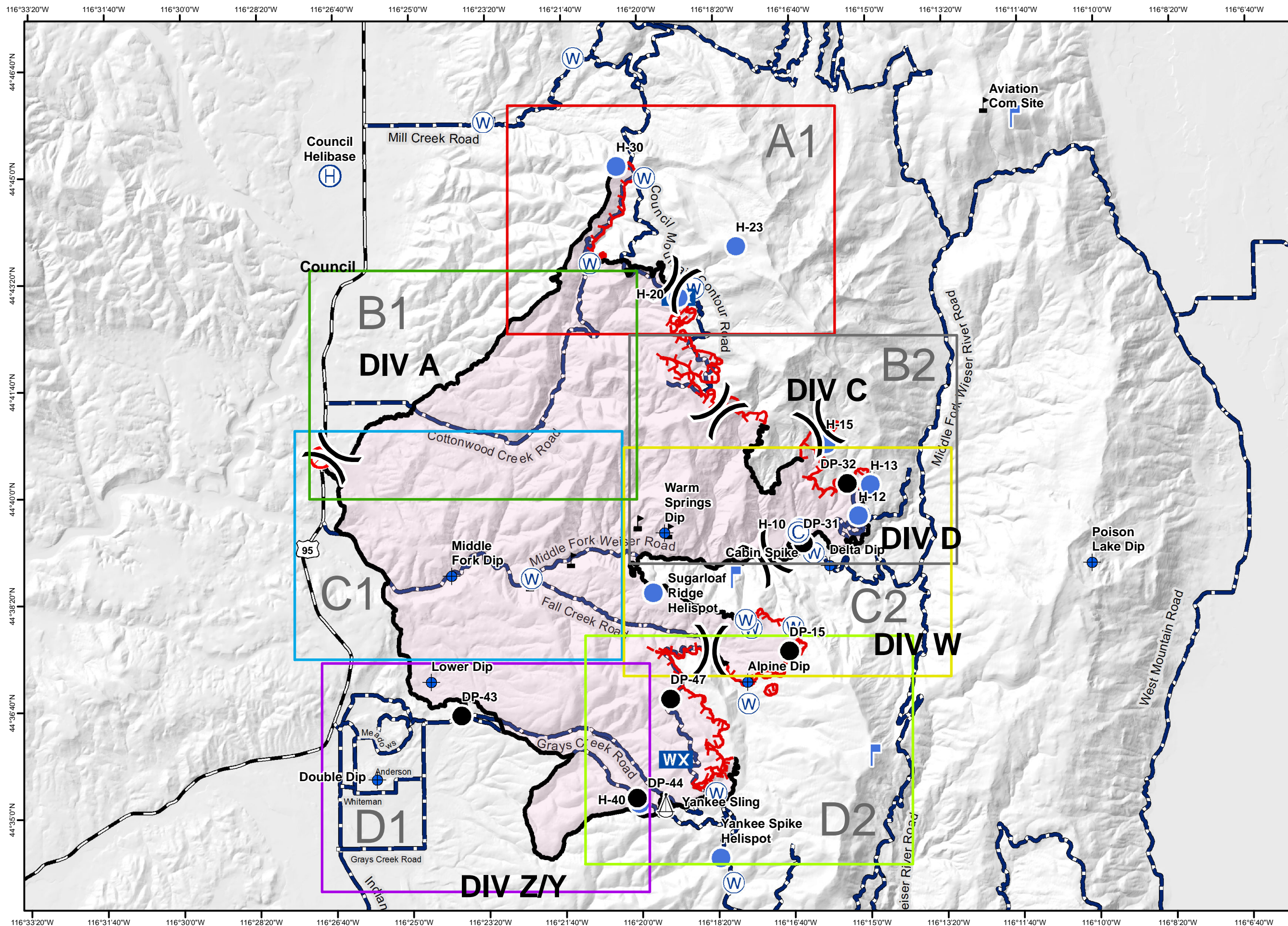
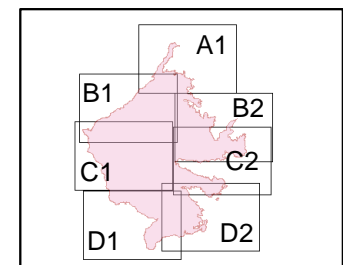
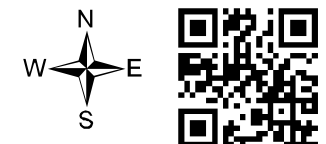
### August 10, 2018



## IAP MAP

34,022 acres

- Safety - Hazards
- Repeater
- Camp
- Staging Area
- Drop Point
- Infrastructure
- Dip Site
- Structures
- Fire Origin
- Division Break
- Water Source
- Lookout
- Recreation Site
- Facilities
- Communication Site
- Helibase
- ICP
- Main Road
- Dozer Opened Road
- Handline
- Completed Line
- Uncontrolled Fire Edge
- Dozer Line
- Fence
- Powerline



116°33'20"W 116°31'40"W 116°30'0"W 116°28'20"W 116°26'40"W 116°25'0"W 116°23'20"W 116°21'40"W 116°20'0"W 116°18'20"W 116°16'40"W 116°15'0"W 116°13'20"W 116°11'40"W 116°10'0"W 116°8'20"W 116°6'40"W

116°33'20"W 116°31'40"W 116°30'0"W 116°28'20"W 116°26'40"W 116°25'0"W 116°23'20"W 116°21'40"W 116°20'0"W 116°18'20"W 116°16'40"W 116°15'0"W 116°13'20"W 116°11'40"W 116°10'0"W 116°8'20"W 116°6'40"W

44°46'40"N  
44°45'0"N  
44°43'20"N  
44°41'40"N  
44°40'0"N  
44°38'20"N  
44°36'40"N  
44°35'0"N

44°46'40"N  
44°45'0"N  
44°43'20"N  
44°41'40"N  
44°40'0"N  
44°38'20"N  
44°36'40"N  
44°35'0"N