

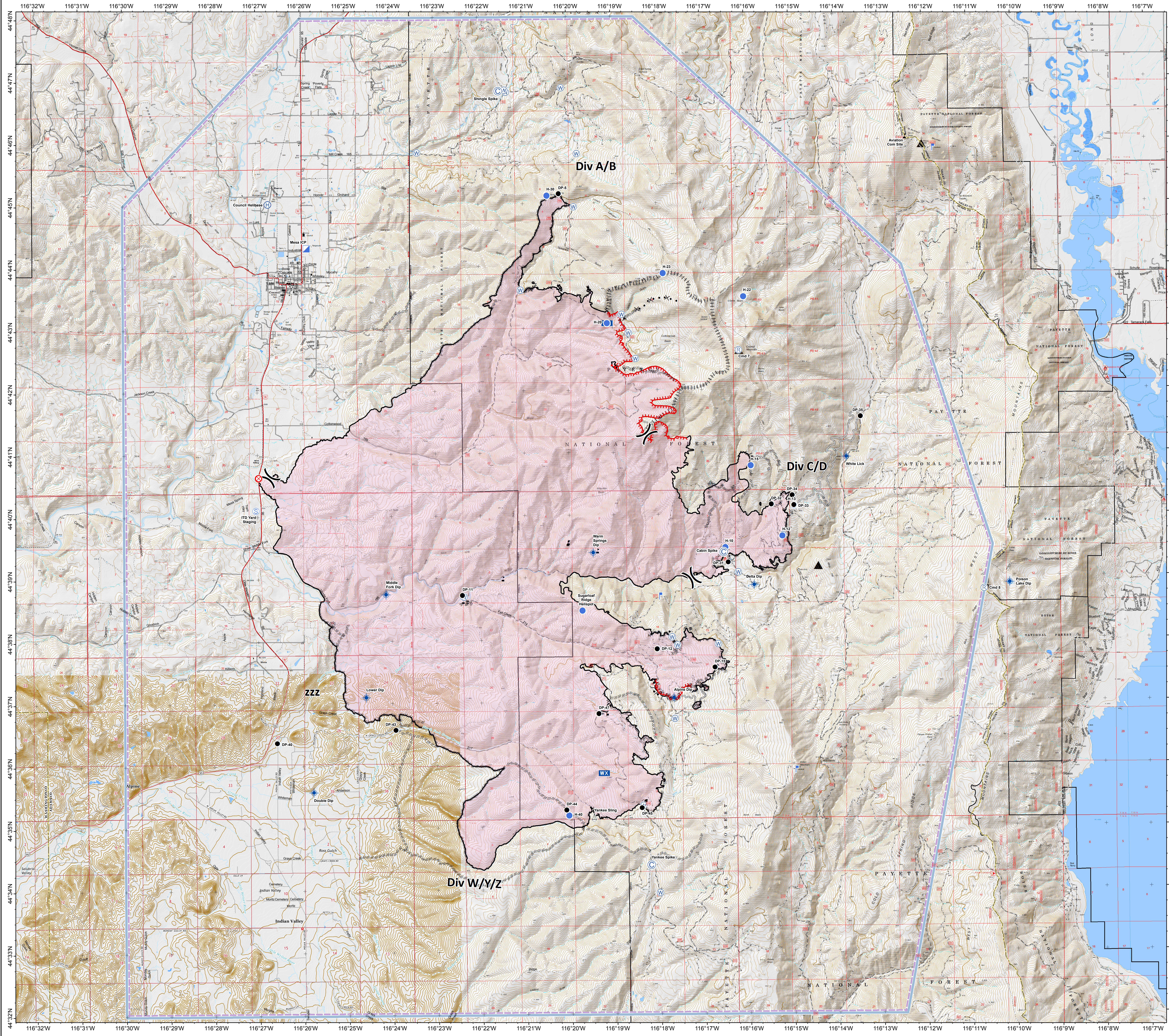
Mesa Fire

ID-PAF-000270

AirOps and Communication

August 14, 2018

34,700 GIS Acres



Legend

- Camp
- Dip Site
- Drop Point
- Fire Origin
- Helibase
- Incident Command Post
- Lookout
- Mobile Weather Unit
- Repeater
- Sling Site
- Staging Area
- Water Source
- Value at Risk
- Division Break
- Completed Line
- Uncontrolled Fire Edge
- Completed Dozer Line
- Completed Hand Line
- R - R Road as Completed Line
- Access or Improved Road
- Proposed Burnout
- Active Burnout
- Completed Burnout
- Proposed Dozer Line
- Temporary Flight Restriction
- Summit

0 0.5 1 1.5 2 Miles



Name	Latitude	Longitude
Camp		
Cabin Spike	44° 39.406'	-116° 16.538'
Shingle Spike	44° 46.821'	-116° 21.535'
Yankee Spike	44° 34.395'	-116° 18.217'
Dip Site		
Alpine Dip	44° 37.077'	-116° 17.681'
Delta Dip	44° 38.867'	-116° 15.862'
Double Dip	44° 35.587'	-116° 25.781'
Lower Dip	44° 37.110'	-116° 24.591'
Middle Fork Dip	44° 38.767'	-116° 24.131'
Poison Lake Dip	44° 38.890'	-116° 10.121'
Warm Springs Dip	44° 39.410'	-116° 19.471'
White Lick	44° 40.925'	-116° 13.768'
Drop Point		
DP-11	44° 38.739'	-116° 22.414'
DP-12	44° 37.867'	-116° 18.049'
DP-15	44° 37.559'	-116° 16.756'
DP-23	44° 39.242'	-116° 26.489'
DP-33	44° 40.166'	-116° 15.462'
DP-33	44° 40.153'	-116° 14.953'
DP-34	44° 40.311'	-116° 14.989'
DP-35	44° 41.568'	-116° 13.439'
DP-40	44° 36.383'	-116° 26.596'
DP-43	44° 36.583'	-116° 23.931'
DP-44	44° 35.385'	-116° 20.169'
DP-45	44° 35.313'	-116° 18.417'
DP-47	44° 36.828'	-116° 19.370'
DP-5	44° 45.170'	-116° 20.192'
Helibase		
Council Helibase	44° 45.027'	-116° 26.735'
Helipoint		
H-10	44° 39.480'	-116° 16.501'
H-12	44° 39.667'	-116° 15.218'
H-13	44° 40.142'	-116° 14.953'
H-15	44° 40.788'	-116° 15.915'
H-20	44° 43.087'	-116° 19.122'
H-22	44° 43.501'	-116° 16.052'
H-23	44° 43.882'	-116° 17.855'
H-30	44° 45.141'	-116° 20.458'
H-40	44° 35.197'	-116° 20.053'
Sugarloaf Ridge Helipoint	44° 38.480'	-116° 19.719'
Lookout		
L-1	44° 45.867'	-116° 11.773'
L-2	44° 35.913'	-116° 14.951'
L-3	44° 38.708'	-116° 17.975'
Mobile Weather Unit		
MWU-1	44° 35.871'	-116° 19.266'
MWU-2	44° 43.087'	-116° 19.122'
Repeater		
Cmd 7	44° 42.643'	-116° 16.165'
Cmd 8	44° 38.794'	-116° 10.693'
Sling Site		
Yankee Sling	44° 35.164'	-116° 19.496'
Staging Area		
ITD Yard Staging	44° 40.114'	-116° 27.099'
Value at Risk		
V-1	44° 38.641'	-116° 22.390'
V-2	44° 39.563'	-116° 20.029'
V-3	44° 38.999'	-116° 21.495'
V-4	44° 38.976'	-116° 20.009'
V-5	44° 39.436'	-116° 19.365'
V-6	44° 39.314'	-116° 16.417'
Aviation Com Site	44° 46.051'	-116° 12.383'