

Mesa Fire
Transportation Map
 ID-PAF-000270

August 13, 2018
 Time: 1720

- Completed Line
- Paved Road
- Uncontrolled Fire Edge
- Gravel
- Lake/Pond; Reservoir
- Improved
- Fire Polygon
- Native Material
- Other Roads

N
 0 0.5 1 2 3 Miles

MESA FIRE

ID-PAF-000270

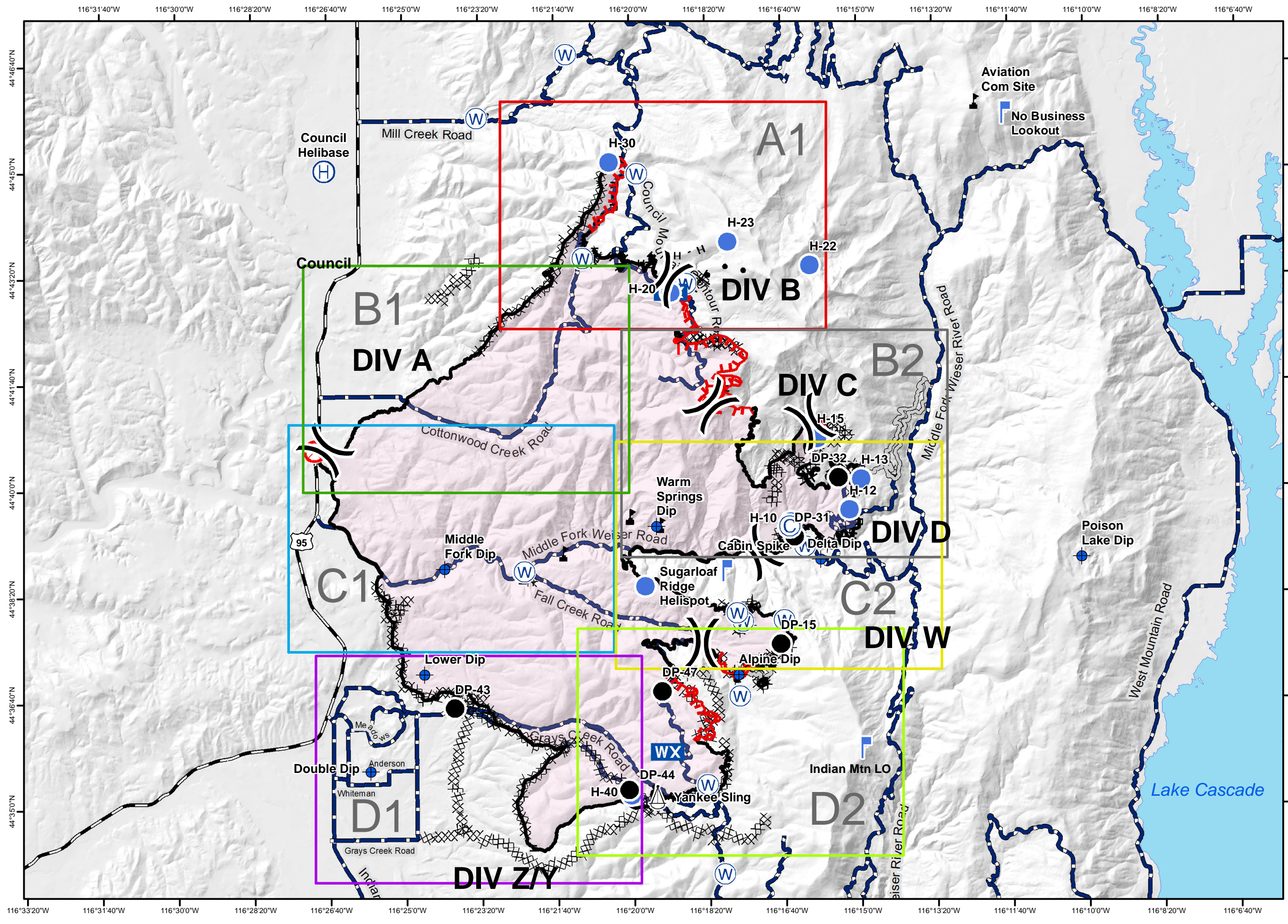
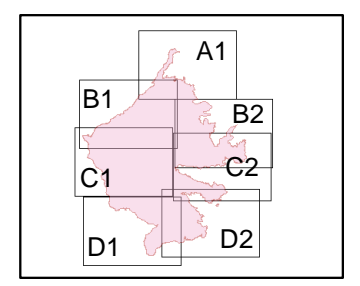
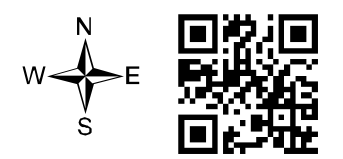
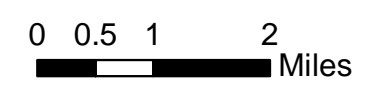
August 13, 2018



IAP MAP

34,700 acres

- Camp
- Dip Site
- Drop Point
- Fire Origin
- Helibase
- Helispot
- Lookout
- Mobile Weather Unit
- Sling Site
- Water Source
- Value at Risk
- Unknown
- Division Break
- Contained
- Uncontrolled
- Completed Dozer Line
- Completed Hand Line
- Road as Completed Line
- Access or Improved Road
- Active Burnout
- Completed Burnout
- Proposed Dozer Line
- Division Break



116°31'40"W 116°30'0"W 116°28'20"W 116°26'40"W 116°25'0"W 116°23'20"W 116°21'40"W 116°20'0"W 116°18'20"W 116°16'40"W 116°15'0"W 116°13'20"W 116°11'40"W 116°10'0"W 116°8'20"W 116°6'40"W

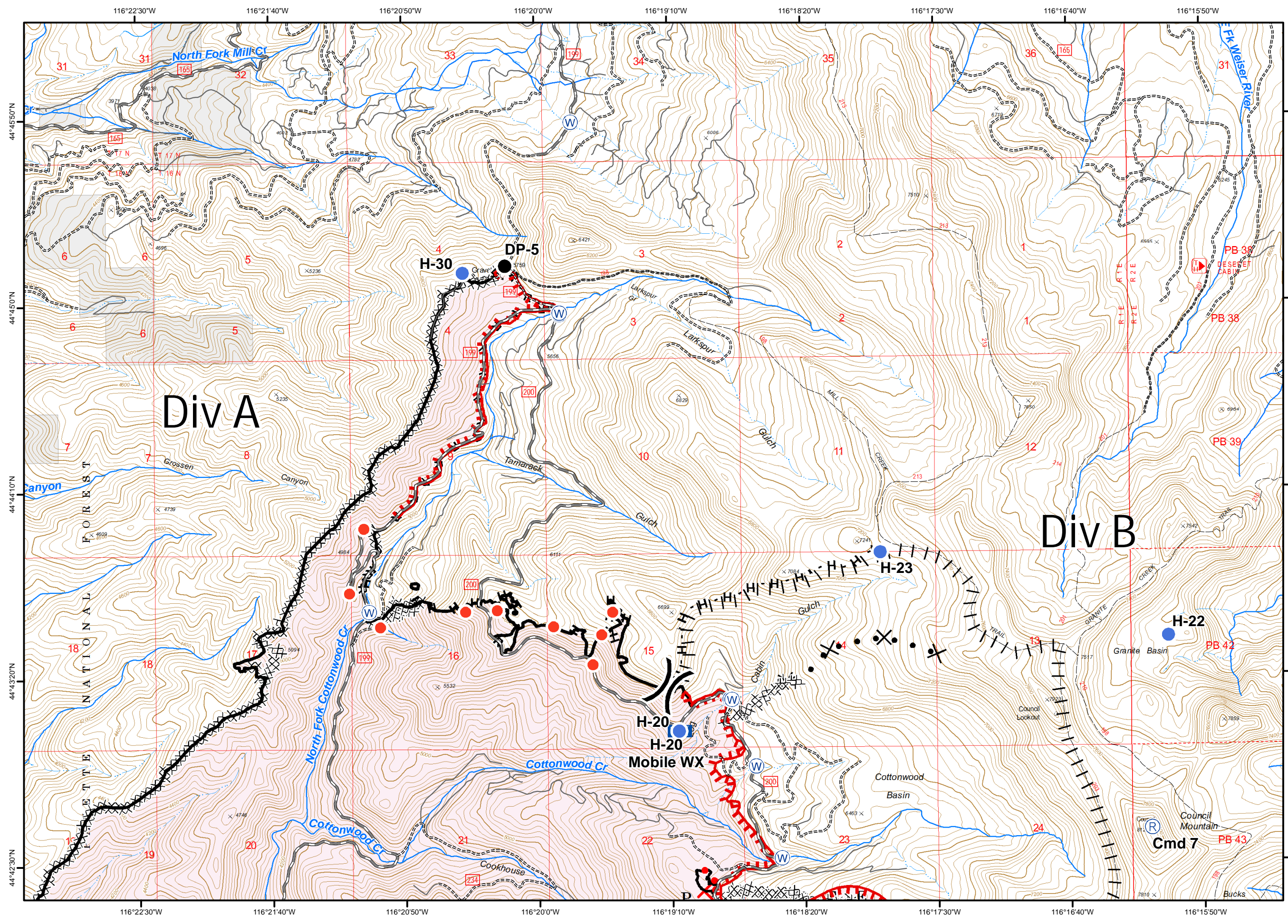
44°46'40"N
44°45'0"N
44°43'20"N
44°41'40"N
44°40'0"N
44°38'20"N
44°36'40"N
44°35'0"N

116°33'20"W 116°31'40"W 116°30'0"W 116°28'20"W 116°26'40"W 116°25'0"W 116°23'20"W 116°21'40"W 116°20'0"W 116°18'20"W 116°16'40"W 116°15'0"W 116°13'20"W 116°11'40"W 116°10'0"W 116°8'20"W 116°6'40"W

MESA FIRE ID-PAF-000270 August 13, 2018

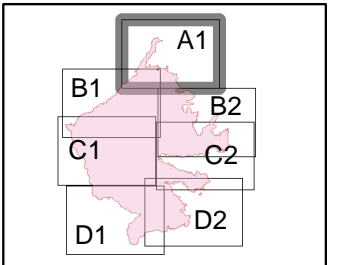
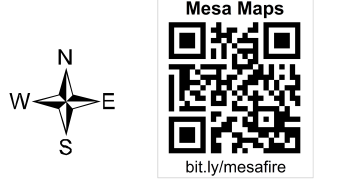
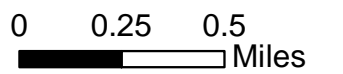


IAP Tile: A1
34,700 acres



- Helispot
- Drop Point
- Hot Spot
- WX Mobile Weather Unit
- R Repeater
- W Water Source
- Contained
- Uncontrolled
- H** Completed Hand Line
- Completed Dozer Line
- R** Road as Completed Line
- Proposed Burnout
- Active Burnout
- Proposed Dozer Line
- Fire Perimeter
- Private Lands

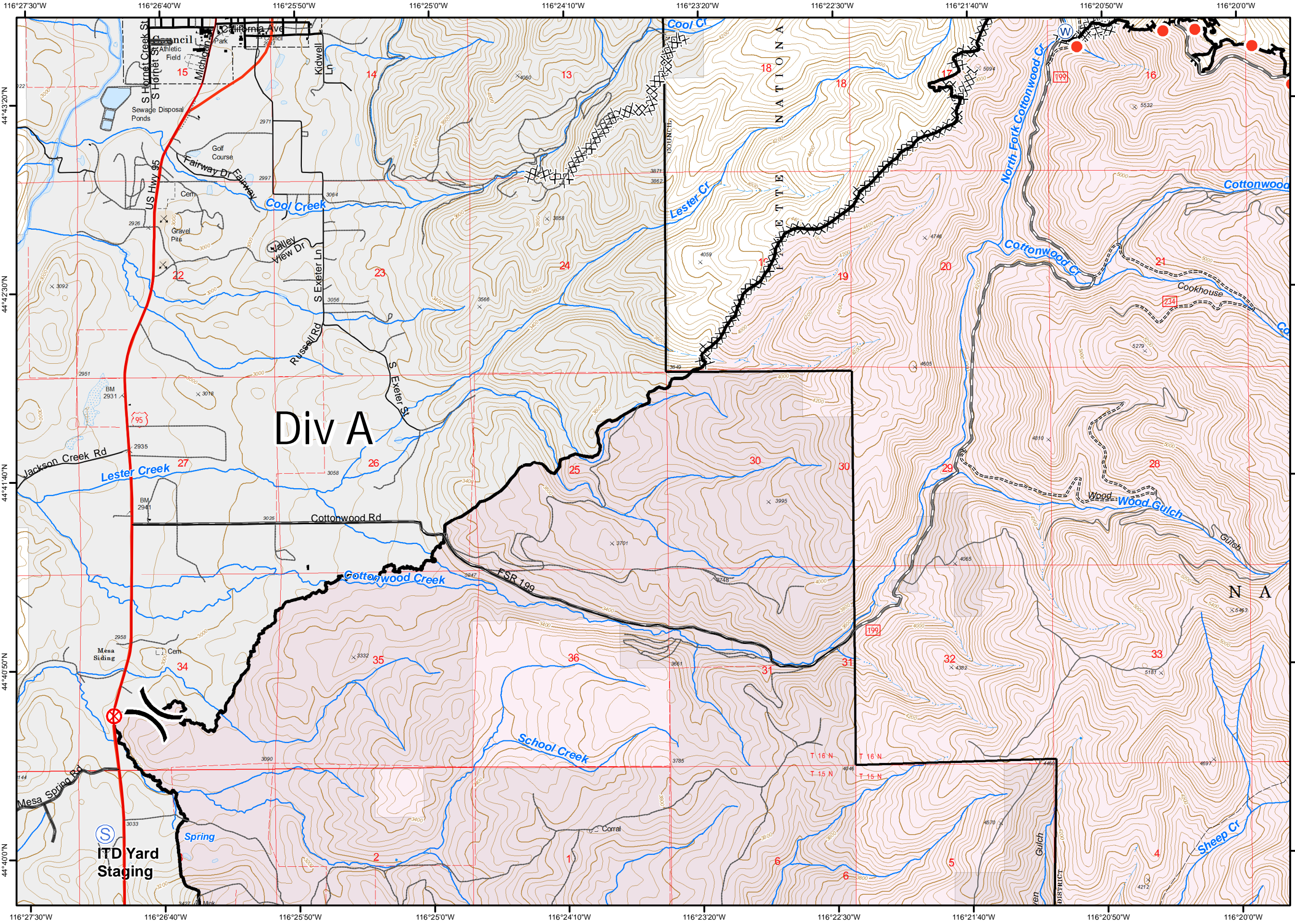
- Road Surface or Type**
- Highway
 - Paved
 - Gravel Surface
 - Improved Native Material
 - Federal System Roads
 - State Roads
 - Other Roads
 - Division Break



MESA FIRE ID-PAF-000270 August 13, 2018

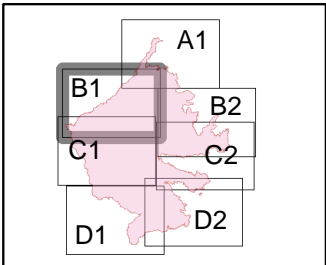
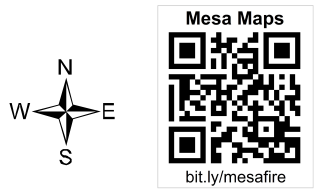
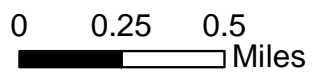


IAP Tile: B1
34,700 acres



- Fire Origin: July 26, 1911hr
- Hot Spot
- Staging Area
- Water Source
- Contained
- H - Completed Hand Line
- Completed Dozer Line
- R - Road as Completed Line
- Fire Perimeter
- Private Lands

- Road Surface or Type**
- Highway
 - Paved
 - Gravel Surface
 - Improved Native Material
 - Federal System Roads
 - State Roads
 - Other Roads
 - Division Break



MESA FIRE ID-PAF-000270 August 13, 2018

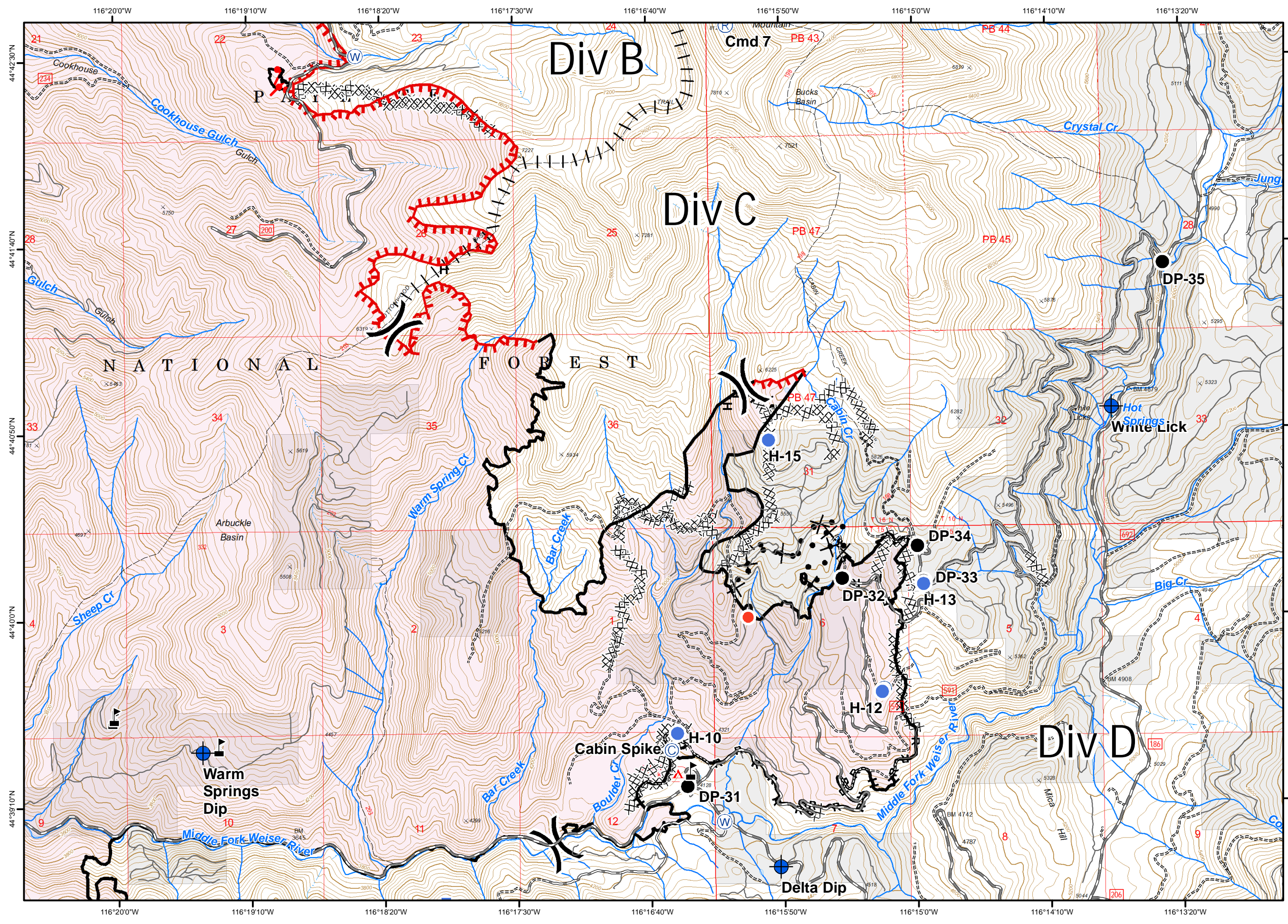
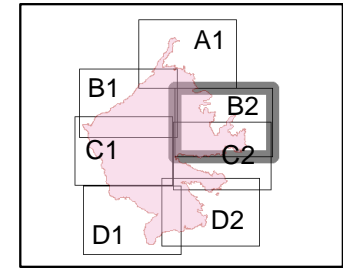
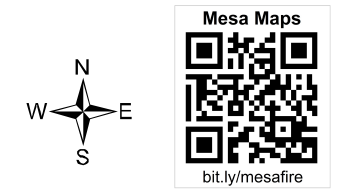
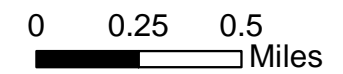


IAP Tile: B2

34,700 acres

- Camp
- Dip Site
- Value at Risk
- Helispot
- Drop Point
- Hot Spot
- Repeater
- Water Source
- Contained
- Uncontrolled
- Completed Hand Line
- Completed Dozer Line
- Road as Completed Line
- Access or Improved Road
- Proposed Burnout
- Active Burnout
- Completed Burnout
- Proposed Dozer Line
- Fire Perimeter
- Private Lands

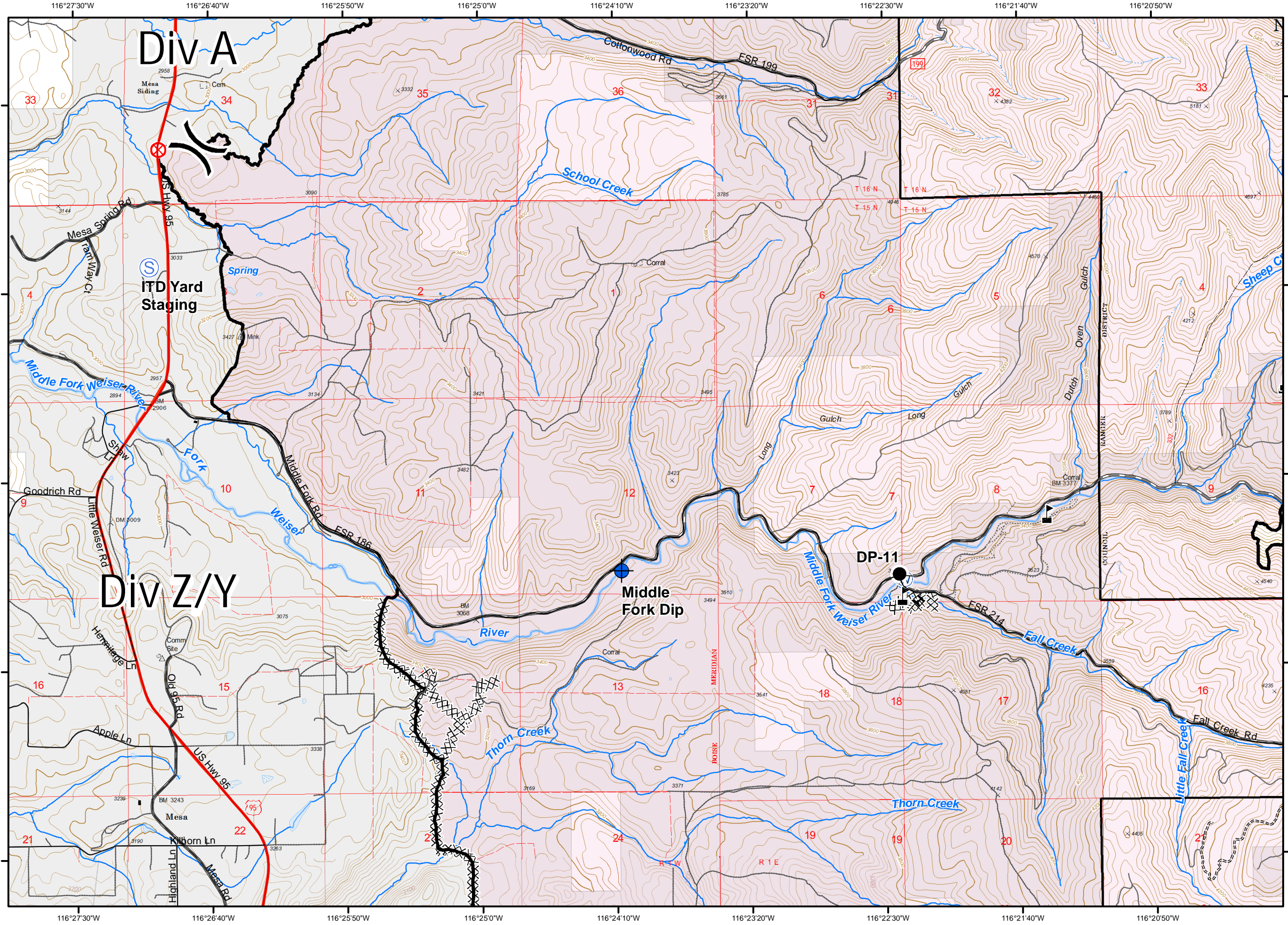
- ### Road Surface or Type
- Highway
 - Paved
 - Gravel Surface
 - Improved Native Material
 - Federal System Roads
 - State Roads
 - Other Roads
 - Division Break



MESA FIRE
ID-PAF-000270
August 13, 2018

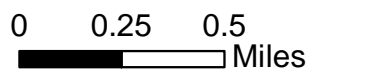


IAP Tile: C1
 34,700 acres



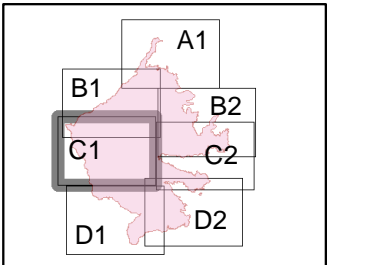
- Dip Site
- Value at Risk
- Drop Point
- Fire Origin: July 26, 1911hr
- Staging Area
- Water Source
- Contained
- H - Completed Hand Line
- Completed Dozer Line
- Fire Perimeter
- Private Lands

- Road Surface or Type**
- Highway
 - Paved
 - Gravel Surface
 - Improved Native Material
 - Federal System Roads
 - State Roads
 - Other Roads
 - Division Break



Mesa Maps

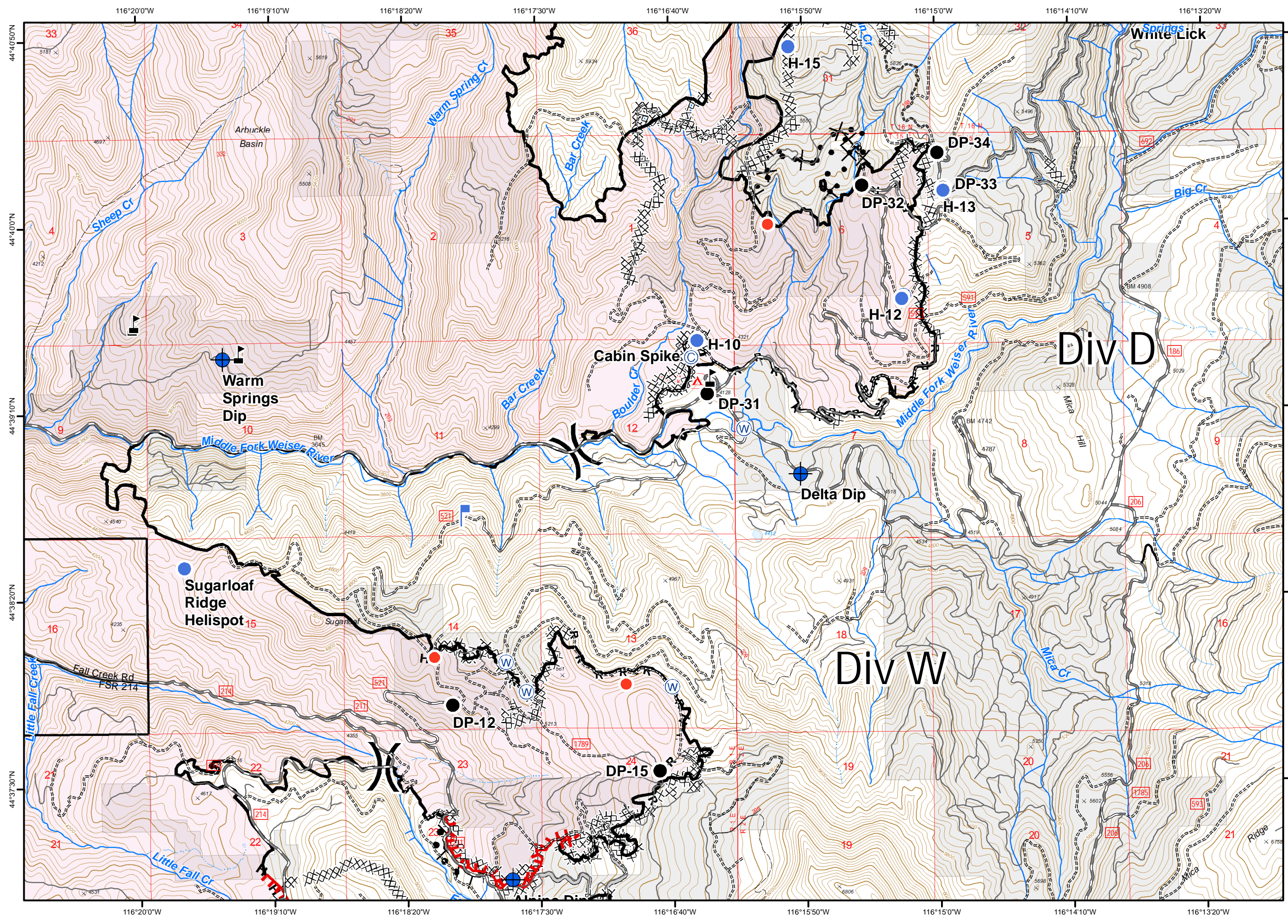
bit.ly/mesafire



MESA FIRE ID-PAF-000270 August 13, 2018

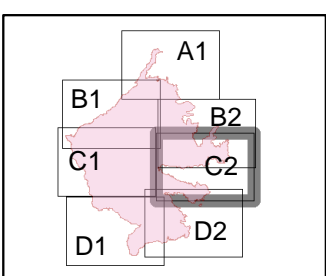
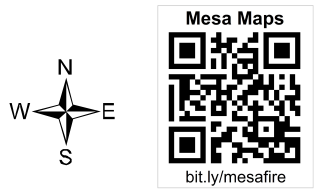
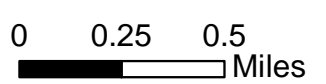


IAP Tile: C2
34,700 acres



- Camp
- Dip Site
- Value at Risk
- Helispot
- Drop Point
- Hot Spot
- Lookout
- Water Source
- Proposed Dozer Line
- Contained
- Uncontrolled
- Completed Hand Line
- Completed Dozer Line
- Road as Completed Line
- Access or Improved Road
- Completed Burnout
- Fire Perimeter
- Private Lands

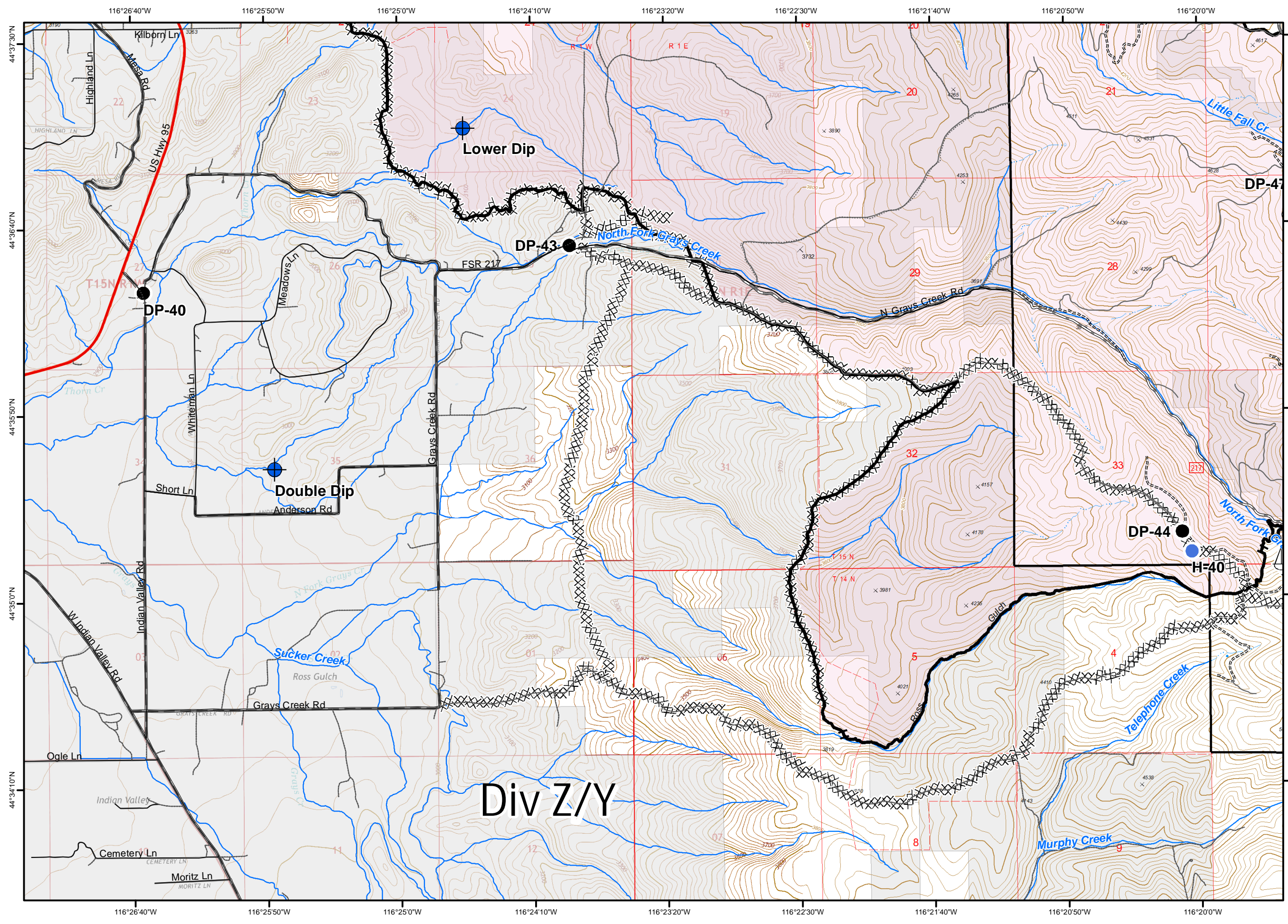
- Road Surface or Type**
- Highway
 - Paved
 - Gravel Surface
 - Improved Native Material
 - Federal System Roads
 - State Roads
 - Other Roads
 - Division Break



MESA FIRE ID-PAF-000270 August 13, 2018

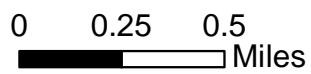


IAP Tile: D1
34,700 acres



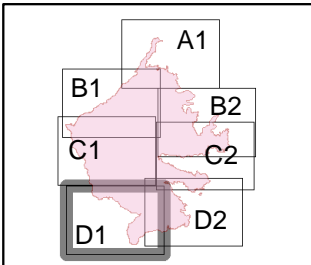
- Dip Site
- Helispot
- Drop Point
- Sling Site
- Contained
- Completed Hand Line
- Completed Dozer Line
- Fire Perimeter
- Private Lands

- Road Surface or Type**
- Highway
 - Paved
 - Gravel Surface
 - Improved Native Material
 - Federal System Roads
 - State Roads
 - Other Roads
 - Division Break



Mesa Maps

bit.ly/mesafire

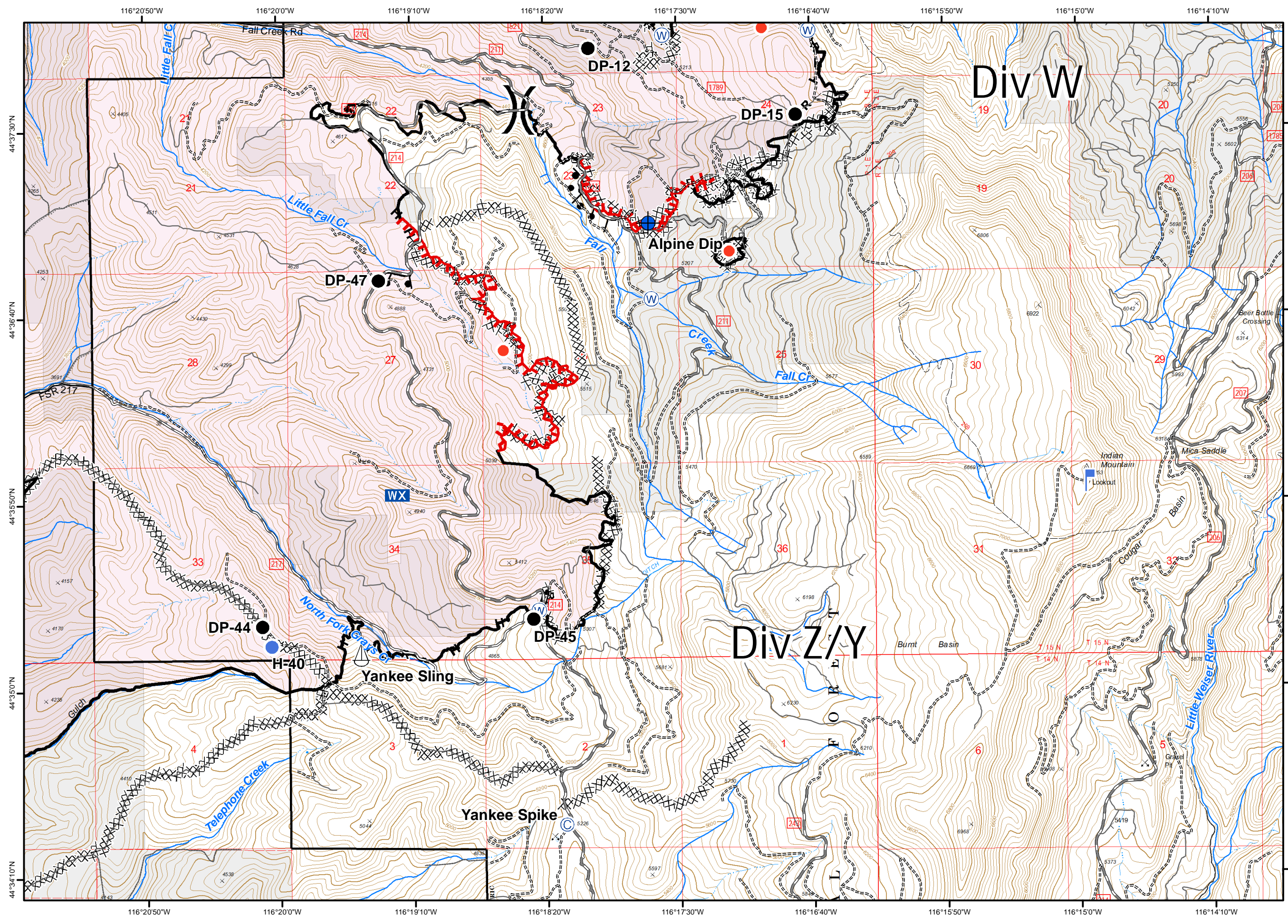


Div Z/Y

MESA FIRE
 ID-PAF-000270
 August 13, 2018

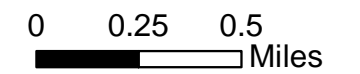


IAP Tile: D2
 34,700 acres



- Camp
- Dip Site
- Helispot
- Drop Point
- Hot Spot
- Lookout
- Mobile Weather Unit
- Sling Site
- Water Source
- Contained
- Uncontrolled
- Completed Hand Line
- Completed Dozer Line
- Road as Completed Line
- Access or Improved Road
- Completed Burnout
- Fire Perimeter
- Private Lands

- Road Surface or Type**
- Highway
 - Paved
 - Gravel Surface
 - Improved Native Material
 - Federal System Roads
 - State Roads
 - Other Roads
 - Division Break



Mesa Maps

bit.ly/mesafire

