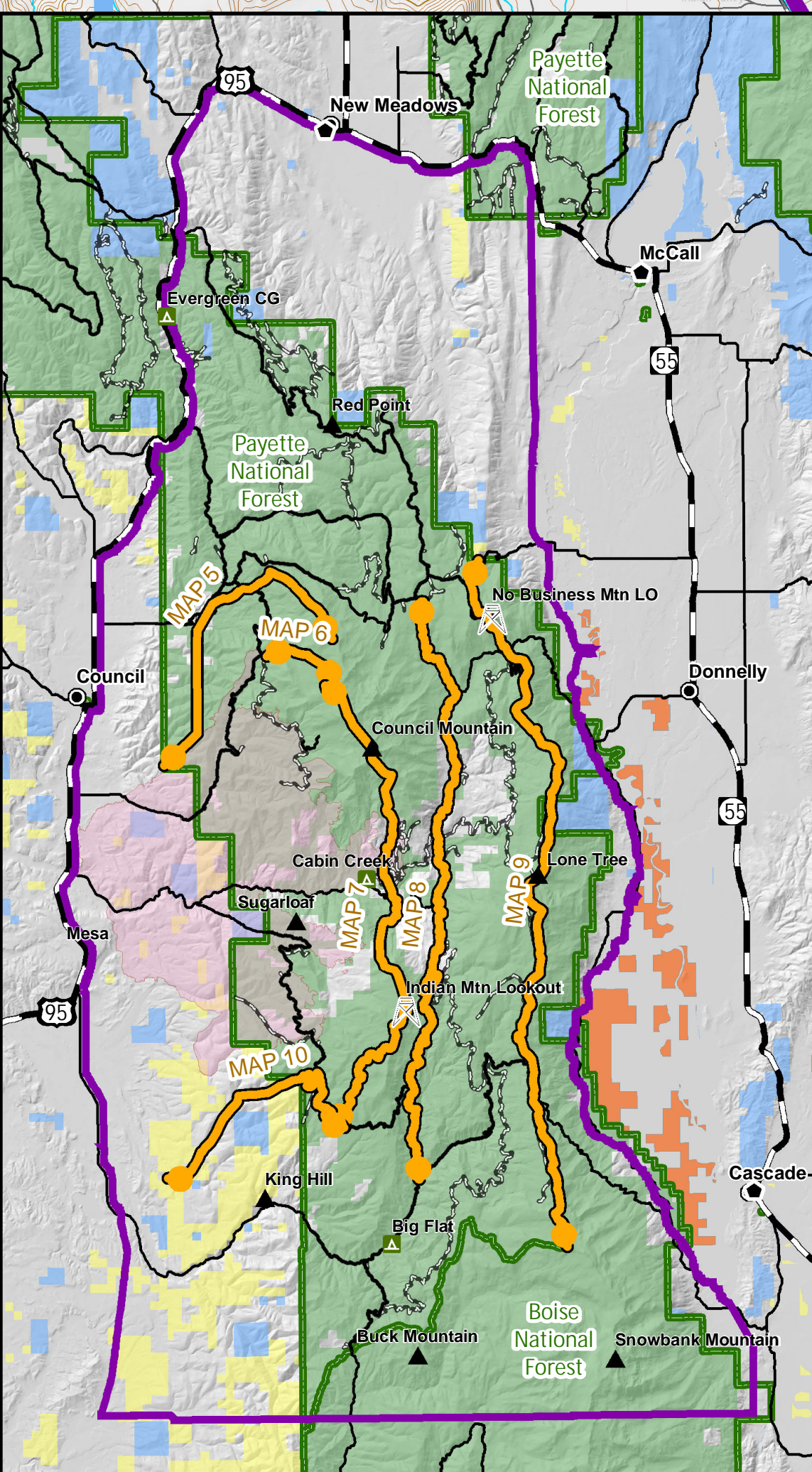


Northridge 2010

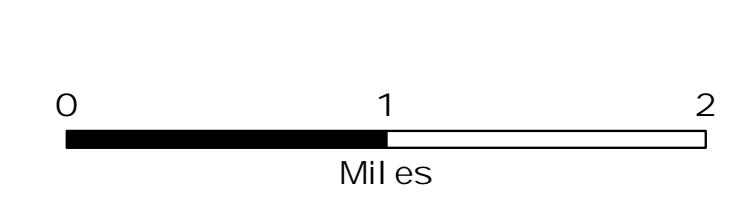
Div A/B

Div Y/Z



Situation

Mesa Fire
 ID-PAF-000270
 August 16, 2018
 34,719 acres
 IR August 14 @ 1800 hrs



• Structure	— Gate	⚡ Lookout	⚙ Pump	— Completed Line	⚠ Active Burnout	— Highway	📍 Planning Area	📅 Fire History	🏠 Ownership
⊙ Camp	Ⓜ Helibase	📡 Mobile Weather Unit	🚰 Pumpkin	— Uncontrolled Fire Edge	— Completed Burnout	— Paved	🗺 MAPs	2006	🌲 BLM
⊗ Closure	🔥 Helispot	📡 Repeater	🚰 Hose cache	— Completed Dozer Line	— Proposed Dozer Line	— Gravel Surface	🗺 MAPs Area	2007	🌲 BOR
⬇ Dip Site	🔥 Hot Spot	📡 Staging Area	— Access or Improved Road	— Proposed Dozer Line	— Temporary Flight Restriction	— Improved Native Material	🗺 Closure Area	2008	🌲 Forest Service
⬇ Drop Point	👤 Incident Command Post	📡 Staging Area	— Proposed Burnout	— Proposed Dozer Line	— Federal System Roads	— State Roads	🗺 Treatment	2010	🏠 Private Lands
🔥 Fire Origin	👤 IR Isolated Heat Source	📡 Water Source	— Proposed Burnout	— Proposed Dozer Line	— State Roads	— Other Roads	🗺 Underburn	2012	🏠 State Lands
⌘ Division Break		⚠ Value at Risk			— State Roads	— Other Roads	🗺 Timber Harvest	2015	
					— State Roads	— Other Roads	🗺 Precommercial Thin		
					— State Roads	— Other Roads	🗺 Bull Trout Exlosures		