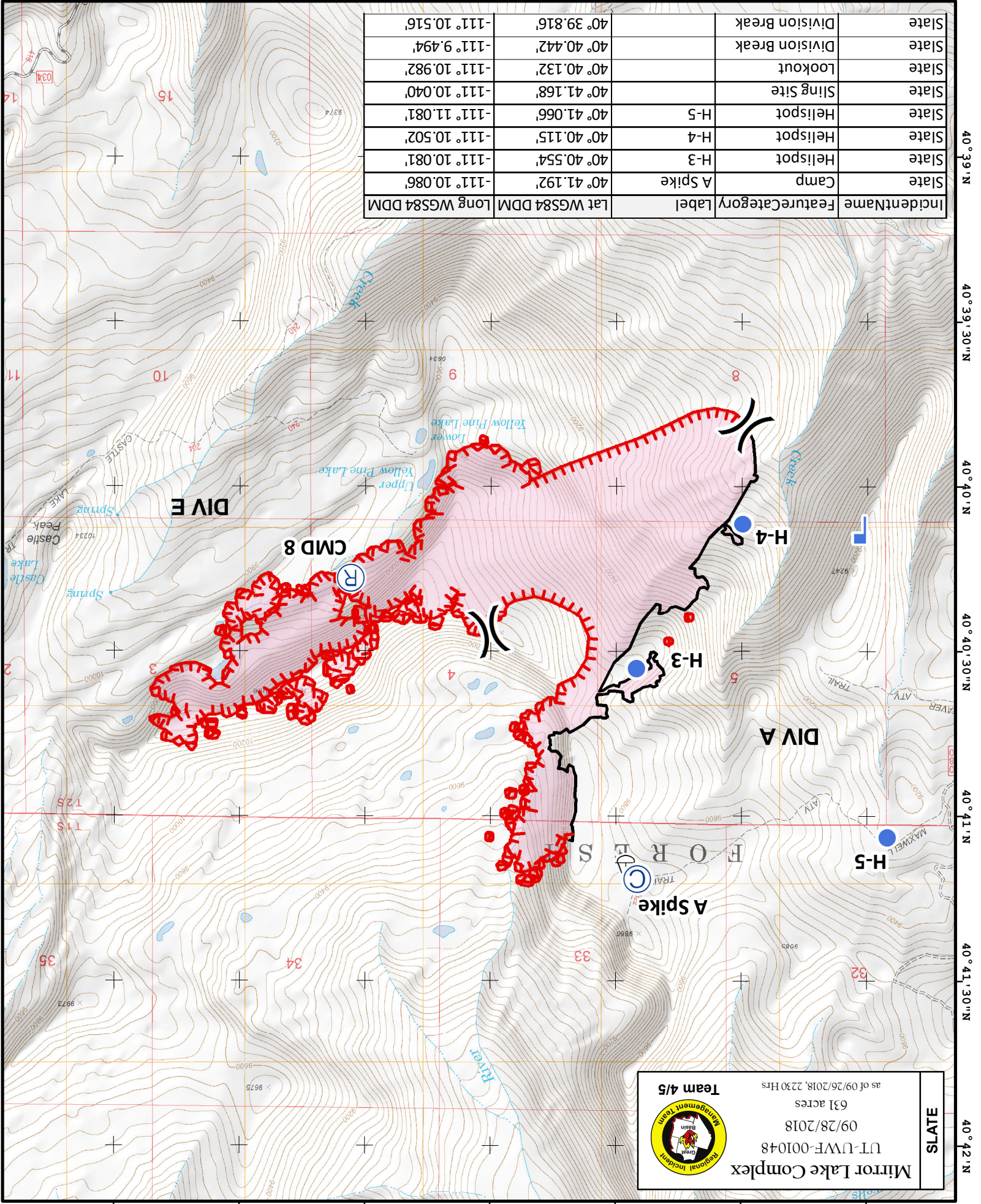
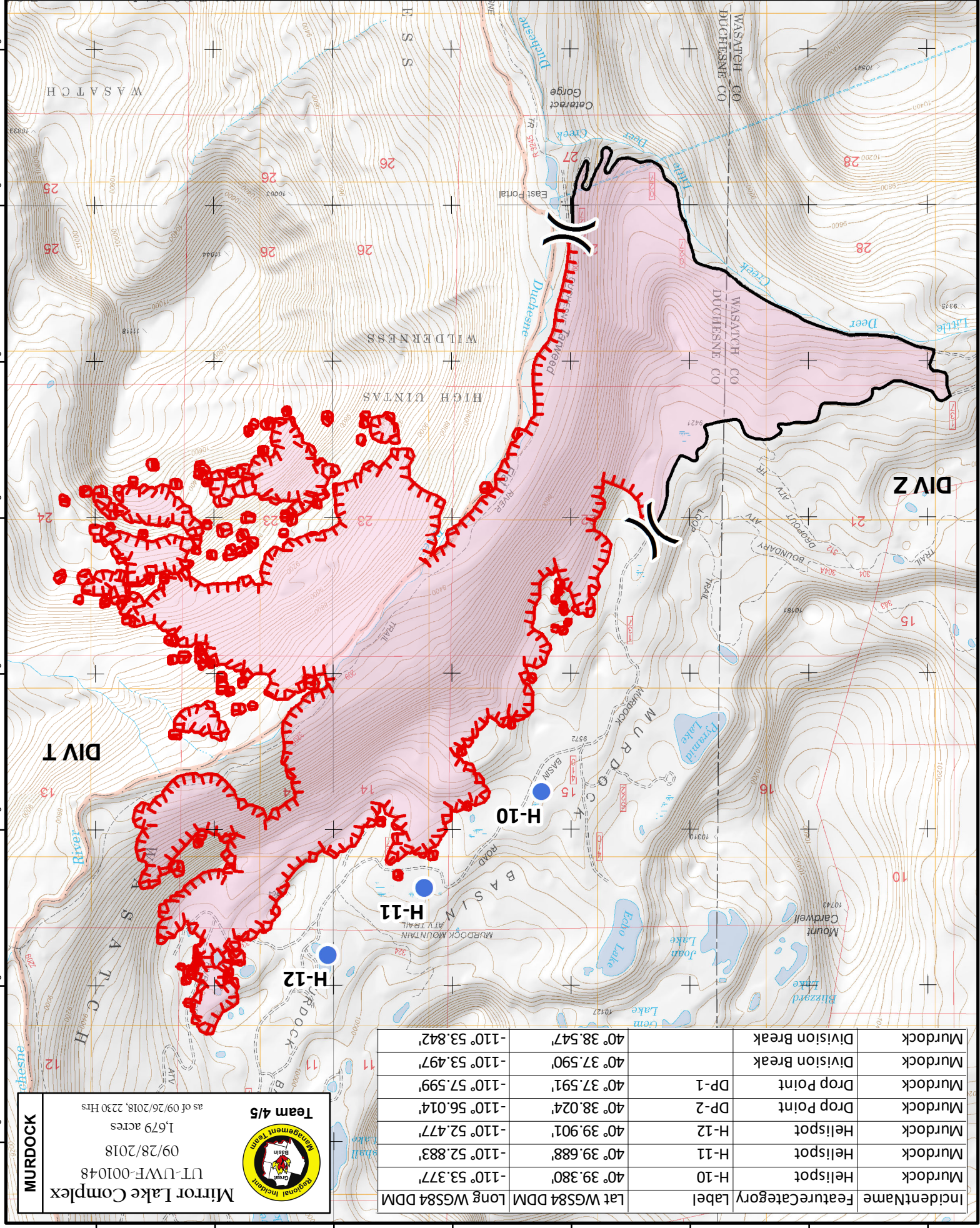


| IncidentName | FeatureCategory | Label | Lat WGS84 DDM | Long WGS84 DDM | State |
|----------------|-----------------|---------|---------------|----------------|-------|
| Camp | A Spike | A Spike | 40° 41.192' | -111° 10.086' | State |
| Helispot | H-3 | H-3 | 40° 40.554' | -111° 10.081' | State |
| Helispot | H-4 | H-4 | 40° 40.115' | -111° 10.502' | State |
| Helispot | H-5 | H-5 | 40° 41.066' | -111° 11.081' | State |
| Sling Site | | | 40° 41.168' | -111° 10.040' | State |
| Lookout | | | 40° 40.132' | -111° 10.982' | State |
| Division Break | | | 40° 40.442' | -111° 9.494' | State |
| Division Break | | | 40° 39.816' | -111° 10.516' | State |



SLATS

Mirror Lake Complex
UT-UWF-0010+8
09/28/2018
631 acres
as of 09/26/2018, 2230 Hrs



MURDOCK

Mirror Lake Complex
UT-UWF-0010+8
09/28/2018
1,679 acres
as of 09/26/2018, 2230 Hrs

| IncidentName | FeatureCategory | Label | Lat WGS84 DDM | Long WGS84 DDM | State |
|----------------|-----------------|-------|---------------|----------------|---------|
| Helispot | H-10 | H-10 | 40° 39.380' | -110° 53.377' | Murdock |
| Helispot | H-11 | H-11 | 40° 39.688' | -110° 52.883' | Murdock |
| Helispot | H-12 | H-12 | 40° 39.901' | -110° 52.477' | Murdock |
| Drop Point | DP-2 | DP-2 | 40° 38.024' | -110° 56.014' | Murdock |
| Drop Point | DP-1 | DP-1 | 40° 37.591' | -110° 57.599' | Murdock |
| Division Break | | | 40° 37.590' | -110° 53.497' | Murdock |
| Division Break | | | 40° 38.547' | -110° 53.842' | Murdock |