


110°57'W 110°56'W 110°55'W 110°54'W 110°53'W 110°52'W 110°51'W 110°50'W 110°49'W 110°48'W

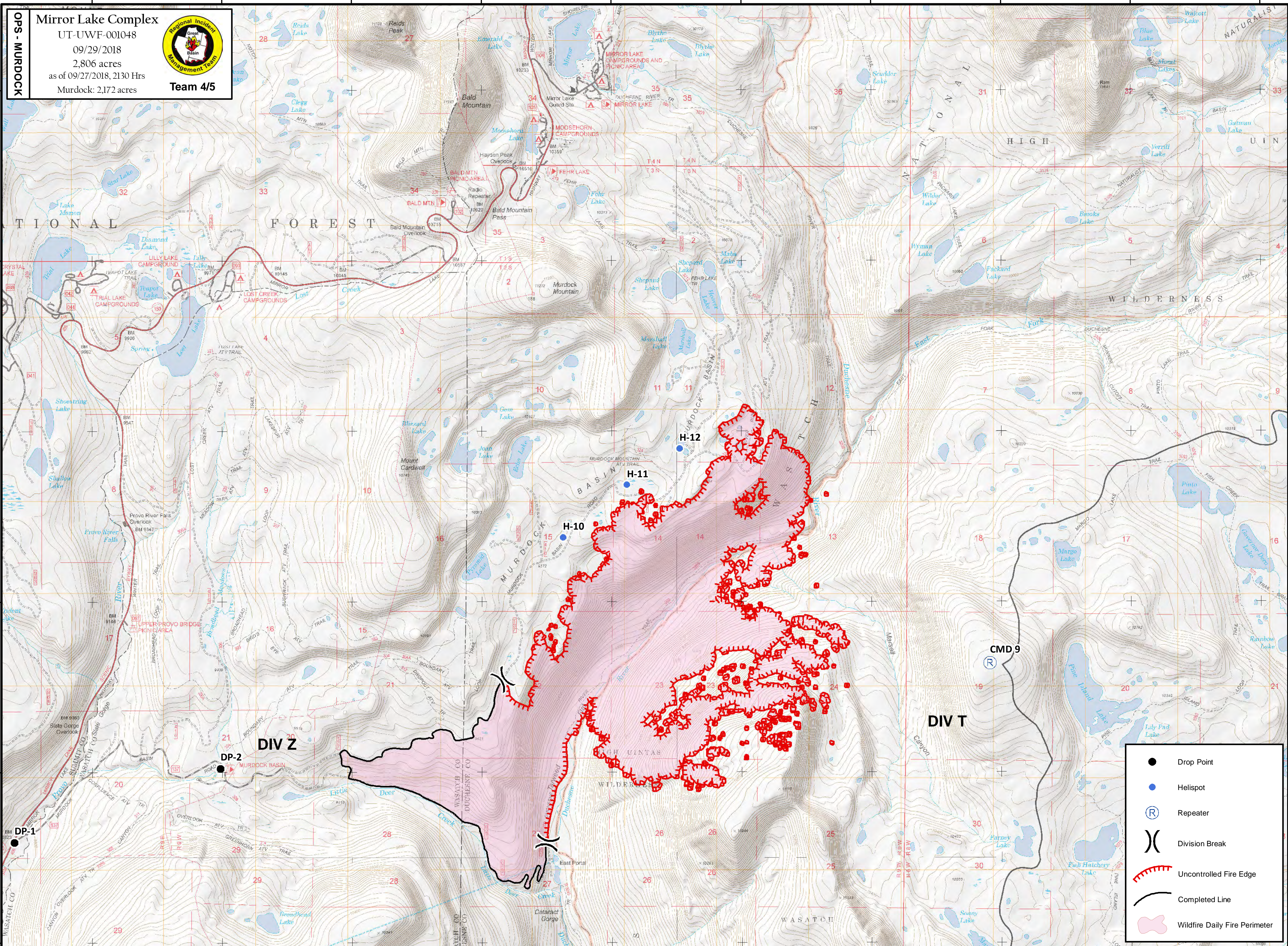
40°42'N
40°41'N
40°40'N
40°39'N
40°38'N
40°37'N








OPS - MURDOCK

Mirror Lake Complex
UT-UWF-001048
09/29/2018
2,806 acres
as of 09/27/2018, 2130 Hrs
Murdock: 2,172 acres



Team 4/5



-  Drop Point
-  Helispot
-  Repeater
-  Division Break
-  Uncontrolled Fire Edge
-  Completed Line
-  Wildfire Daily Fire Perimeter

NORTH Coordinate System: NAD 1983 UTM Zone 12N
Map Scale: 1:24,000, 1 inch = 2,000 feet



OPS