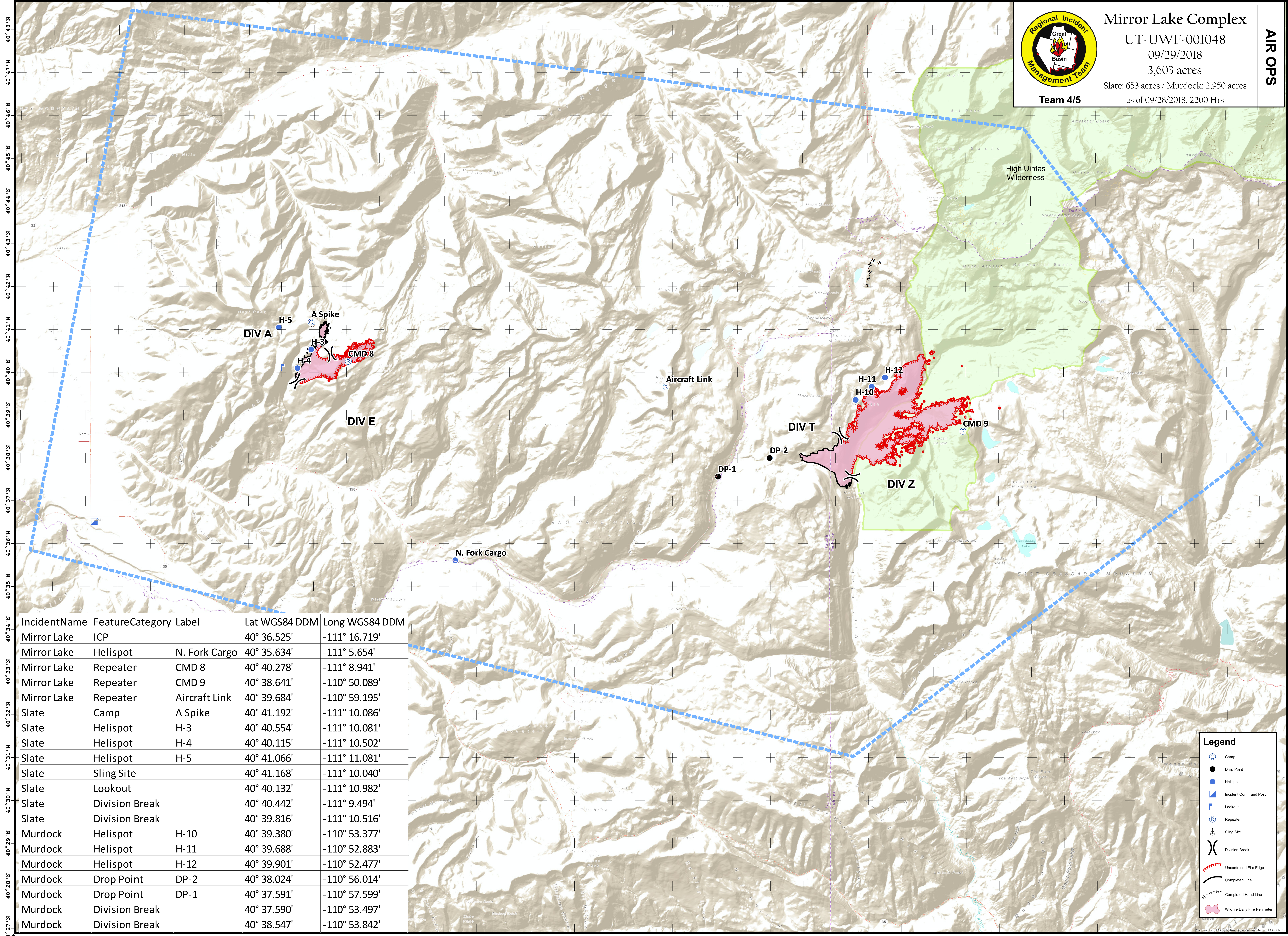


111°19'W 111°18'W 111°17'W 111°16'W 111°15'W 111°14'W 111°13'W 111°12'W 111°11'W 111°10'W 111°9'W 111°8'W 111°7'W 111°6'W 111°5'W 111°4'W 111°3'W 111°2'W 111°1'W 111°0'W 110°59'W 110°58'W 110°57'W 110°56'W 110°55'W 110°54'W 110°53'W 110°52'W 110°51'W 110°50'W 110°49'W 110°48'W 110°47'W 110°46'W 110°45'W 110°44'W 110°43'W 110°42'W 110°41'W



Mirror Lake Complex
 UT-UWF-001048
 09/29/2018
 3,603 acres
 Slate: 653 acres / Murdock: 2,950 acres
 as of 09/28/2018, 2200 Hrs

AIR OPS

IncidentName	FeatureCategory	Label	Lat WGS84 DDM	Long WGS84 DDM
Mirror Lake	ICP		40° 36.525'	-111° 16.719'
Mirror Lake	Helispot	N. Fork Cargo	40° 35.634'	-111° 5.654'
Mirror Lake	Repeater	CMD 8	40° 40.278'	-111° 8.941'
Mirror Lake	Repeater	CMD 9	40° 38.641'	-110° 50.089'
Mirror Lake	Repeater	Aircraft Link	40° 39.684'	-110° 59.195'
Slate	Camp	A Spike	40° 41.192'	-111° 10.086'
Slate	Helispot	H-3	40° 40.554'	-111° 10.081'
Slate	Helispot	H-4	40° 40.115'	-111° 10.502'
Slate	Helispot	H-5	40° 41.066'	-111° 11.081'
Slate	Sling Site		40° 41.168'	-111° 10.040'
Slate	Lookout		40° 40.132'	-111° 10.982'
Slate	Division Break		40° 40.442'	-111° 9.494'
Slate	Division Break		40° 39.816'	-111° 10.516'
Murdock	Helispot	H-10	40° 39.380'	-110° 53.377'
Murdock	Helispot	H-11	40° 39.688'	-110° 52.883'
Murdock	Helispot	H-12	40° 39.901'	-110° 52.477'
Murdock	Drop Point	DP-2	40° 38.024'	-110° 56.014'
Murdock	Drop Point	DP-1	40° 37.591'	-110° 57.599'
Murdock	Division Break		40° 37.590'	-110° 53.497'
Murdock	Division Break		40° 38.547'	-110° 53.842'

Legend

- Camp
- Drop Point
- Helispot
- Incident Command Post
- Lookout
- Repeater
- Sling Site
- Division Break
- Uncontrolled Fire Edge
- Completed Line
- Completed Hand Line
- Wildfire Daily Fire Perimeter

Coordinate System: NAD 1983 UTM Zone 12N
 Map Scale: 1:47,065, 1 inch = 3,922 feet

Miles

AIR OPS