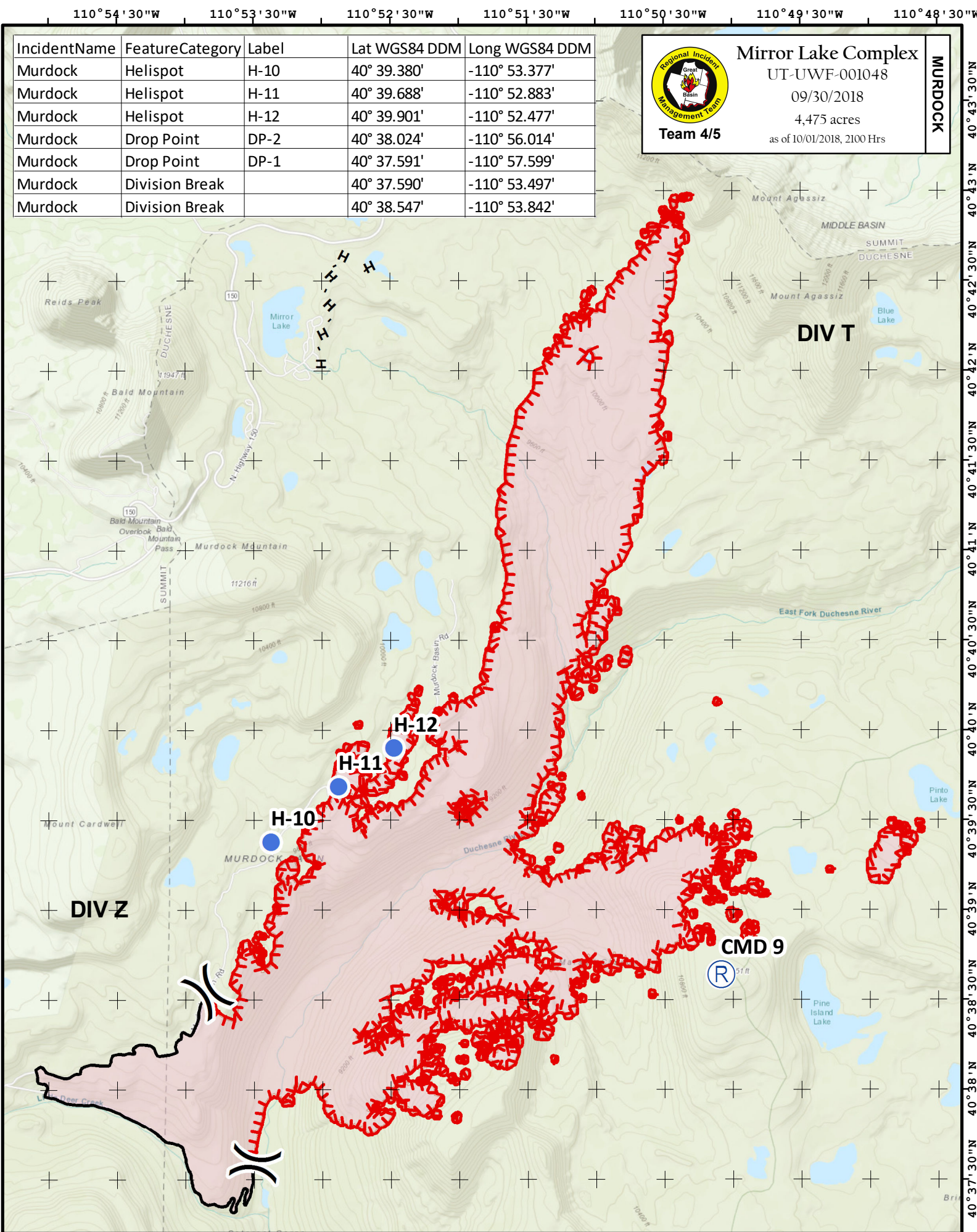


Coordinate System: NAD 1983 UTM Zone 12N  
 Map Scale: 1:48,000, 1 inch = 4,000 feet  
 NORTH



Coordinate System: NAD 1983 UTM Zone 12N  
 Map Scale: 1:48,000, 1 inch = 4,000 feet  
 NORTH

**Mirror Lake Complex**  
 UT-UWF-001048  
 09/30/2018  
 662 acres  
 as of 09/29/2018, 2100 Hrs

**Team 4/5**

**Mirror Lake Complex**  
 UT-UWF-001048  
 09/30/2018  
 4,475 acres  
 as of 10/01/2018, 2100 Hrs

**Team 4/5**

IncidentName	FeatureCategory	Label	Lat WGS84 DDM	Long WGS84 DDM
Slate	Camp	A Spike	40° 41.192'	-111° 10.086'
Slate	Helispot	H-3	40° 40.554'	-111° 10.081'
Slate	Helispot	H-4	40° 40.115'	-111° 10.502'
Slate	Helispot	H-5	40° 41.066'	-111° 11.081'
Slate	Sling Site		40° 41.168'	-111° 10.040'
Slate	Lookout		40° 40.132'	-111° 10.982'
Slate	Division Break		40° 40.442'	-111° 9.494'
Slate	Division Break		40° 39.816'	-111° 10.516'

IncidentName	FeatureCategory	Label	Lat WGS84 DDM	Long WGS84 DDM
Murdock	Helispot	H-10	40° 39.380'	-110° 53.377'
Murdock	Helispot	H-11	40° 39.688'	-110° 52.883'
Murdock	Helispot	H-12	40° 39.901'	-110° 52.477'
Murdock	Drop Point	DP-2	40° 38.024'	-110° 56.014'
Murdock	Drop Point	DP-1	40° 37.591'	-110° 57.599'
Murdock	Division Break		40° 37.590'	-110° 53.497'
Murdock	Division Break		40° 38.547'	-110° 53.842'