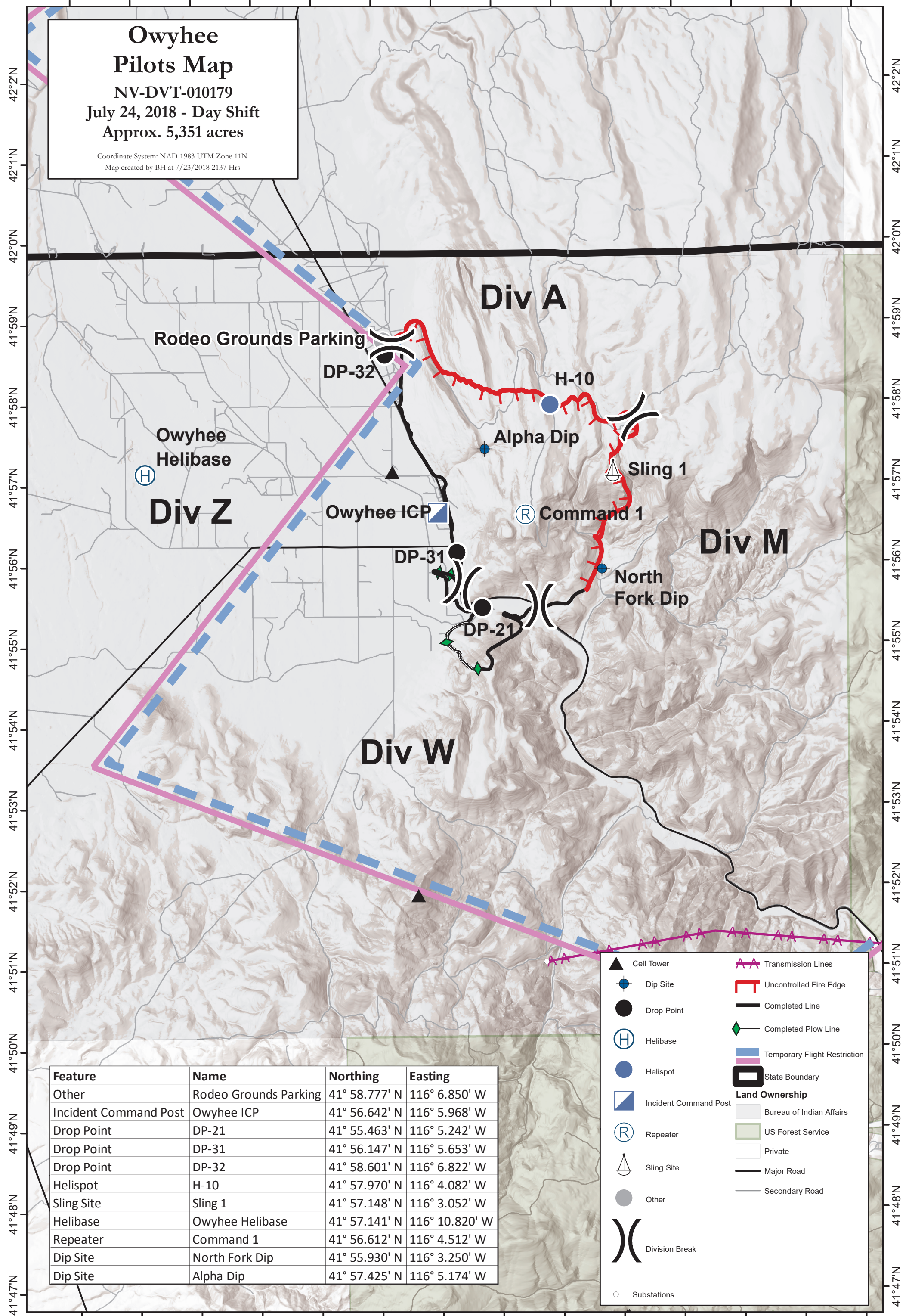


116°12'W 116°11'W 116°10'W 116°9'W 116°8'W 116°7'W 116°6'W 116°5'W 116°4'W 116°3'W 116°2'W 116°1'W 116°0'W 115°59'W

**Owyhee Pilots Map**  
 NV-DVT-010179  
 July 24, 2018 - Day Shift  
 Approx. 5,351 acres

Coordinate System: NAD 1983 UTM Zone 11N  
 Map created by BH at 7/23/2018 21:37 Hrs



Feature	Name	Northing	Easting
Other	Rodeo Grounds Parking	41° 58.777' N	116° 6.850' W
Incident Command Post	Owyhee ICP	41° 56.642' N	116° 5.968' W
Drop Point	DP-21	41° 55.463' N	116° 5.242' W
Drop Point	DP-31	41° 56.147' N	116° 5.653' W
Drop Point	DP-32	41° 58.601' N	116° 6.822' W
Helispot	H-10	41° 57.970' N	116° 4.082' W
Sling Site	Sling 1	41° 57.148' N	116° 3.052' W
Helibase	Owyhee Helibase	41° 57.141' N	116° 10.820' W
Repeater	Command 1	41° 56.612' N	116° 4.512' W
Dip Site	North Fork Dip	41° 55.930' N	116° 3.250' W
Dip Site	Alpha Dip	41° 57.425' N	116° 5.174' W

- ▲ Cell Tower
- Dip Site
- Drop Point
- Ⓜ Helibase
- Helispot
- ▣ Incident Command Post
- Ⓡ Repeater
- ⚓ Sling Site
- Other
- ⌋ Division Break
- Substations
- ⚡ Transmission Lines
- ▬ Uncontrolled Fire Edge
- ▬ Completed Line
- ◆ Completed Plow Line
- ▬ Temporary Flight Restriction
- ▭ State Boundary
- Land Ownership**
- ▭ Bureau of Indian Affairs
- ▭ US Forest Service
- ▭ Private
- ▬ Major Road
- ▬ Secondary Road