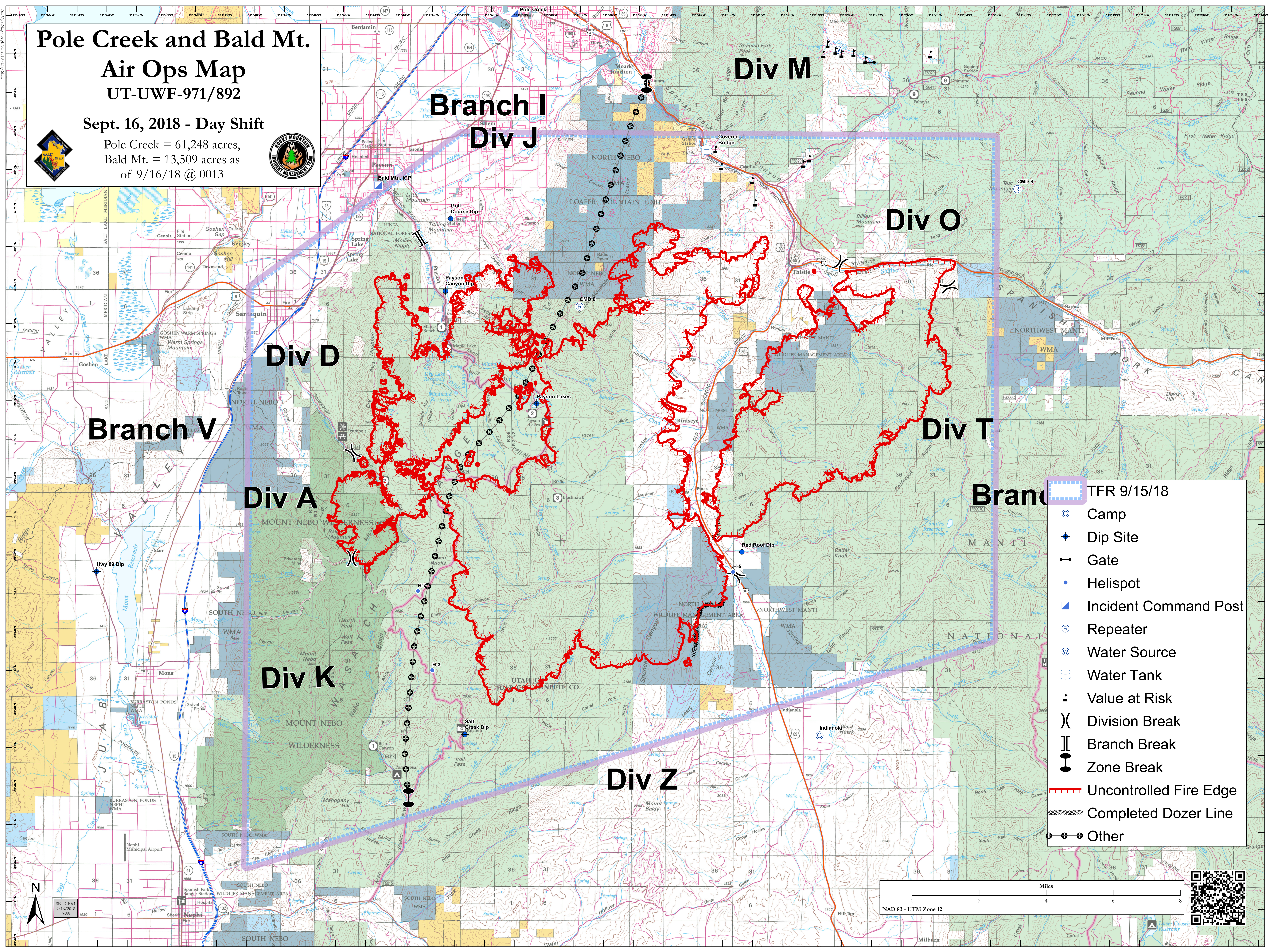


# Pole Creek and Bald Mt.

## Air Ops Map UT-UWF-971/892

Sept. 16, 2018 - Day Shift

Pole Creek = 61,248 acres,  
Bald Mt. = 13,509 acres as  
of 9/16/18 @ 0013



- TFR 9/15/18
- ⊙ Camp
- ◆ Dip Site
- Gate
- Helispot
- ▣ Incident Command Post
- Ⓡ Repeater
- Ⓜ Water Source
- Ⓜ Water Tank
- ⚠ Value at Risk
- ) Division Break
- || Branch Break
- Zone Break
- Uncontrolled Fire Edge
- ⊘ Completed Dozer Line
- ⊕ Other

Miles 0 2 4 6 8  
NAD 83 - UTM Zone 12

