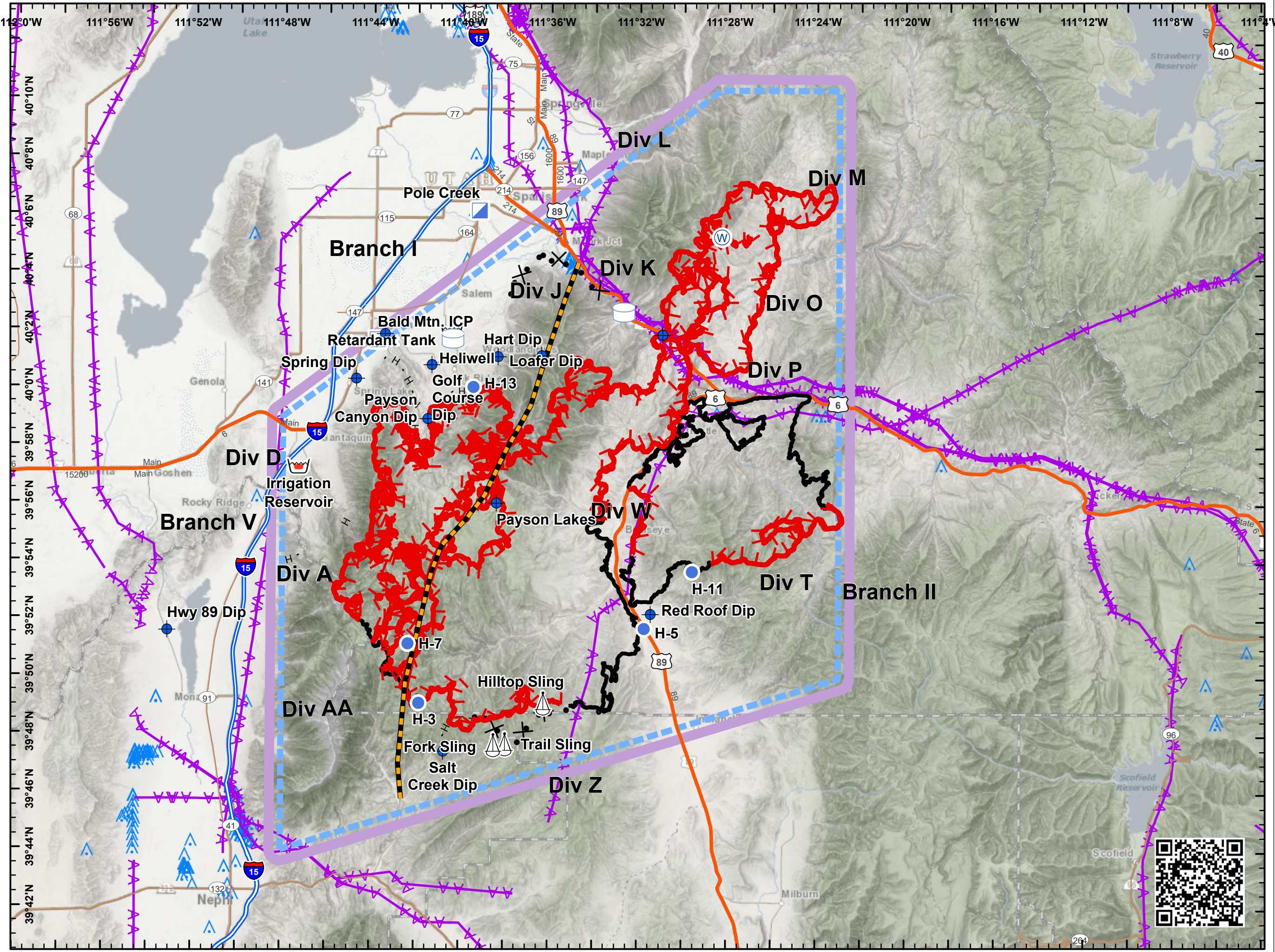


**Pole Creek & Bald
Mtn. Pilot Map**
UT-UWF-971/892
September 19, 2018
Day Shift

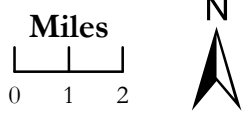
Pole Creek = 84,444 acres,
Bald Mt. = 16,554 acres as
of 9/18/18 2257 hrs

- Dip Site
- Helispot
- Incident Command Post
- Retardant/Mud Pit
- Sling Site
- Water Source
- Water Tank
- Electrical Lines
- TFR 9/16/18
- Uncontrolled Fire Edge
- Completed Line
- Completed Hand Line
- Proposed Dozer Line
- Zone
- Single Obstructions (>= 1000 Ft AGL)
- Group Obstructions (>= 1000 Ft AGL)
- Single Obstructions (< 1000 Ft AGL)
- Group Obstructions (< 1000 Ft AGL)



NAD 83
UTM Zone 12

SE - GB#1
9/19/2018
0622



Point Type	Label	Lat WGS84	Long WGS84
Camp	Indianola	39° 47.480' N	111° 28.780' W
Camp	Monument Spike	39° 50.603' N	111° 43.241' W
Camp	Ponderosa	39° 46.389' N	111° 42.982' W
Camp	Sawtooth Spike	39° 59.341' N	111° 43.267' W
Camp	Secondary	39° 59.317' N	111° 42.679' W
Camp	Sheep Creek	39° 59.493' N	111° 18.519' W
Camp	Warm Springs/Geronimo	39° 59.922' N	111° 42.687' W
Dip Site	Golf Course Dip	40° 00.829' N	111° 41.320' W
Dip Site	Hart Dip	40° 01.159' N	111° 36.379' W
Dip Site	Hwy 89 Dip	39° 51.589' N	111° 53.149' W
Dip Site	Loafer Dip	40° 01.116' N	111° 38.343' W
Dip Site	Payson Canyon Dip	39° 58.950' N	111° 41.479' W
Dip Site	Payson Lakes	39° 56.044' N	111° 38.377' W
Dip Site	Red Roof Dip	39° 52.230' N	111° 31.429' W
Dip Site	Salt Creek Dip	39° 47.443' N	111° 40.713' W
Dip Site	Spring Dip	40° 00.327' N	111° 44.712' W
Drop Point	Divs O drop point	39° 59.845' N	111° 29.637' W
Drop Point	DP-10	40° 00.823' N	111° 42.625' W
Drop Point	DP-12	39° 59.446' N	111° 41.968' W
Drop Point	DP-15	39° 58.668' N	111° 41.482' W
Drop Point	DP-2	39° 56.002' N	111° 45.779' W
Drop Point	DP-20	39° 59.832' N	111° 39.714' W
Drop Point	DP-30	40° 02.566' N	111° 32.806' W
Drop Point	DP-35	40° 04.201' N	111° 26.131' W
Drop Point	DP-5	39° 57.632' N	111° 46.570' W
Helispot	H-11	39° 53.683' N	111° 29.574' W
Helispot	H-13	40° 00.052' N	111° 39.445' W
Helispot	H-3	39° 49.105' N	111° 41.823' W
Helispot	H-5	39° 51.709' N	111° 31.720' W
Helispot	H-7	39° 51.156' N	111° 42.328' W
Incident Command Post	Bald Mtn. ICP	40° 01.678' N	111° 43.781' W
Incident Command Post	Pole Creek	40° 06.169' N	111° 39.216' W
Mobile Weather Unit	Diamond	40° 04.530' N	111° 24.954' W
Mobile Weather Unit	Spanish Fork Peak	40° 04.848' N	111° 32.220' W
Mobile Weather Unit	Woodland Hills	40° 00.130' N	111° 38.449' W
Repeater	CMD 7	39° 58.570' N	111° 36.952' W
Repeater	CMD 8	40° 01.685' N	111° 22.206' W
Retardant/Mud Pit	Irrigation Reservoir	39° 57.271' N	111° 47.295' W
Retardant/Mud Pit	Retardant Tank	40° 01.978' N	111° 40.449' W
Sling Site	Fork Sling	39° 47.658' N	111° 38.473' W
Sling Site	Hilltop Sling	39° 49.114' N	111° 36.240' W
Sling Site	Trail Sling	39° 47.697' N	111° 37.958' W
Value at Risk	Covered Bridge	40° 02.678' N	111° 32.388' W
Value at Risk	Diamond Fork Guard Station	40° 09.518' N	111° 19.741' W
Water Tank	Heliwell	40° 01.713' N	111° 40.384' W