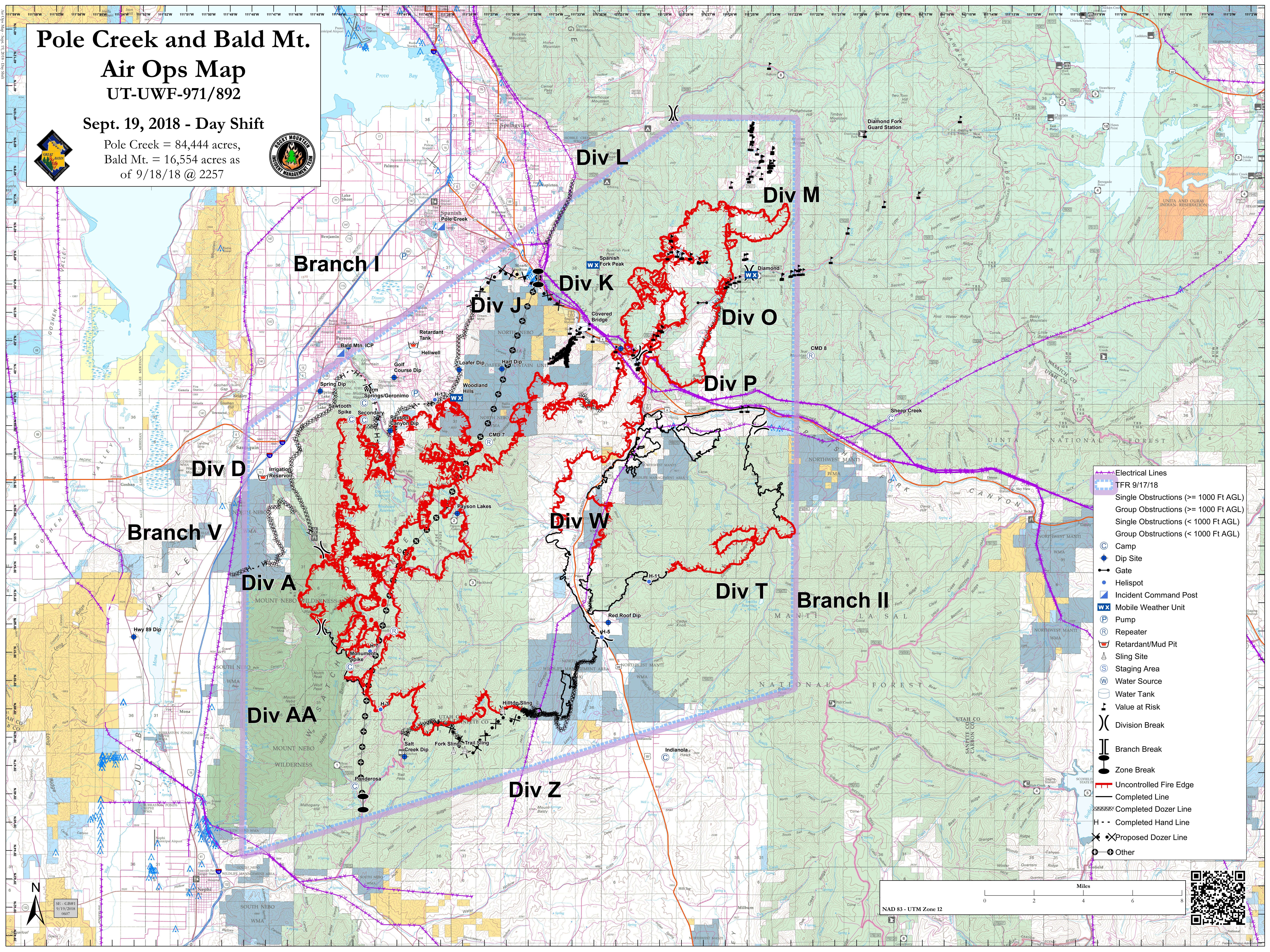


Pole Creek and Bald Mt.

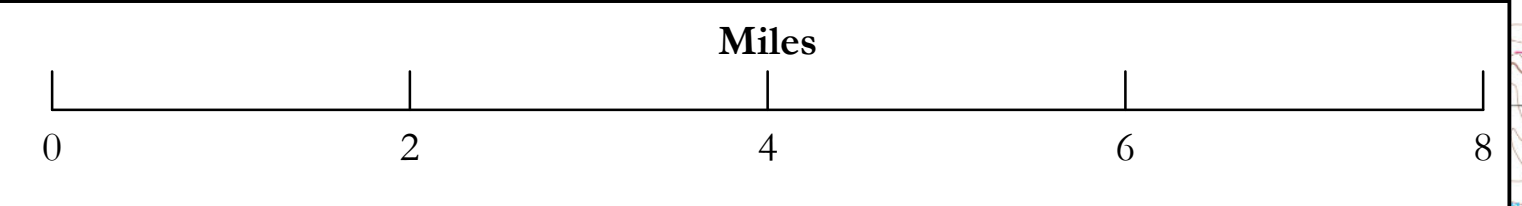
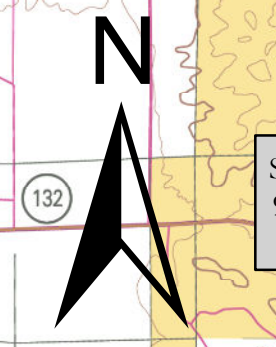
Air Ops Map UT-UWF-971/892

Sept. 19, 2018 - Day Shift

Pole Creek = 84,444 acres,
Bald Mt. = 16,554 acres as
of 9/18/18 @ 2257



- Electrical Lines
- TFR 9/17/18
- Single Obstructions (>= 1000 Ft AGL)
- Group Obstructions (>= 1000 Ft AGL)
- Single Obstructions (< 1000 Ft AGL)
- Group Obstructions (< 1000 Ft AGL)
- Camp
- Dip Site
- Gate
- Helispot
- Incident Command Post
- Mobile Weather Unit
- Pump
- Repeater
- Retardant/Mud Pit
- Sling Site
- Staging Area
- Water Source
- Water Tank
- Value at Risk
- Division Break
- Branch Break
- Zone Break
- Uncontrolled Fire Edge
- Completed Line
- Completed Dozer Line
- Completed Hand Line
- Proposed Dozer Line
- Other



NAD 83 - UTM Zone 12

