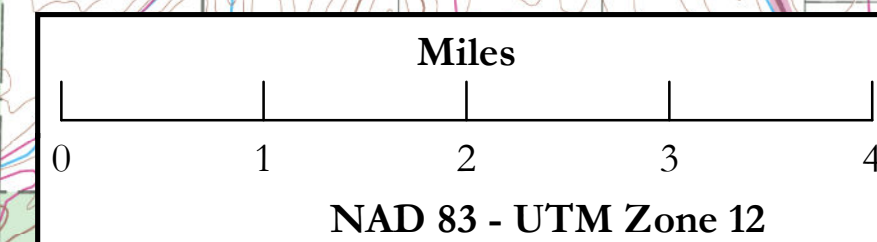
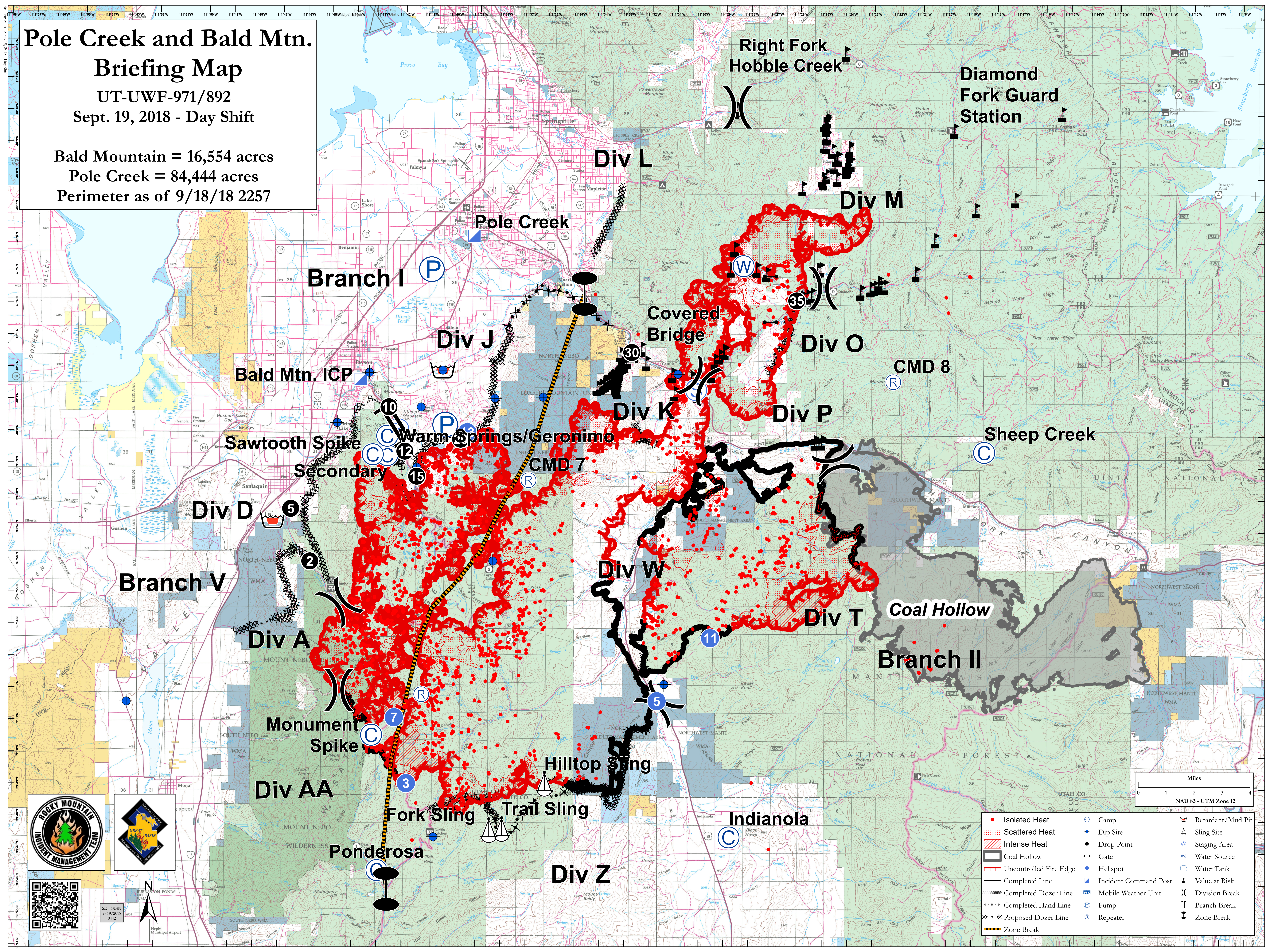


Pole Creek and Bald Mtn. Briefing Map

UT-UWF-971/892

Sept. 19, 2018 - Day Shift

Bald Mountain = 16,554 acres
Pole Creek = 84,444 acres
Perimeter as of 9/18/18 2257



	Isolated Heat		Camp		Retardant/Mud Pit
	Scattered Heat		Dip Site		Sling Site
	Intense Heat		Drop Point		Staging Area
	Coal Hollow		Gate		Water Source
	Uncontrolled Fire Edge		Helispot		Water Tank
	Completed Line		Incident Command Post		Value at Risk
	Completed Dozer Line		Mobile Weather Unit		Division Break
	Completed Hand Line		Pump		Branch Break
	Proposed Dozer Line		Repeater		Zone Break



SE - GB91
9/19/2018
0442