

Pole Creek and Bald Mtn.

Briefing Map

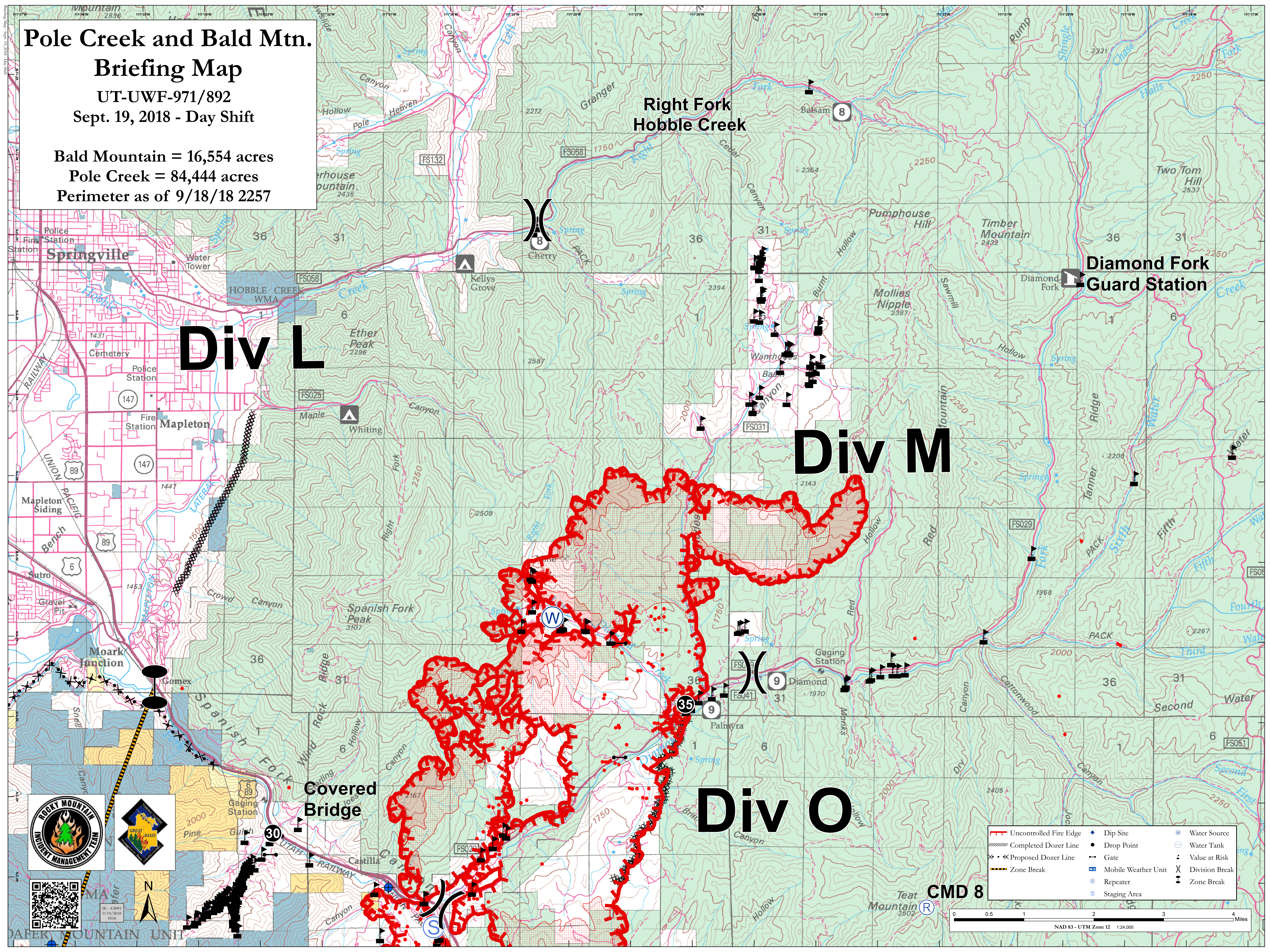
UT-UWF-971/892

Sept. 19, 2018 - Day Shift

Bald Mountain = 16,554 acres

Pole Creek = 84,444 acres

Perimeter as of 9/18/18 2257



Right Fork
Hobble Creek

Diamond Fork
Guard Station

Div L

Div M

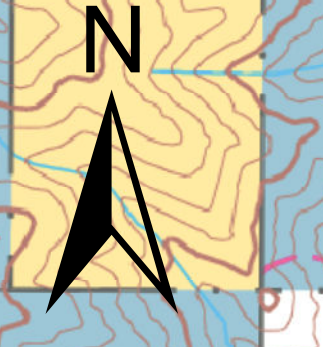
Div O

CMD 8

Uncontrolled Fire Edge	Dip Site	Water Source
Completed Dozer Line	Drop Point	Water Tank
Proposed Dozer Line	Gate	Value at Risk
Zone Break	Mobile Weather Unit	Division Break
	Repeater	Zone Break
	Staging Area	



SE - GBR1
9/19/2018
0518



NAD 83 - UTM Zone 12 1:24,000