

Pole Creek & Bald Mtn. Pilot Map

UT-UWF-971/892

September 23, 2018

Day Shift

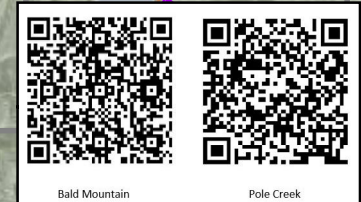
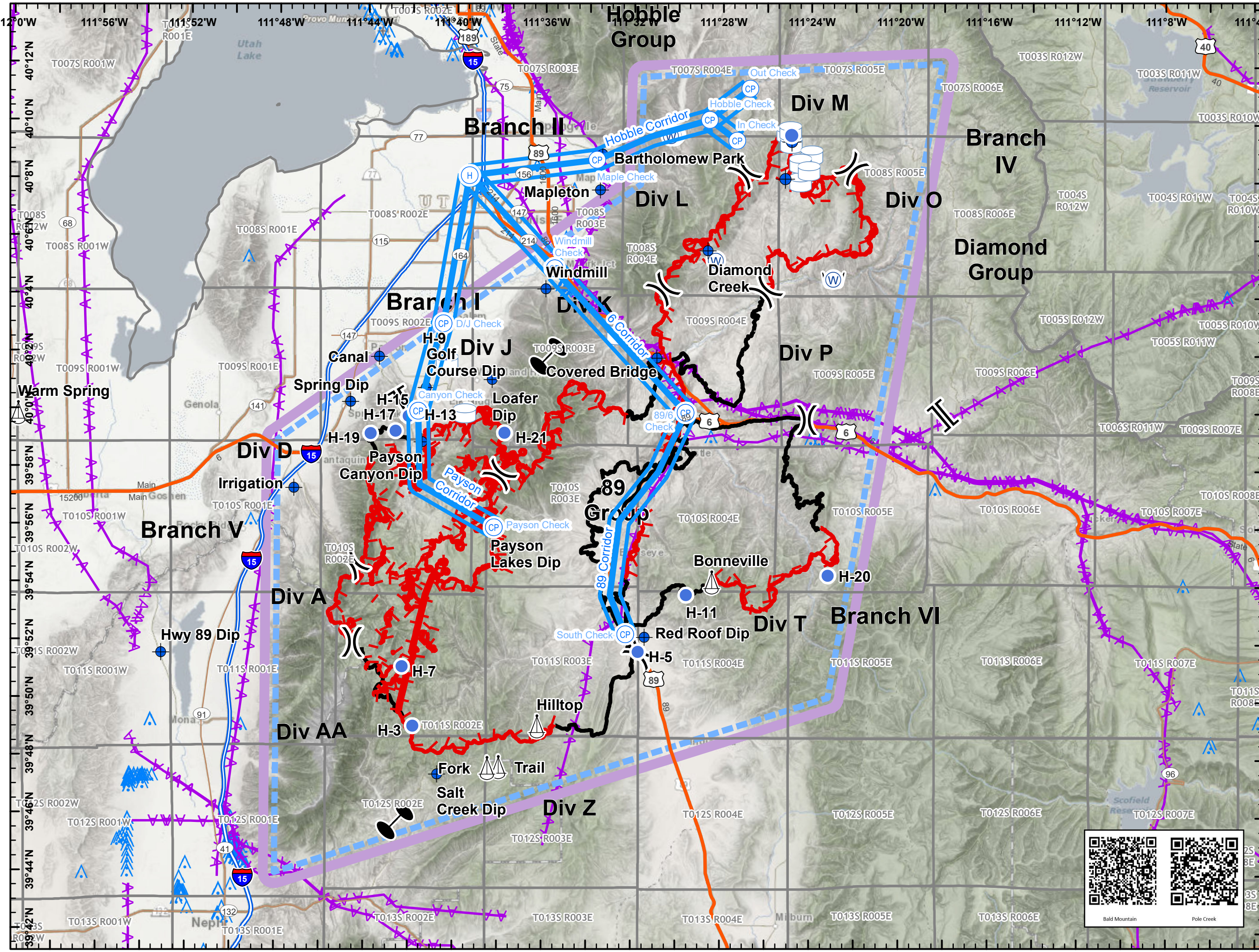
Pole Creek = 100,144 acres as of 09/22/2018 1500 MDT
 Bald Mt. = 18,550 acres as of 9/21/18 2311 MDT

- TFR9/19/2018
- Corridor
- Check Point
- Helibase
- Township/Range
- Dip Site
- Helispot
- Incident Command Post
- Retardant/Mud Pit
- Sling Site
- Water Source
- Water Tank
- Division Break
- Branch Break
- Zone Break
- Uncontrolled Fire Edge
- Completed Line
- Electrical Lines
- Single Obstructions (>= 1000 Ft AGL)
- Group Obstructions (>= 1000 Ft AGL)
- Single Obstructions (< 1000 Ft AGL)
- Group Obstructions (< 1000 Ft AGL)

NAD 83
UTM Zone 12

DW - GB#1
9/22/2018
2246

Miles



Pole Creek and Bald Mountain Fires UT-UWF-971/892

Coordinate Point Table

9/22/2018 2000

Type	Label	Lat WGS84	Long WGS84
Camp	Indianola	39° 47.480'N	111° 28.780'W
Camp	Monument Spike	39° 50.603'N	111° 43.241'W
Camp	Ponderosa	39° 46.389'N	111° 42.982'W
Camp	Sawtooth Spike	39° 59.341'N	111° 43.267'W
Camp	Sheep Creek	39° 59.493'N	111° 48.519'W
Camp	Warm Springs	39° 59.922'N	111° 42.687'W
Check Point	89/6 Check	39° 59.988N	111° 29.633W
Check Point	Canyon Check	40° 0.012N	111° 41.67W
Check Point	DJ Check	40° 03.04N	111° 40.557W
Check Point	Payson Check	39° 55.965N	111° 38.233W
Check Point	South Check	39° 52.315N	111° 32.28W
Check Point	Windmill Check	40° 04.978N	111° 35.557W
Check Point	In Check	40° 09.43N	111° 27.363W
Check Point	Out Check	40° 11.237N	111° 26.782W
Check Point	Maple Check	40° 08.745N	111° 33.680W
Check Point	Hobble Check	40° 10.143N	111° 28.603W
Configuration Site	North Re-Config.	40° 09.625N	111° 24.907W
Dip Site	Bartholomew Park	40° 08.955'N	111° 33.420'W
Dip Site	Canal	40° 01.896'N	111° 43.425'W
Dip Site	Covered Bridge	40° 01.900'N	111° 30.930'W
Dip Site	Diamond Creek	40° 05.613'N	111° 28.650'W
Dip Site	Golf Course Dip	40° 00.829'N	111° 41.320'W
Dip Site	Hwy 89 Dip	39° 51.589'N	111° 53.149'W
Dip Site	Irrigation	39° 57.326'N	111° 47.230'W
Dip Site	Loader Dip	40° 01.116'N	111° 38.343'W
Dip Site	Mapleton	40° 07.705'N	111° 33.522'W
Dip Site	Payson Canyon Dip	39° 58.950'N	111° 41.479'W
Dip Site	Payson Lakes Dip	39° 56.044'N	111° 38.377'W
Dip Site	Red Roof Dip	39° 52.230'N	111° 31.429'W
Dip Site	Salt Creek Dip	39° 47.443'N	111° 40.713'W
Dip Site	Spring Dip	40° 00.327'N	111° 44.712'W
Dip Site	Windmill	40° 04.270'N	111° 35.952'W
Dip Site	Zip Dip	40° 09.403N	111° 24.887'W
Dip Site		40° 01.978'N	111° 40.448'W
Drop Point	DP-2	39° 56.002'N	111° 45.779'W
Drop Point	DP-5	39° 57.632'N	111° 46.570'W
Drop Point	DP-6	39° 57.892'N	111° 46.006'W
Drop Point	DP-7	39° 59.172'N	111° 45.616'W
Drop Point	DP-10	40° 00.823'N	111° 42.625'W
Drop Point	DP-12	39° 59.446'N	111° 41.968'W
Drop Point	DP-15	39° 58.668'N	111° 41.482'W
Drop Point	DP-20	39° 59.832'N	111° 39.714'W
Drop Point	DP-30	40° 02.566'N	111° 32.806'W
Drop Point	DP-31	40° 08.938'N	111° 33.458'W
Drop Point	DP-32	40° 09.980'N	111° 29.609'W
Drop Point	DP-33	40° 08.355'N	111° 24.582'W
Drop Point	DP-35	40° 04.201'N	111° 26.131'W
Drop Point	DP-45	40° 01.758'N	111° 30.309'W
Drop Point	DP-55	39° 59.845'N	111° 29.637'W
Drop Point	DP-60	39° 55.462'N	111° 32.655'W
Drop Point	DP-65	39° 53.617'N	111° 23.731'W
Drop Point	DP-70	39° 51.295'N	111° 25.257'W
Drop Point	DP-80	39° 48.305'N	111° 40.864'W
Hellsipot	H-11	39° 53.663'N	111° 29.574'W
Hellsipot	H-13	40° 00.052'N	111° 39.445'W
Hellsipot	H-15	39° 59.833'N	111° 42.097'W
Hellsipot	H-17	39° 59.317'N	111° 42.679'W
Hellsipot	H-19	39° 59.227'N	111° 43.795'W
Hellsipot	H-20	39° 54.382'N	111° 23.193'W
Hellsipot	H-21	39° 59.269'N	111° 37.770'W
Hellsipot	H-3	39° 49.105'N	111° 41.823'W
Hellsipot	H-5	39° 51.709'N	111° 31.720'W
Hellsipot	H-7	39° 51.156'N	111° 42.328'W
Hellsipot	H-9	40° 01.977'N	111° 40.424'W
Incident Command Post	Bald Mtn. ICP	40° 01.678'N	111° 43.781'W
Incident Command Post	Pole Creek	40° 06.169'N	111° 39.216'W
Mobile Weather Unit	Diamond	40° 04.530'N	111° 24.954'W
Mobile Weather Unit	Spanish Fork Peak	40° 04.848'N	111° 32.220'W
Mobile Weather Unit	Woodland Hills	40° 00.130'N	111° 38.449'W
Repeater	CMD 7	39° 58.570'N	111° 36.952'W
Repeater	CMD 8	40° 01.685'N	111° 22.206'W
Repeater	CMD 9	40° 16.264'N	111° 17.773'W
Repeater		39° 51.860'N	111° 41.232'W
Retardant/Mud Pit	Retardant Tank	40° 01.978'N	111° 40.449'W
Sling Site	Bonneville	39° 54.139'N	111° 28.418'W
Sling Site	Fork	39° 47.658'N	111° 38.473'W
Sling Site	Hilltop	39° 49.114'N	111° 36.240'W
Sling Site	Trail	39° 47.697'N	111° 37.958'W
Sling Site	Warm Spring	39° 59.833'N	111° 59.686'W
Staging Area	Cedar Haven Staging	39° 58.498'N	111° 20.175'W
Staging Area	Spanish River Park	40° 01.353'N	111° 29.928'W
Value at Risk	Covered Bridge	40° 02.678'N	111° 32.388'W
Value at Risk	Diamond Fork Guard Station	40° 09.518'N	111° 19.741'W
Water Tank	Heliwell	40° 01.713'N	111° 40.384'W