

Pole Creek and Bald Mt.

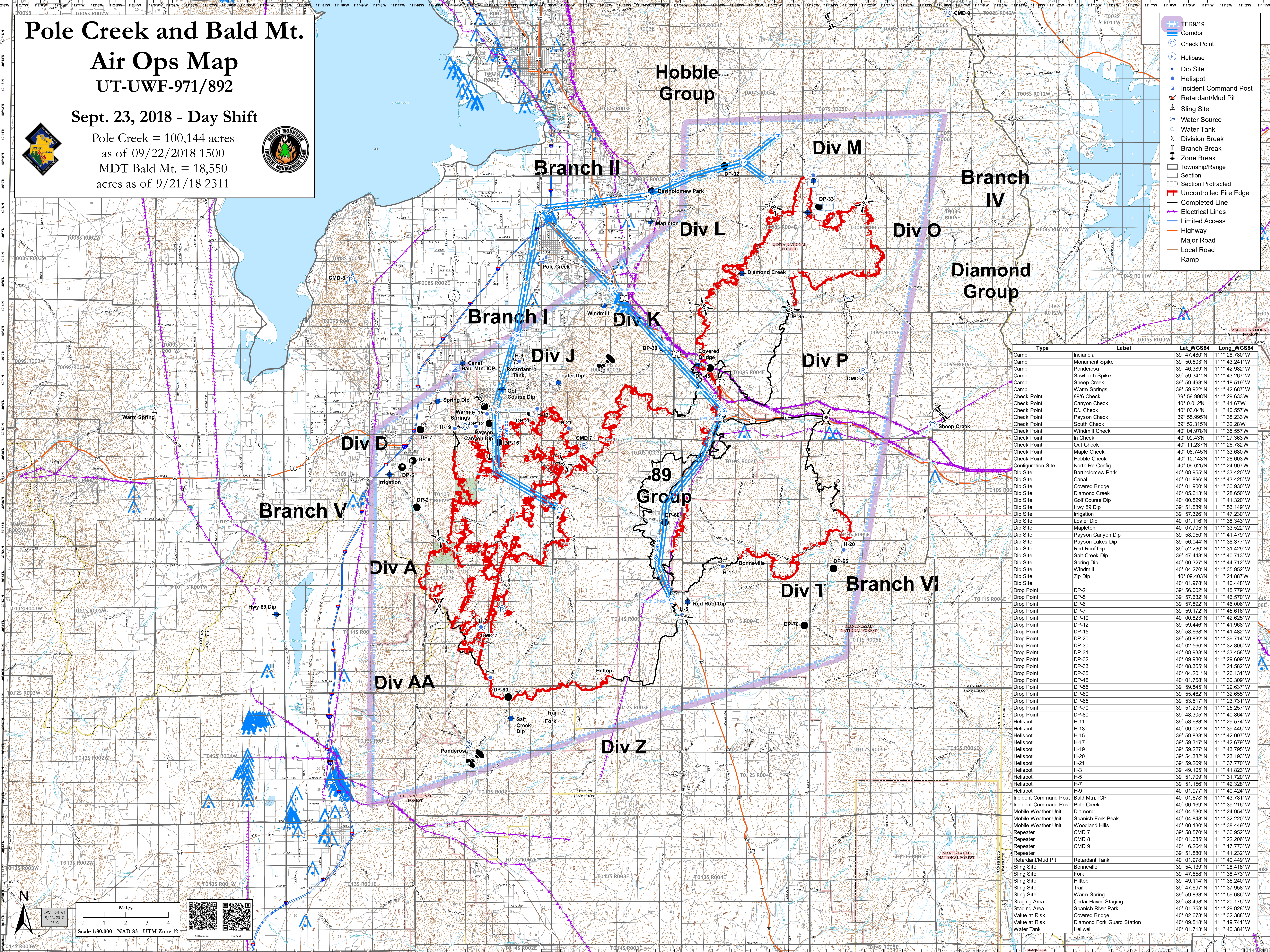
Air Ops Map UT-UWF-971/892

Sept. 23, 2018 - Day Shift

Pole Creek = 100,144 acres
as of 09/22/2018 1500
MDT Bald Mt. = 18,550
acres as of 9/21/18 2311



- TFR9/19 Corridor
- Check Point
- Helibase
- Dip Site
- Helispot
- Incident Command Post
- Retardant/Mud Pit
- Sling Site
- Water Source
- Water Tank
- Division Break
- Branch Break
- Zone Break
- Township/Range
- Section
- Section Protracted
- Uncontrolled Fire Edge
- Completed Line
- Electrical Lines
- Limited Access
- Highway
- Major Road
- Local Road
- Ramp



Type	Label	Lat_WGS84	Long_WGS84
Camp	Indianola	39° 47.480' N	111° 28.780' W
Camp	Monument Spike	39° 50.603' N	111° 43.241' W
Camp	Ponderosa	39° 46.389' N	111° 42.982' W
Camp	Sawtooth Spike	39° 59.341' N	111° 43.267' W
Camp	Warm Springs	39° 59.403' N	111° 18.519' W
Check Point	89/6 Check	39° 59.922' N	111° 42.687' W
Check Point	Canyon Check	39° 59.988' N	111° 29.633' W
Check Point	DJ Check	40° 03.042' N	111° 40.557' W
Check Point	Payson Check	39° 55.965' N	111° 38.233' W
Check Point	South Check	39° 52.315' N	111° 32.287' W
Check Point	Windmill Check	40° 04.978' N	111° 35.557' W
Check Point	In Check	40° 09.433' N	111° 27.363' W
Check Point	Out Check	40° 11.237' N	111° 26.782' W
Check Point	Maple Check	40° 08.745' N	111° 33.680' W
Check Point	Hobble Check	40° 10.143' N	111° 28.603' W
Configuration Site	North Re-Config.	40° 09.625' N	111° 24.907' W
Dip Site	Bartholomew Park	40° 08.955' N	111° 33.420' W
Dip Site	Covered Bridge	40° 01.900' N	111° 30.930' W
Dip Site	Diamond Creek	40° 05.613' N	111° 28.650' W
Dip Site	Golf Course Dip	40° 00.829' N	111° 41.320' W
Dip Site	Hwy 89 Dip	39° 51.589' N	111° 53.149' W
Dip Site	Irrigation	39° 57.326' N	111° 47.230' W
Dip Site	Loafer Dip	40° 01.116' N	111° 38.343' W
Dip Site	Mapleton	40° 07.705' N	111° 33.522' W
Dip Site	Payson Canyon Dip	39° 59.950' N	111° 41.479' W
Dip Site	Red Roof Dip	39° 56.044' N	111° 38.377' W
Dip Site	Salt Creek Dip	39° 52.230' N	111° 31.429' W
Dip Site	Spring Dip	39° 47.443' N	111° 40.713' W
Dip Site	Warm Springs	40° 00.327' N	111° 44.712' W
Dip Site	Windmill	40° 04.270' N	111° 35.952' W
Dip Site	Zip Dip	40° 09.403' N	111° 24.887' W
Dip Site	DP-1	40° 01.978' N	111° 40.448' W
Drop Point	DP-2	39° 56.002' N	111° 45.779' W
Drop Point	DP-5	39° 57.632' N	111° 46.570' W
Drop Point	DP-6	39° 57.892' N	111° 46.006' W
Drop Point	DP-7	39° 59.172' N	111° 45.616' W
Drop Point	DP-10	40° 00.823' N	111° 42.625' W
Drop Point	DP-12	39° 59.446' N	111° 41.968' W
Drop Point	DP-15	39° 58.668' N	111° 41.482' W
Drop Point	DP-20	39° 59.832' N	111° 39.714' W
Drop Point	DP-30	40° 02.566' N	111° 32.806' W
Drop Point	DP-31	40° 08.938' N	111° 33.458' W
Drop Point	DP-32	40° 09.980' N	111° 29.609' W
Drop Point	DP-33	40° 08.355' N	111° 24.582' W
Drop Point	DP-35	40° 04.201' N	111° 26.131' W
Drop Point	DP-45	40° 01.758' N	111° 30.309' W
Drop Point	DP-60	39° 59.945' N	111° 29.637' W
Drop Point	DP-65	39° 55.462' N	111° 32.655' W
Drop Point	DP-66	39° 53.617' N	111° 23.731' W
Drop Point	DP-70	39° 51.295' N	111° 25.257' W
Drop Point	DP-80	39° 48.305' N	111° 40.864' W
Helispot	H-11	39° 53.683' N	111° 29.574' W
Helispot	H-13	40° 00.052' N	111° 39.445' W
Helispot	H-15	39° 59.833' N	111° 42.097' W
Helispot	H-17	39° 59.317' N	111° 42.679' W
Helispot	H-19	39° 59.227' N	111° 43.795' W
Helispot	H-20	39° 54.382' N	111° 23.193' W
Helispot	H-21	39° 59.269' N	111° 37.770' W
Helispot	H-3	39° 49.105' N	111° 41.823' W
Helispot	H-5	39° 51.709' N	111° 31.720' W
Helispot	H-7	39° 51.156' N	111° 42.328' W
Helispot	H-9	40° 01.977' N	111° 40.424' W
Incident Command Post	Bald Mtn. ICP	40° 01.678' N	111° 43.781' W
Incident Command Post	Pole Creek	40° 06.169' N	111° 39.216' W
Mobile Weather Unit	Diamond	40° 04.530' N	111° 24.954' W
Mobile Weather Unit	Spanish Fork Peak	40° 04.848' N	111° 32.220' W
Mobile Weather Unit	Woodland Hills	40° 00.130' N	111° 38.449' W
Repeater	CMD 7	39° 58.570' N	111° 36.952' W
Repeater	CMD 8	40° 01.685' N	111° 22.206' W
Repeater	CMD 9	40° 16.264' N	111° 17.773' W
Repeater	CMD 9	39° 51.880' N	111° 41.232' W
Retardant/Mud Pit	Retardant Tank	40° 01.978' N	111° 40.449' W
Sling Site	Bonneville	39° 54.139' N	111° 28.418' W
Sling Site	Fork	39° 47.658' N	111° 38.473' W
Sling Site	Hilltop	39° 49.114' N	111° 36.240' W
Sling Site	Trail	39° 47.697' N	111° 37.958' W
Sling Site	Warm Spring	39° 59.833' N	111° 59.686' W
Staging Area	Cedar Haven Staging	39° 58.498' N	111° 20.175' W
Staging Area	Spanish River Park	40° 01.353' N	111° 29.928' W
Value at Risk	Covered Bridge	40° 02.678' N	111° 32.388' W
Value at Risk	Diamond Fork Guard Station	40° 09.518' N	111° 19.741' W
Water Tank	Hellwell	40° 01.713' N	111° 40.384' W

Scale 1:80,000 - NAD 83 - UTM Zone 12

Miles 0 1 2 3 4

DW - GB#1
W 22 2018
2x02