

Pole Creek and Bald Mtn.

Briefing Map

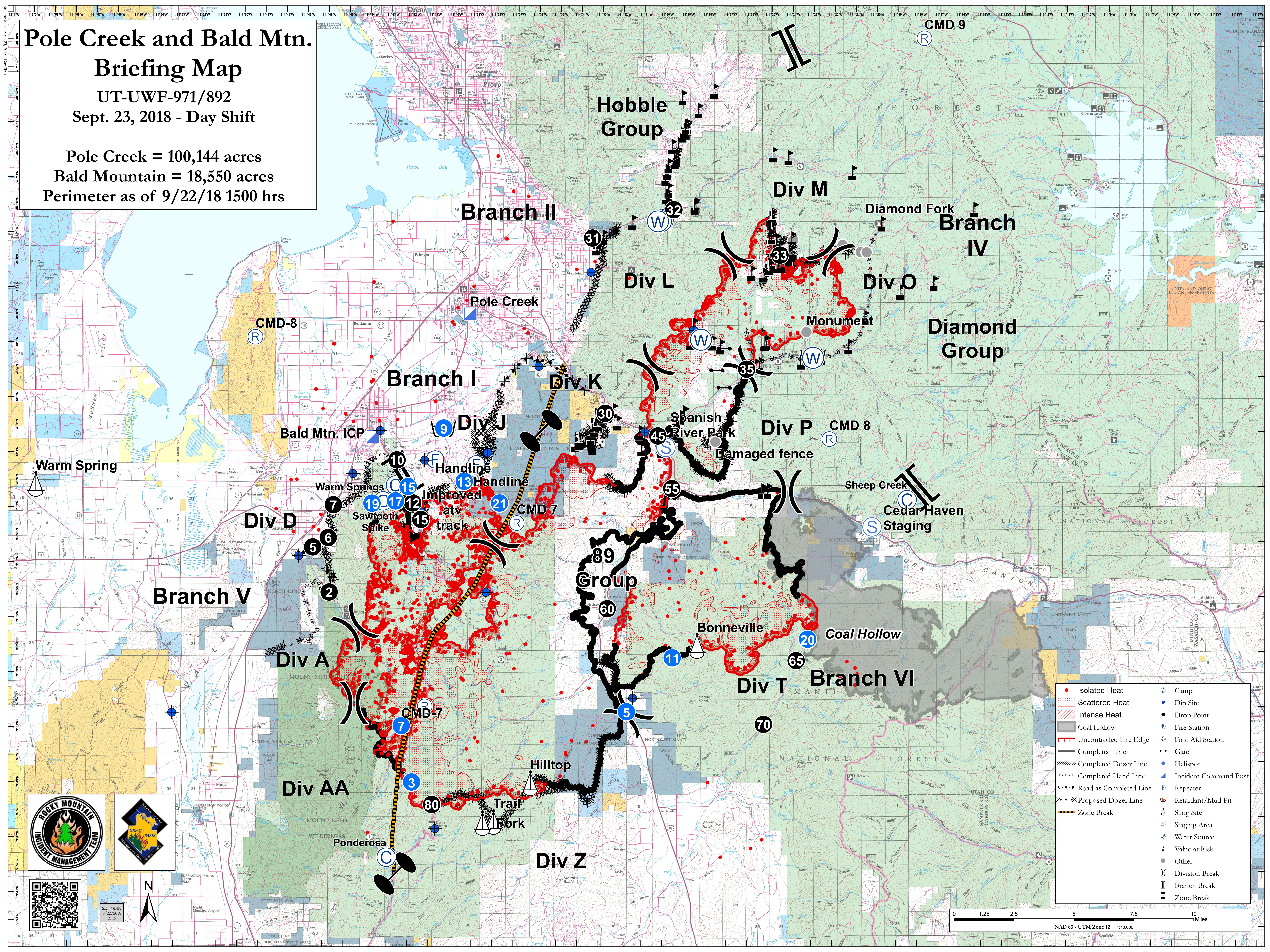
UT-UWF-971/892

Sept. 23, 2018 - Day Shift

Pole Creek = 100,144 acres

Bald Mountain = 18,550 acres

Perimeter as of 9/22/18 1500 hrs



● Isolated Heat	Ⓢ Camp
▨ Scattered Heat	◆ Dip Site
▨ Intense Heat	● Drop Point
▨ Coal Hollow	Ⓡ Fire Station
— Uncontrolled Fire Edge	Ⓡ First Aid Station
— Completed Line	Ⓡ Gate
— Completed Dozer Line	Ⓡ Helispot
— Completed Hand Line	Ⓡ Incident Command Post
— Road as Completed Line	Ⓡ Repeater
✕ Proposed Dozer Line	Ⓡ Retardant/Mud Pit
— Zone Break	Ⓡ Sling Site
	Ⓡ Staging Area
	Ⓡ Water Area
	Ⓡ Value at Risk
	Ⓡ Other
	Ⓡ Division Break
	Ⓡ Branch Break
	Ⓡ Zone Break

