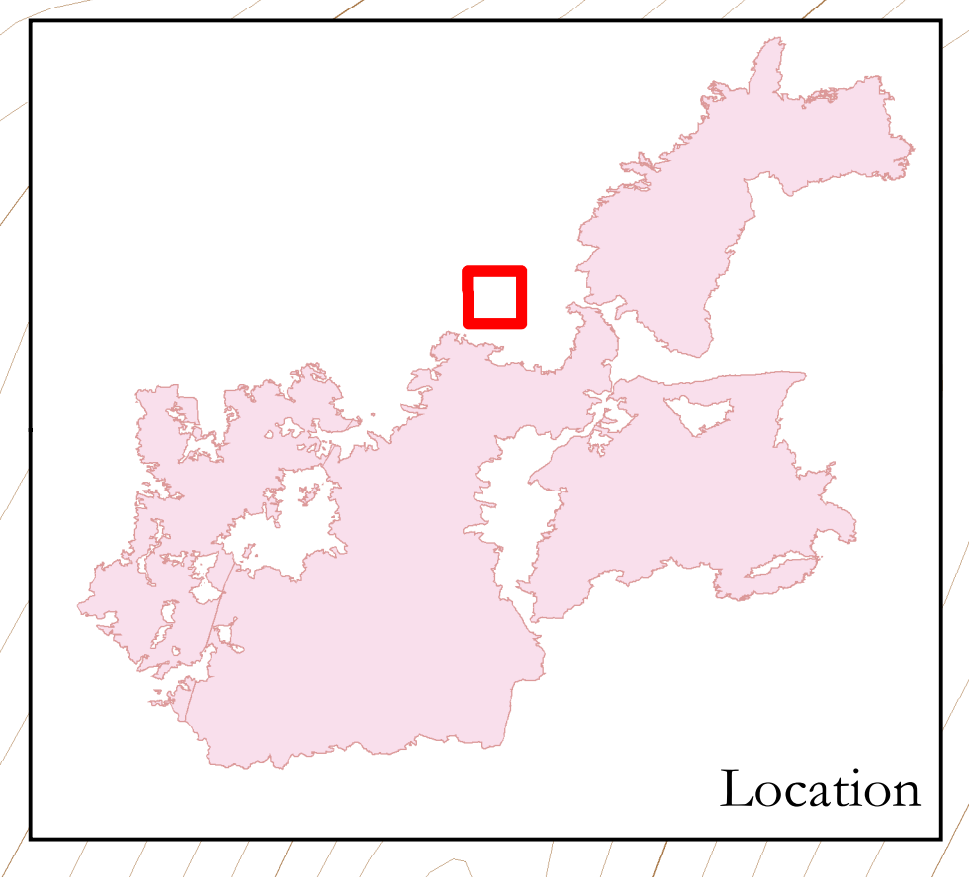
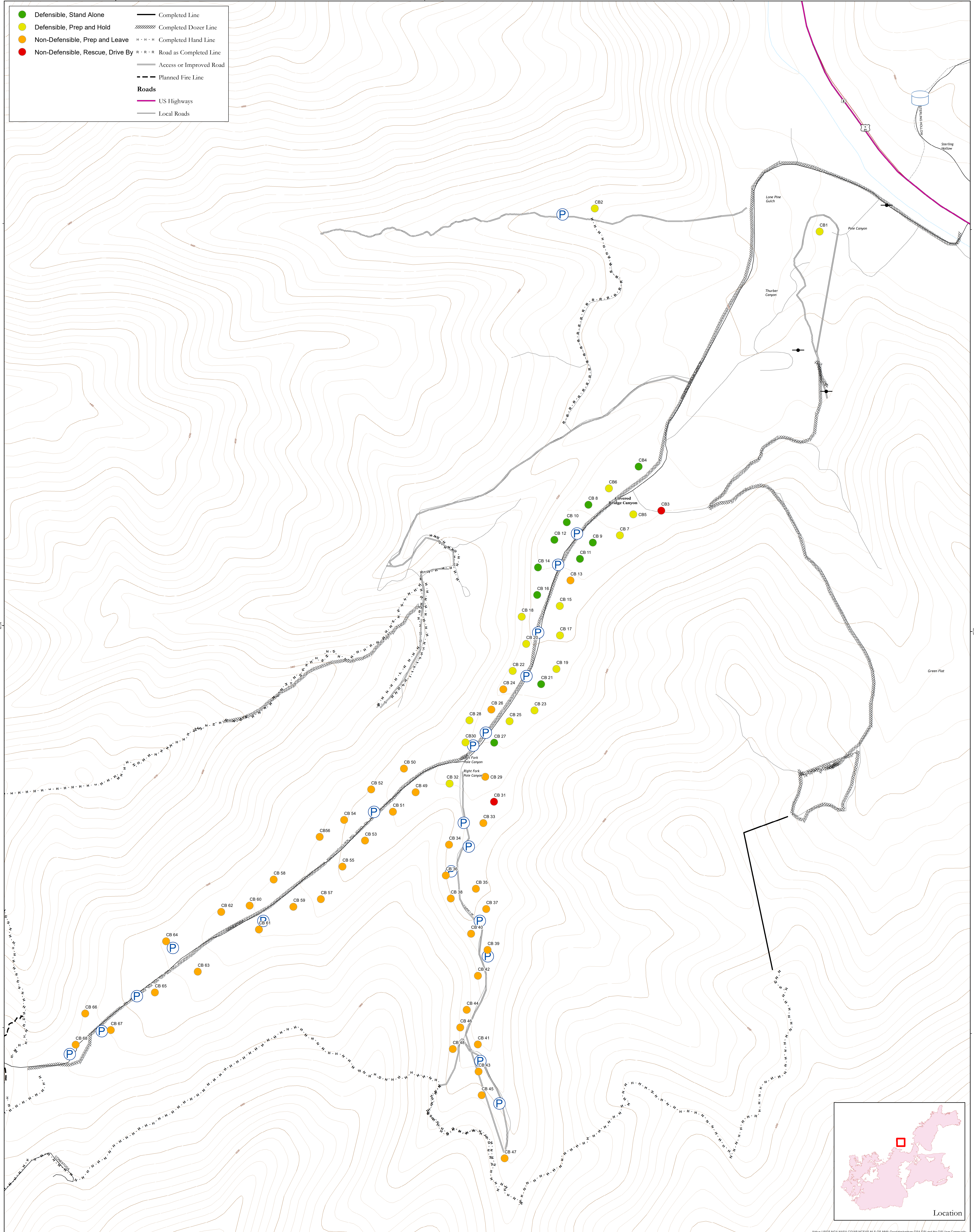
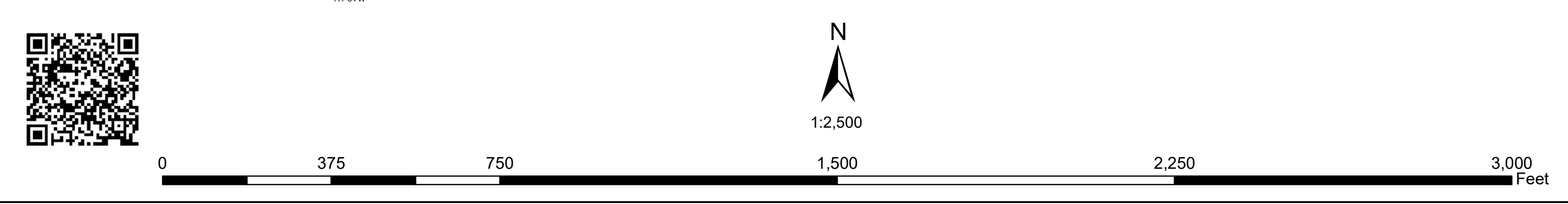


- Defensible, Stand Alone
- Defensible, Prep and Hold
- Non-Defensible, Prep and Leave
- Non-Defensible, Rescue, Drive By
- Completed Line
- ⊗ Completed Dozer Line
- ⋯ Completed Hand Line
- ⋯ Road as Completed Line
- Access or Improved Road
- ⋯ Planned Fire Line
- Roads**
- US Highways
- Local Roads



Location



## Pole Creek - UT-UWF-971 Structure Protection (Covered Bridge)

Sept. 24, 2018 - Day Shift

Pole Creek = 101,423 acres as of 9/22/18 at 2230; Bald Mt. = 18,596 acres as of 9/22/18 at 2230



NAD 83 - UTM Zone 12  
BM - GB#1 - 9/23/2018 - 2249 hrs

Airphoto: USGS; NOAA; NASA; CGIAR; MCEAS; NLS; GIS: NARA; Geodatabase: USGS, GSI and the GIS User Community