

# Pole Creek Bald Mtn IAP Map

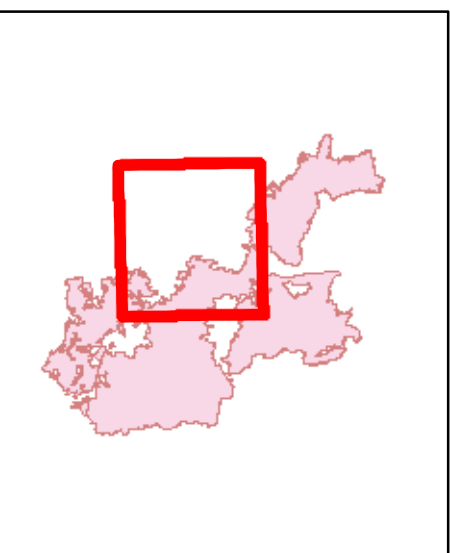
Div K

UT-UWF-000971  
September 24, 2018  
Day Shift

Pole Creek 101,423 acres  
as of 9/22/18 2230 MDT  
Bald Mtn. 18,596 acres  
as of 9/22/2018 2230 MDT

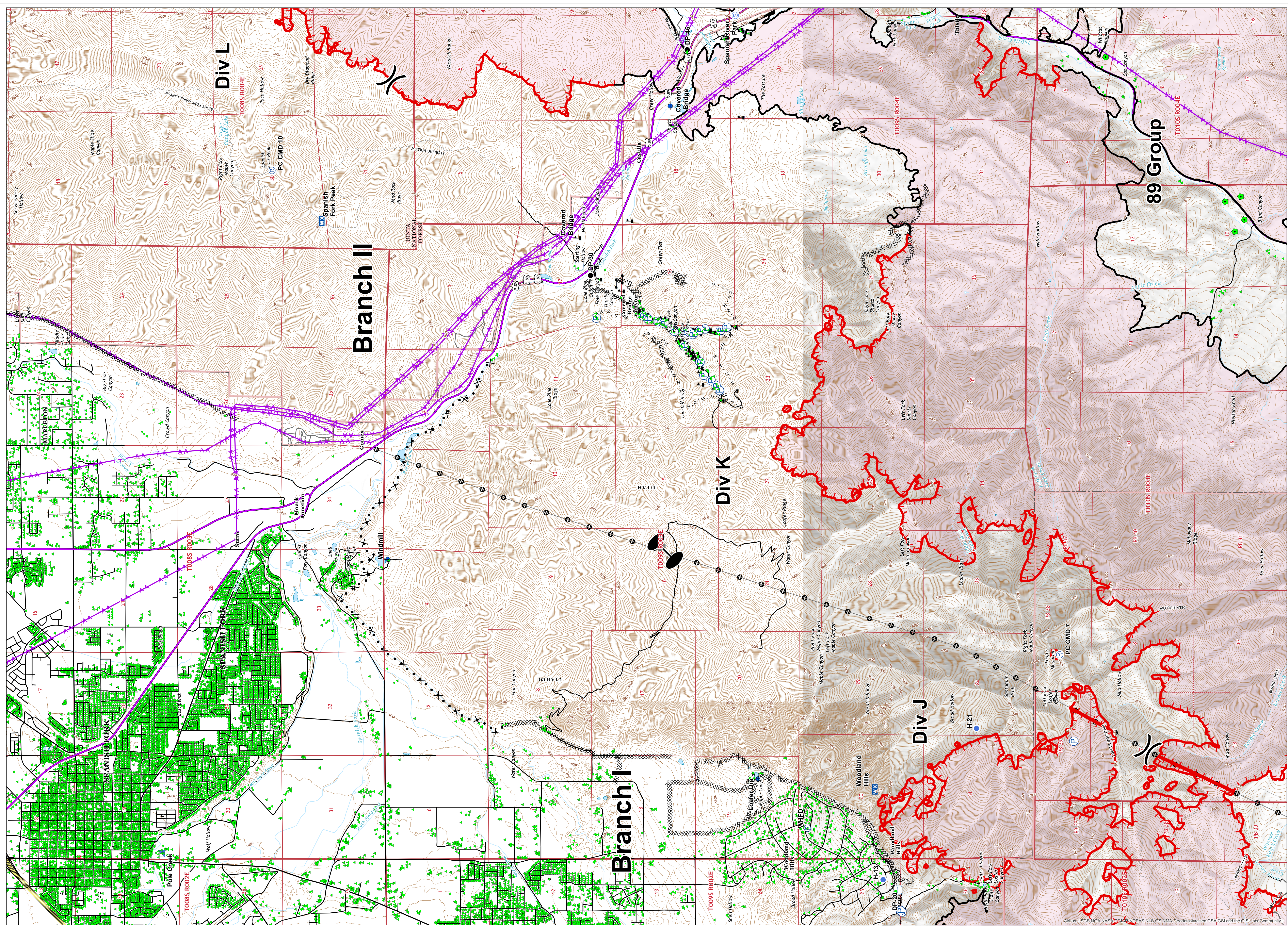
Page 10 of 12

- Dip Site
- Fire Station
- Gate
- Helispot
- Incident Command Post
- Mobile Weather Unit
- Pump
- Repeater
- Staging Area
- Water Tank
- Value at Risk
- Division Break
- Zone Break
- Buildings
- Mines
- Electrical Lines
- Uncontrolled Fire Edge
- Completed Line
- Completed Dozer Line
- Completed Hand Line
- Road as Completed Line
- Proposed Dozer Line
- Zone



Miles  
0 0.1 0.2 0.3 0.4 0.5

NAD 83  
UTM Zone 12  
BM - GB#1  
9/23/2018  
2222



Airbase: USGS, NGA, NAS, etc. © 2018 NCEAS, NLS, DS, NMA, Geodatasystems, GSA, GSI and the GIS User Community