

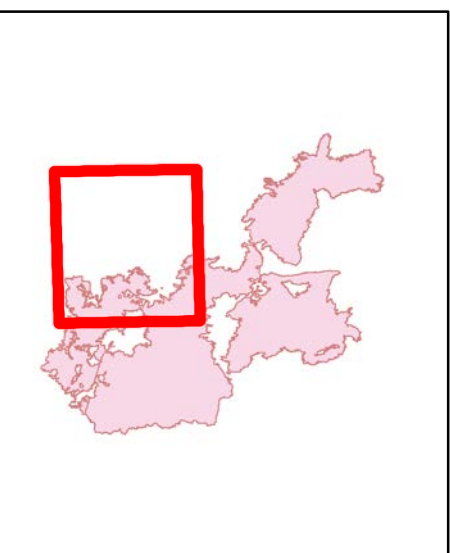
**Pole Creek
Bald Mtn
Sup Repair
IAP Map**

Div J

UT-UWF-000971
September 30, 2018
Day Shift

Perimeter as of
9/28/2018 at 2045 MDT
Page 2 of 12

- Legend**
- Camp
 - Dip Site
 - Fire Station
 - Fire Aid Station
 - Gate
 - Hidopet
 - Incinerator Command Post
 - Public Weather Unit
 - Prong
 - Reservoir
 - Randomizer Map Pin
 - Shaping Area
 - Water Tank
 - Value at Risk
 - Other
 - Branch Trunk
 - Habitat
 - Completed - Impacted
 - Paper Needed
 - Other - See Comments
 - Unknown
 - Completed - Impacted
 - In Progress
 - Paper Needed
 - Other - See Comments
 - Unknown
 - Electrical Lines
 - Unsuccessful Fire Edge
 - Completed Line
 - Completed Diver Line
 - H - Completed Hand Line
 - R - Road as Completed Line
 - Proposed Diver Line
 - Zone
 - Heat Sources
 - Intense Heat
 - Scattered Heat
 - Sharp Penetration



Miles
0 0.1 0.2 0.3 0.4 0.5

NAD 83
UTM Zone 12

CAIMT1
9/30/2018
0038

