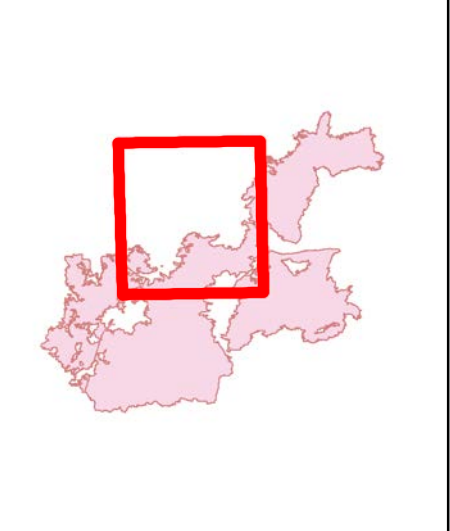


**Pole Creek
Bald Mtn
Sup Repair
IAP Map**

Div K
UT-UWF-000971
September 30, 2018
Day Shift

Perimeter as of
9/28/2018 at 2045 MDT
Page 10 of 12

- Legend**
- Dip Site
 - Fire Station
 - Road
 - Hidex
 - Inchert Command Post
 - Mobile Weather Unit
 - Pump
 - Reservoir
 - Spring
 - Water Tank
 - Valve or Risk
 - Valve
 - Division Break
 - Branch Break
 - Hidex
 - Repair Needed
 - Other - See Comments
 - Unknown
 - Completed - Inspected
 - Repair Needed
 - Other - See Comments
 - Unknown
 - Missed
 - Electrical Lines
 - Unsuccessful Fire Edge
 - Completed Drive Line
 - H - Completed Hand Line
 - R - Road on Completed Line
 - Proposed Drive Line
 - Zone
 - Heat Sources
 - Horse Heat
 - Scattered Heat
 - Heat Penetration



Miles
0 0.1 0.2 0.3 0.4 0.5

NAD 83
UTM Zone 12

CADMT
9/30/2018
0415

