

**Pole Creek  
Bald Mtn  
Sup Repair  
IAP Map**

**Div P**  
UT-UWF-000971  
September 30, 2018  
Day Shift

Perimeter as of  
9/28/2018 at 2045 MDT  
Page 7 of 12

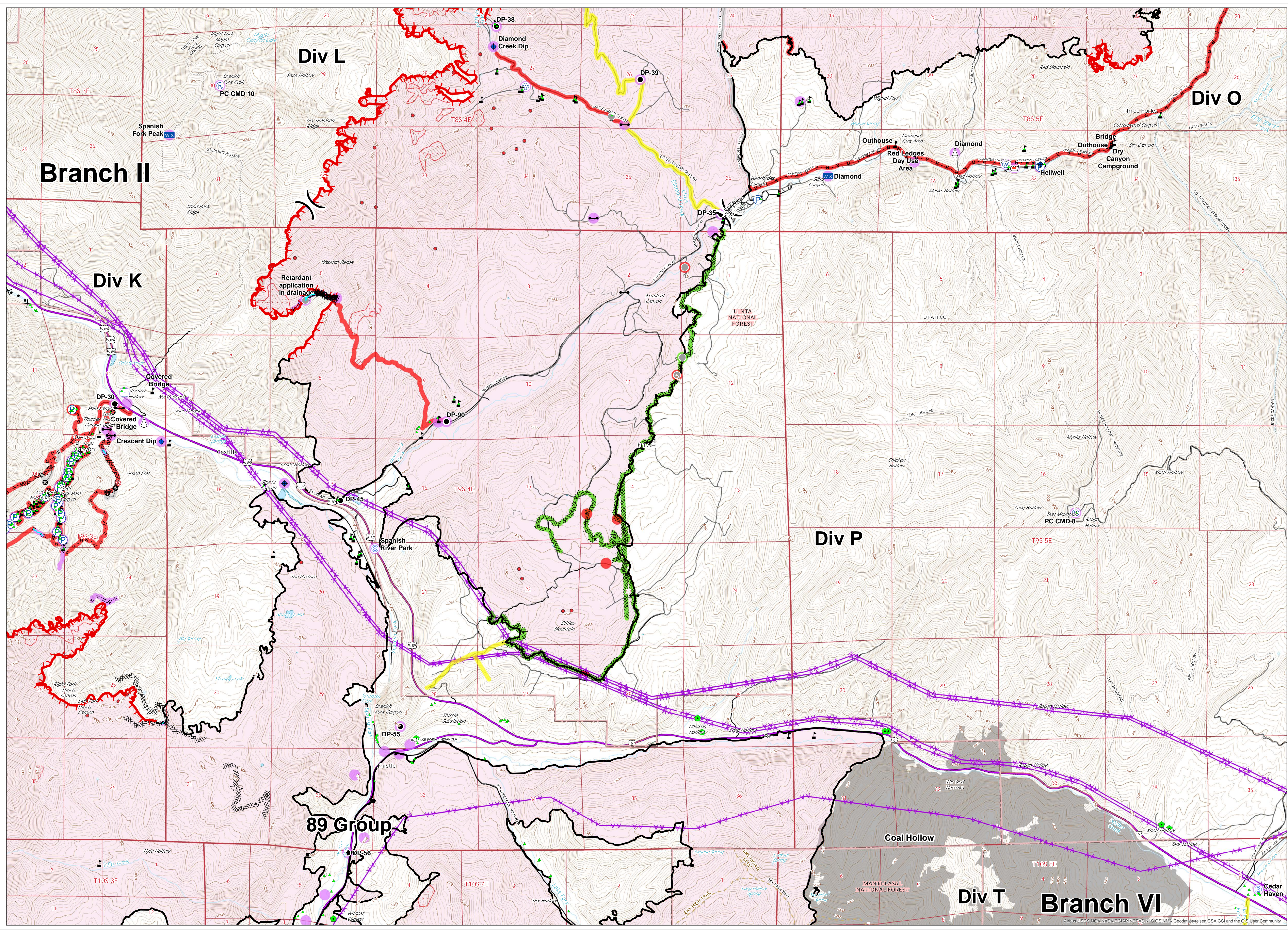
- Legend
- Dip Site
- Fire
- Water Weather Line
- Pump
- Reservoir
- Reservoir (that fire)
- Wing Site
- Wing Area
- Water Source
- Water Tank
- Value at Risk
- Value
- Division Break
- Completed - Inspected
- Completed - Inspected
- In Progress
- Repair Needed
- Other - See Comments
- Unknown
- Electric Lines
- Unconstr'd Fire Edge
- Completed Line
- Completed Diver Line
- Completed Hand Line
- Build on Completed Line
- Proposed Diver Line
- Zone
- Load Station Fire
- Water Source
- Interior Heat
- Scattered Heat
- Heat Penetration



Miles  
0 0.1 0.2 0.3 0.4 0.5

NAD 83  
UTM Zone 12

CAMM1  
9/30/2018  
0900



Arboretum, USGS, NGA, NASA, CGIAR, NCEAS, NLS, OS, NMA, Geodatasystem, GSA, GSI and the GIS User Community