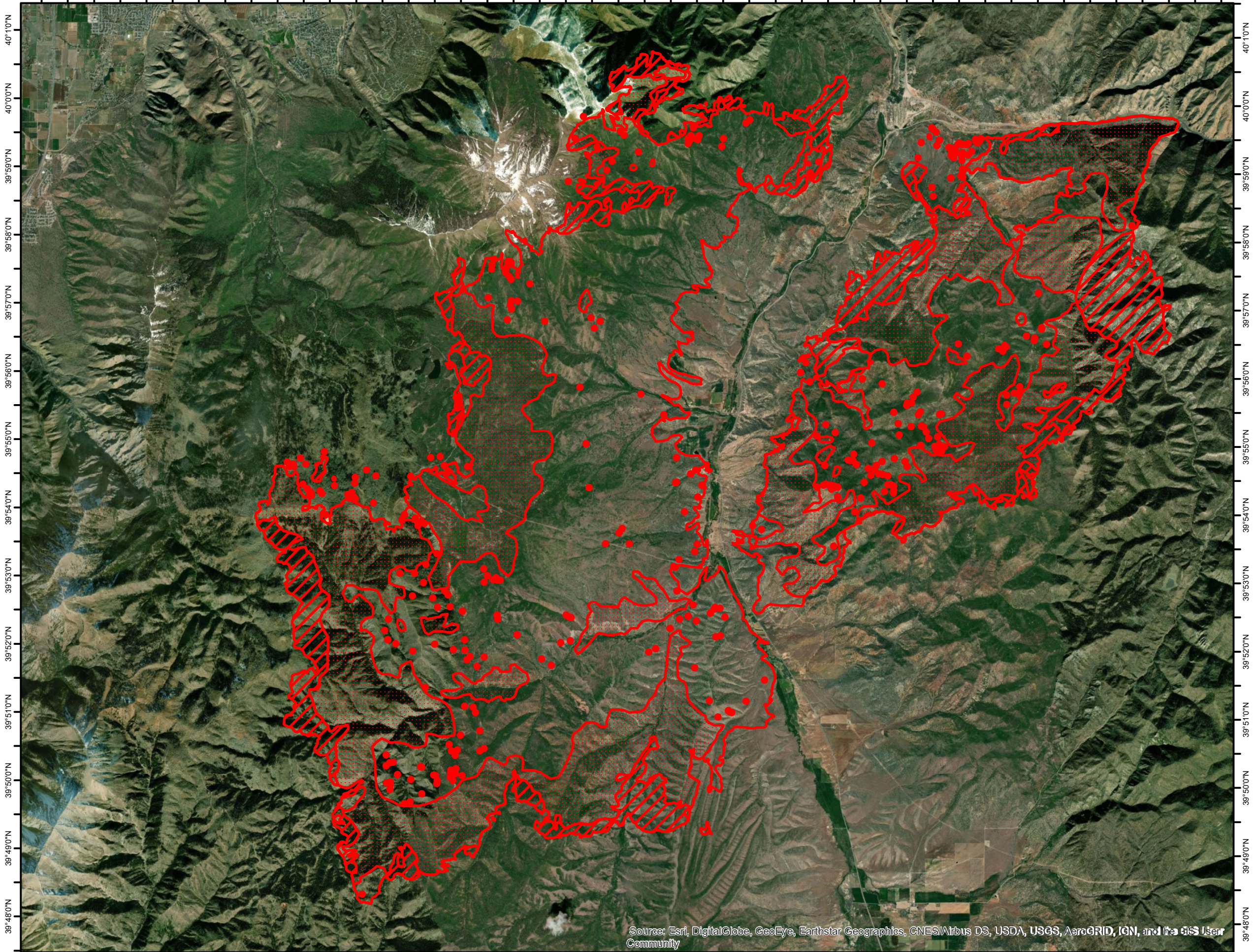


111°45'30"W 111°44'30"W 111°43'30"W 111°42'30"W 111°41'30"W 111°40'30"W 111°39'30"W 111°38'30"W 111°37'30"W 111°36'30"W 111°35'30"W 111°34'30"W 111°33'30"W 111°32'30"W 111°31'30"W 111°30'30"W 111°29'30"W 111°28'30"W 111°27'30"W 111°26'30"W 111°25'30"W 111°24'30"W 111°23'30"W



INFRARED MAP
Pole Creek (UT_UWF_000971)
Flight : Sept 16, 2018 @ 0013 MDT
Heat Acres: 61,248
IRIN Andrew Mock

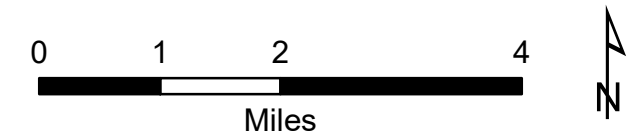


40°10'N
40°00'N
39°59'0"N
39°58'0"N
39°57'0"N
39°56'0"N
39°55'0"N
39°54'0"N
39°53'0"N
39°52'0"N
39°51'0"N
39°50'0"N
39°49'0"N
39°48'0"N

40°10'N
40°00'N
39°59'0"N
39°58'0"N
39°57'0"N
39°56'0"N
39°55'0"N
39°54'0"N
39°53'0"N
39°52'0"N
39°51'0"N
39°50'0"N
39°49'0"N
39°48'0"N

111°45'30"W 111°44'30"W 111°43'30"W 111°42'30"W 111°41'30"W 111°40'30"W 111°39'30"W 111°38'30"W 111°37'30"W 111°36'30"W 111°35'30"W 111°34'30"W 111°33'30"W 111°32'30"W 111°31'30"W 111°30'30"W 111°29'30"W 111°28'30"W 111°27'30"W 111°26'30"W 111°25'30"W 111°24'30"W 111°23'30"W

Source: Esri, DigitalGlobe, GeoEye, Earthstar Geographics, CNES/Airbus DS, USDA, USGS, AeroGRID, IGN, and the GIS User Community



Legend

- Isolated Heat Sources
- Heat Perimeter
- / Intense Heat
- Scattered Heat