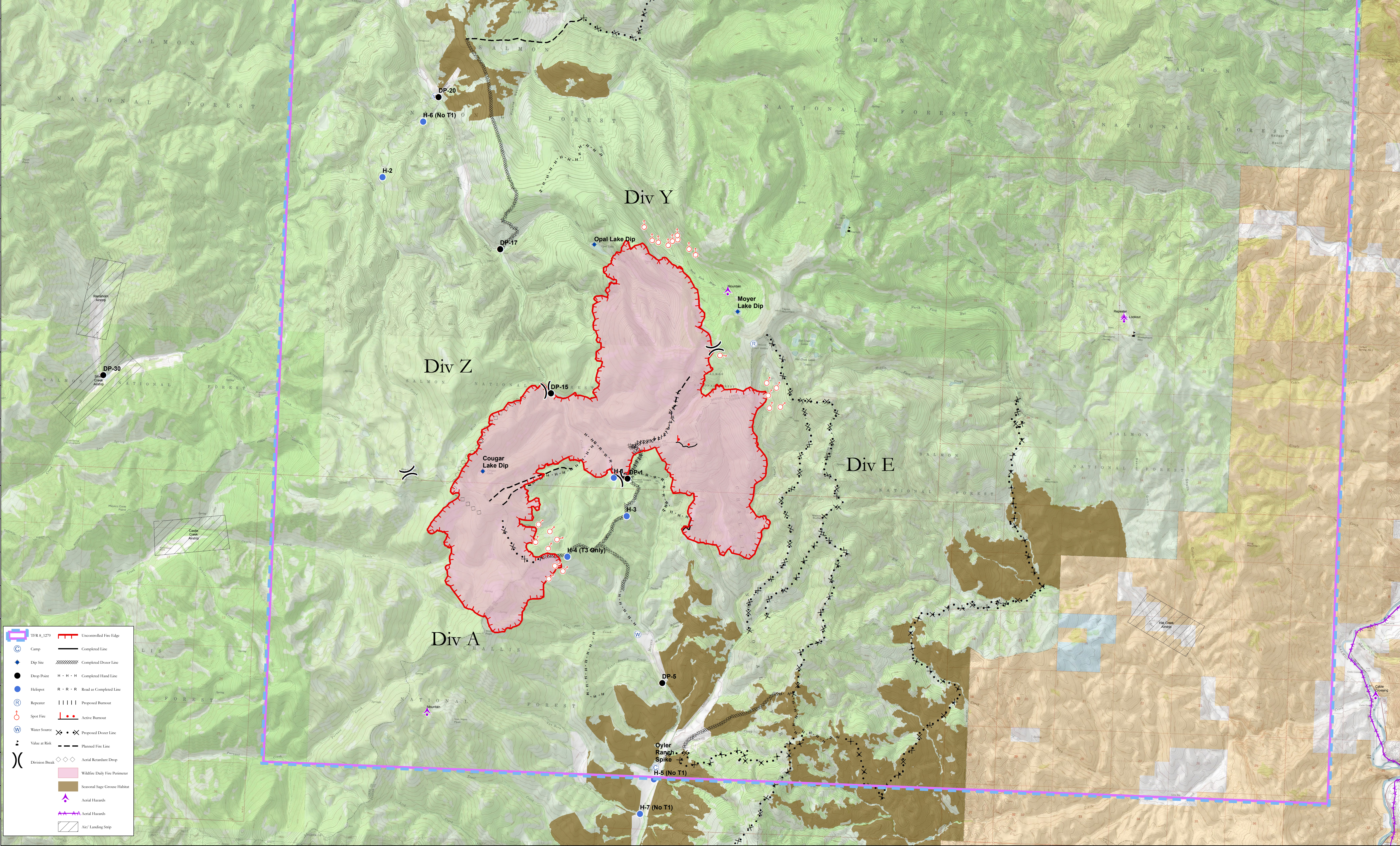


Incident Name	Feature Category (Point Type)	Label	Latitude	Longitude
Rabbit Foot	Camp	Oyler Ranch Spike	44° 46.180'	-114° 15.212'
Rabbit Foot	Dip Site	Cougar Lake Dip	44° 50.517'	-114° 19.099'
Rabbit Foot	Dip Site	Moyer Lake Dip	44° 53.064'	-114° 13.862'
Rabbit Foot	Dip Site	Opal Lake Dip	44° 53.985'	-114° 16.943'
Rabbit Foot	Drop Point	DP-20	44° 56.101'	-114° 20.355'
Rabbit Foot	Drop Point	DP-5	44° 47.452'	-114° 15.140'
Rabbit Foot	Drop Point	DP-1	44° 50.497'	-114° 16.043'
Rabbit Foot	Drop Point	DP-15	44° 51.728'	-114° 17.730'
Rabbit Foot	Drop Point	DP-17	44° 53.857'	-114° 18.925'
Rabbit Foot	Helispot	H-2	44° 54.865'	-114° 21.466'
Rabbit Foot	Helispot	H-1	44° 50.501'	-114° 16.330'
Rabbit Foot	Helispot	H-3	44° 49.935'	-114° 16.030'
Rabbit Foot	Helispot	H-4 (T3 Only)	44° 49.288'	-114° 17.243'
Rabbit Foot	Helispot	H-5 (No T1)	44° 46.003'	-114° 15.233'
Rabbit Foot	Incident Command Post		44° 30.677'	-114° 13.621'
Rabbit Foot	Repeater	CMD7	44° 52.595'	-114° 13.492'
Rabbit Foot	Spot Fire		44° 52.515'	-114° 16.230'
Rabbit Foot	Spot Fire		44° 52.394'	-114° 14.194'



Rabbit Foot - ID-SCF-018152 - Air Operations Map

August 12, 2018
IR-10,015 at 8/12/18 01:05

