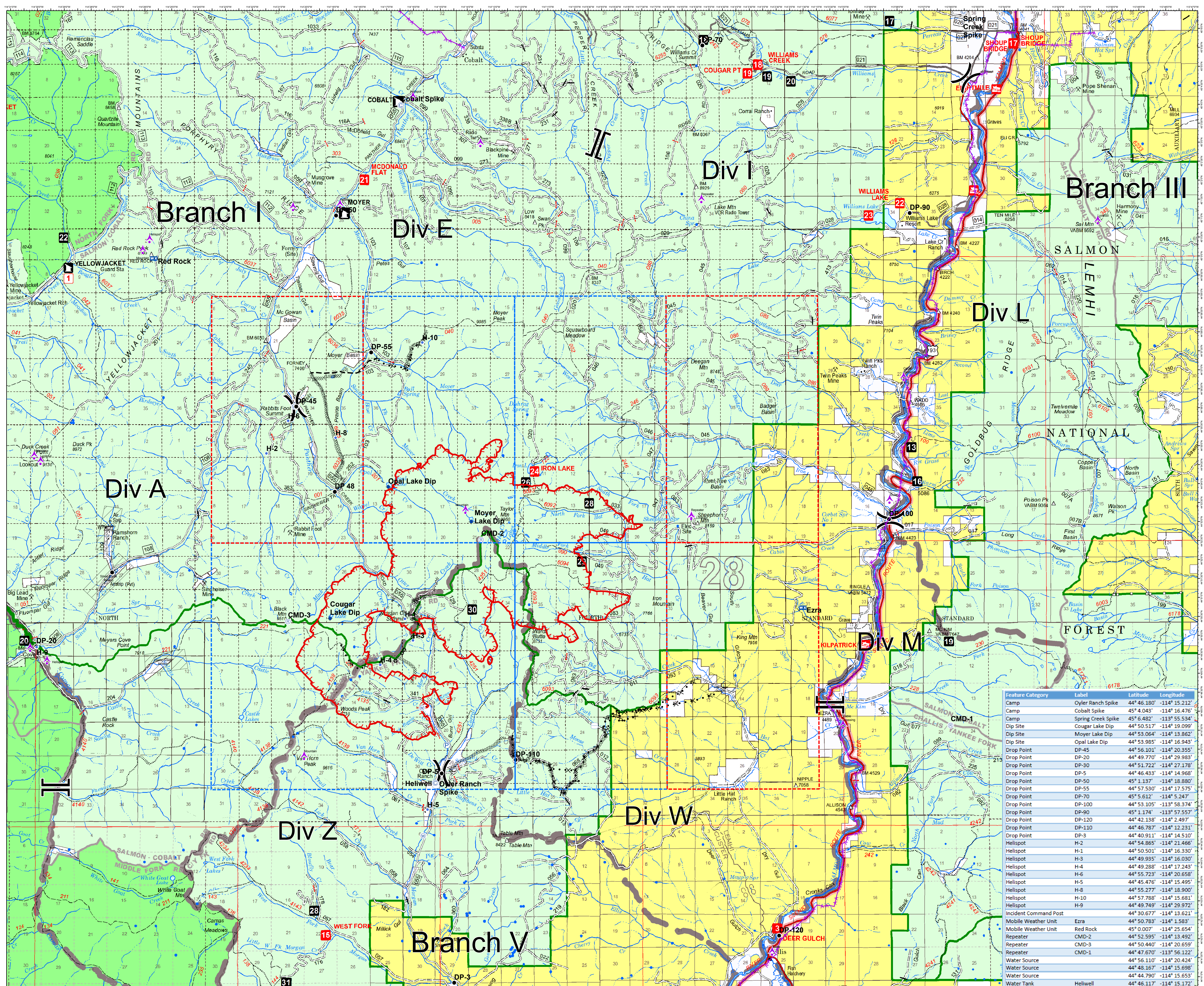


# Air Operations

Rabbit Foot  
ID-SCF-018152  
08/15/2018  
26,294 Acres



- Aerial Hazards
- Air/ Landing Strip
- IA Critical
- IA
- Camp
- Dip Site
- Drop Point
- Gate
- Helipot
- Mobile Weather Unit
- Pump
- Repeater
- Water Source
- Water Tank
- Division Break
- Branch Break
- Uncontrolled Fire Edge
- Completed Dozer Line
- Completed Hand Line
- Road as Completed Line
- Proposed Dozer Line
- Planned Fire Line
- Other



Feature Category	Label	Latitude	Longitude
Camp	Oyler Ranch Spike	44° 46.180'	-114° 15.212'
Camp	Cobalt Spike	45° 4.043'	-114° 16.476'
Camp	Spring Creek Spike	45° 6.482'	-113° 55.534'
Dip Site	Cougar Lake Dip	44° 50.517'	-114° 19.099'
Dip Site	Moyer Lake Dip	44° 53.064'	-114° 13.862'
Dip Site	Opal Lake Dip	44° 53.985'	-114° 16.943'
Drop Point	DP-45	44° 56.101'	-114° 20.355'
Drop Point	DP-20	44° 49.770'	-114° 29.983'
Drop Point	DP-30	44° 51.722'	-114° 27.178'
Drop Point	DP-5	44° 46.433'	-114° 14.968'
Drop Point	DP-50	45° 1.137'	-114° 18.880'
Drop Point	DP-55	44° 57.530'	-114° 17.575'
Drop Point	DP-70	45° 5.612'	-114° 5.247'
Drop Point	DP-100	44° 53.105'	-113° 58.374'
Drop Point	DP-90	45° 1.174'	-113° 57.557'
Drop Point	DP-120	44° 42.138'	-114° 2.497'
Drop Point	DP-110	44° 46.787'	-114° 12.231'
Drop Point	DP-3	44° 40.911'	-114° 14.510'
Helipot	H-2	44° 54.865'	-114° 21.466'
Helipot	H-1	44° 50.501'	-114° 16.330'
Helipot	H-3	44° 49.935'	-114° 16.030'
Helipot	H-4	44° 49.288'	-114° 17.243'
Helipot	H-6	44° 55.723'	-114° 20.658'
Helipot	H-5	44° 45.476'	-114° 15.495'
Helipot	H-8	44° 55.277'	-114° 18.900'
Helipot	H-10	44° 57.788'	-114° 15.681'
Helipot	H-9	44° 49.749'	-114° 29.972'
Incident Command Post		44° 30.677'	-114° 13.621'
Mobile Weather Unit	Ezra	44° 50.783'	-114° 1.583'
Mobile Weather Unit	Red Rock	45° 0.007'	-114° 25.654'
Repeater	CMD-2	44° 52.595'	-114° 13.492'
Repeater	CMD-3	44° 50.440'	-114° 20.659'
Repeater	CMD-1	44° 47.670'	-113° 56.122'
Water Source		44° 56.110'	-114° 20.424'
Water Source		44° 48.167'	-114° 15.698'
Water Source		44° 44.790'	-114° 15.653'
Water Tank	Helivell	44° 46.117'	-114° 15.172'