

U.S. DEPARTMENT OF THE INTERIOR
Bureau of Land Management, Idaho Falls District
Salmon Field Office, 1205 South Challis Street, Salmon, ID 83467

EMERGENCY CLOSURE OF PUBLIC LAND: Lemhi County, Idaho
AGENCY: Bureau of Land Management, Idaho Falls District, Salmon Field Office, Idaho
ACTION: Temporary closure of public land in Lemhi County, Idaho.

SUMMARY: The Idaho Falls District, Bureau of Land Management (BLM) is giving notice that it is temporarily closing a portion of the Salmon Field Office associated with the Rabbit Foot Fire from August 18, 2018 until further notice.

AREA DESCRIBED: The roads closed are the Cabin Creek Road System which includes the Cabin Creek and Ringle Creek Roads and all spurs that connect to those roads. This closes all roads on BLM managed lands in Township 18 North, Range 21 East, Sections 19, 20, 21, 29, 30 and 31; Township 18 North, Range 20 East, Sections 25 and 36; and Township 17 North, Range 20 East, Sections 01 and 02.

The BLM has determined that use of this road system could put firefighters and the public at risk. To provide protection to visitors from the current fire safety hazards, wildfire activity and fire suppression activities along the Cabin Creek Road System the system is closed to use. The BLM will post closure signs where the Cabin Creek Road leaves the community of Elk Bend, Idaho. You may obtain maps of the closed road system and the Salmon Field Office.

DATES: This closure will be in effect from August 18, 2018 until further notice.

FOR FURTHER INFORMATION CONTACT: Linda R Price, Field Office Manager, (208) 756-5410.

DISCUSSION OF THE RULES: Under the Authority of 43 CFR 9212.4 (failure to comply with fire prevention order) BLM will enforce the following rule on the closed public roads:

- You must not enter the closed area

EXEMPTIONS: Persons who are exempt from these rules include:

1. Persons with a permit specifically exempting them from the effect of this Order
2. Any Federal, State, or local officer, or member of an organized rescue or fire fighting force in the performance of an official

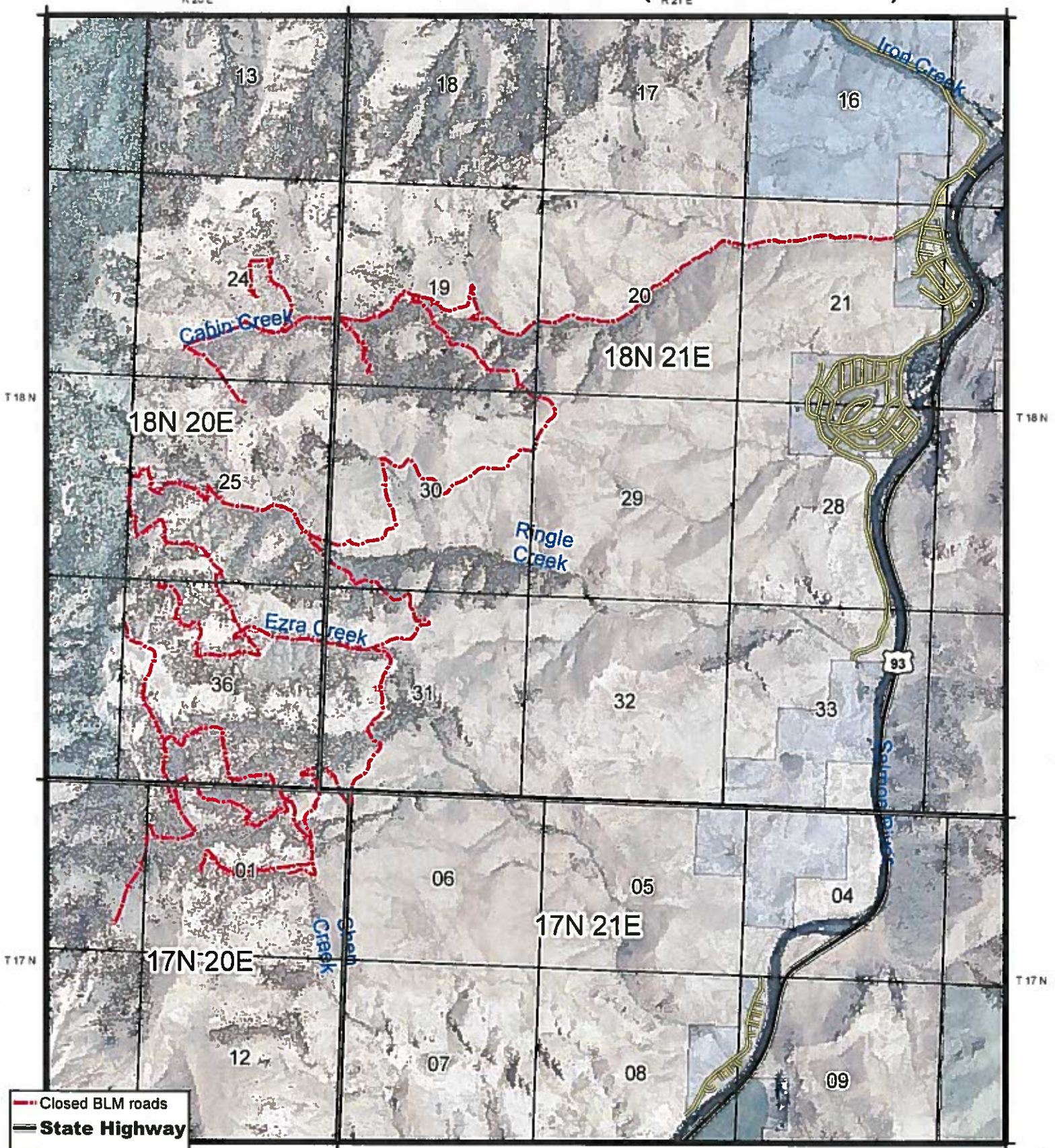
IMPLEMENTATION:

1. This Order will be in effect when signed and shall remain in effect until further notice.
2. A map identifying the area is attached and made part of this Order.
3. Any person who violates the provisions of this order may be tried before a United States Magistrate and fined no more than \$1,000 or imprisoned for no more than 12 months, or both. Such violations may also be subject to enhanced fines provided for by 18 U.S.C. 3571.
4. This Order supersedes any previous orders prohibiting the same acts covered by this Order in the above-described area.

Linda R. Price
Linda R. Price
Field Manager
BLM Salmon Field Office

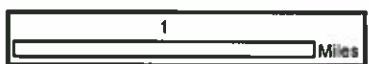
August 17, 2018

Rabbit Foot Road Closure (Salmon BLM)



- - - Closed BLM roads
- State Highway
- County Roads
- BLM
- Private
- State
- USFS

Map created at the Salmon Field Office.
Date: 8/17/2018



No warranty is made by the Bureau of Land Management (BLM). The accuracy, reliability, or completeness of these data for individual use or aggregate use with other data is not guaranteed.

