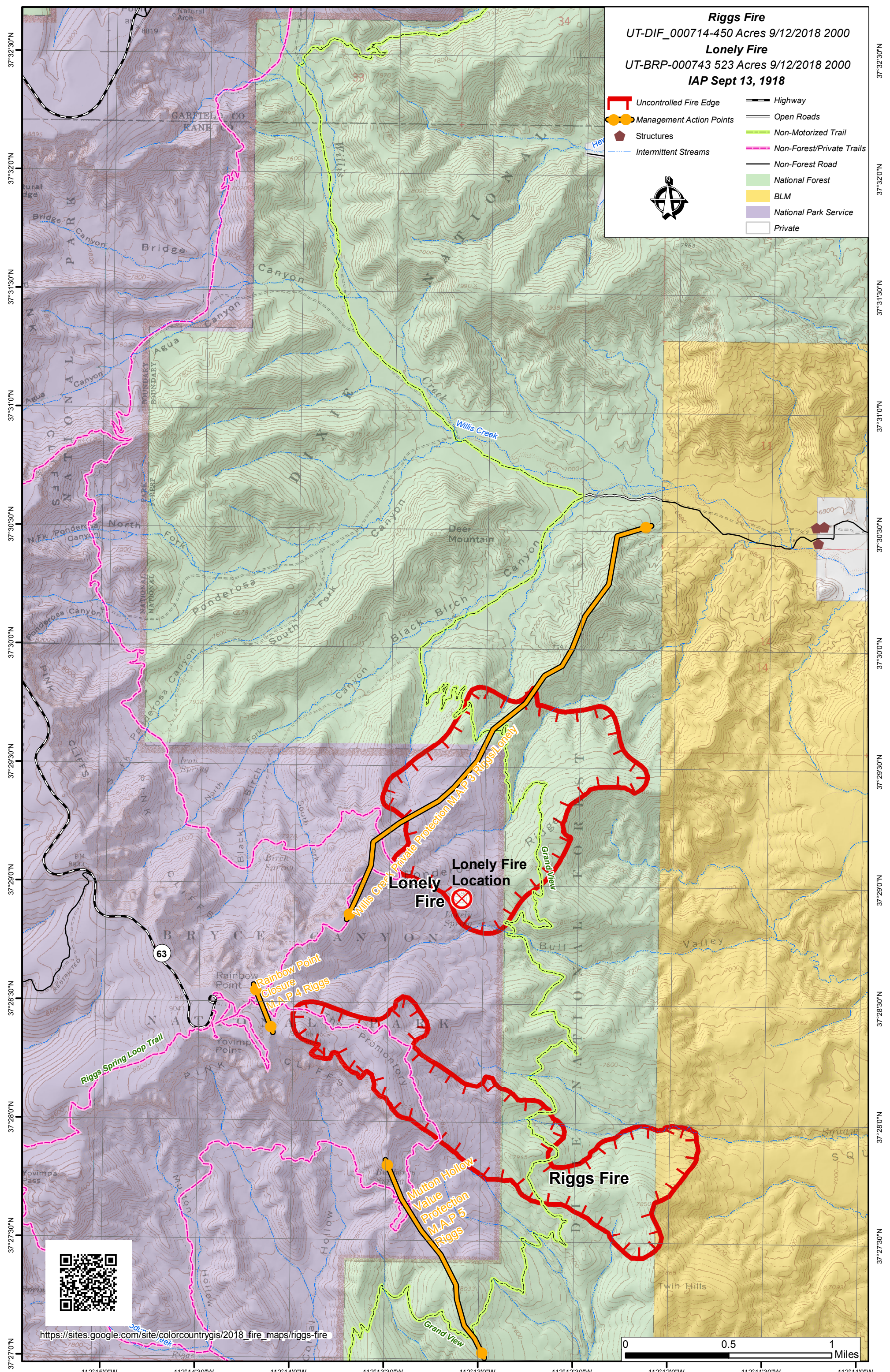


112°15'30"W 112°15'0"W 112°14'30"W 112°14'0"W 112°13'30"W 112°13'0"W 112°12'30"W 112°12'0"W 112°11'30"W



Riggs Fire
UT-DIF_000714-450 Acres 9/12/2018 2000
Lonely Fire
UT-BRP-000743 523 Acres 9/12/2018 2000
IAP Sept 13, 1918

- Uncontrolled Fire Edge
- Management Action Points
- Structures
- Intermittent Streams
- Highway
- Open Roads
- Non-Motorized Trail
- Non-Forest/Private Trails
- Non-Forest Road
- National Forest
- BLM
- National Park Service
- Private



37°32'30"N 37°32'0"N 37°31'30"N 37°31'0"N 37°30'30"N 37°30'0"N 37°29'30"N 37°29'0"N 37°28'30"N 37°28'0"N 37°27'30"N 37°27'0"N

0 0.5 1 Miles



https://sites.google.com/site/colorcountrygis/2018_fire_maps/riggs-fire